



Entrée Gold Inc.

YERINGTON DISTRICT PROPERTIES TOUR

September 27-29, 2011

MINING HISTORY OF THE YERINGTON DISTRICT

Late 1800s – 1930

- Early 1860s – Prospectors discovered oxide copper showings along the Singatse Range. The Ludwig, Bluestone, Nevada Douglas, and Mason Valley Mines produced “bluestone” (chacanthite) from replacement deposits in limestone. The ore was used in the recovery of silver at the Comstock District. Records indicate that less than one million tons of ore was mined before the 1900s.
- 1907 – Empire-Nevada Copper Mines and Smelting Company was formed to develop oxide copper mineralization in igneous rocks at the Empire-Nevada Mine. The property later became the Yerington Mine.
- 1911 – The 41 mile Copper Belt railroad was completed connecting Wabuska (10 miles north of Yerington) to Ludwig.
- 1912 – Mason Valley Mines Company opens the 1,800-ton per day Thompson smelter at Wabuska. The smelter operated until 1930 when it was closed due to low metal prices, causing most of the mines in the area to close. Records show total production was approximately 62 million lbs of Cu at an average grade of 3.5%.
- 1914 – Empire-Nevada conducted the first exploration drilling in the district; the drilling of five holes to a maximum of 700 feet resulted in the discovery of the large, low-grade Yerington porphyry copper deposit.
- 1917 – The Bluestone Mine began shipping ore to the Thompson smelter using the Copper Belt railroad. Over 2 million tons of ore was produced from the Bluestone and Mason Valley mines until closure around 1930.
- 1911-1919 – Mines in the Ludwig area reached their peak during this time period, extracting over 400,000 tons of copper ore.
- 1930 – Most of the properties, including the Empire-Nevada Mine, closed during the Great Depression.

THE ANACONDA PERIOD

- 1941 – The Anaconda Company leased the Empire-Nevada property and undertook an exploration program to determine the size and grade of the copper deposit.
- 1945 – Anaconda completed the purchase of the Empire-Nevada property after determining that there was at least 50 million tons of ore at an average grade of about 1% Cu.
- 1948-1950 – The United States Bureau of Mines discovers the MacArthur oxide copper deposit while conducting a program of trenching and drilling.
- 1952 – Anaconda started producing cement copper from the oxidized portion of the Yerington Mine. Production of sulphide concentrate commenced in 1961.
- 1952-1966 – The Standard Slag Company produced approximately 4 million tons of iron ore from the Minnesota Mine.
- 1960 – U.S. Steel begins exploring the Pumpkin Hollow property, resulting in the discovery of 355 million tons of ore grading 30% Fe and 0.61% Cu.

- 1961-1965 – The Bear porphyry copper deposit (~500 million tons of 0.4% Cu) was discovered through drilling programs conducted by Anaconda and Phelps Dodge.
- 1968 – Anaconda discovers the Ann Mason porphyry copper deposit.
- 1978 – The Yerington Mine closes, having produced 163.4 million tons of oxide and sulphide ore at an average grade of 0.55% Cu.
- 1989 – Arimetco acquired the mineral rights to portions of the Yerington District previously held by Anaconda. Oxide copper ore from the MacArthur deposit was combined with material from the Yerington pit, mine stockpiles and tailings to produce copper using SX/EW methods. The operation was terminated due to low metal prices, leading to the bankruptcy of Arimetco in 1997.
- 2002 – MIM acquires Ann Mason from Arimetco and sells the property to Giralia/PacMag Metals in 2003.

RECENT YEARS

- 2006 – Nevada Copper acquires the Pumpkin Hollow property from a private US entity and begins exploration.
- 2007 – Quaterra acquired Arimetco’s assets and initially explores the MacArthur Mine area. In 2011 Quaterra acquired the old Anaconda operations, and the old Anaconda pit, which has filled with more than 13 billion gallons of water since active mining ceased in the region.
- 2009 – Entrée Gold options the large Blackjack and Roulette properties in the Yerington District.
- 2010 – Entrée Gold gains a 100% interest in the Ann Mason property through the acquisition of PacMag Metals Ltd. and begins drilling to expand the 810 million tonne resource grading 0.4% Cu and explore the Blue Hill oxide copper target. To date, Entrée has completed more than 17,000 metres of drilling has been completed at Ann Mason in addition to the 40,600 metres completed by Anaconda. More than 5,000 metres of drilling has been completed by Entrée at Blue Hill.
- 2011 – Nevada Copper announces an updated resource for Pumpkin Hollow and begins a definitive feasibility study of the property, with 110,600 metres of drilling completed or in progress from 2006 through 2011.
- 2011 – Entrée Gold acquires 100% of the Blackjack property, located northwest of Ann Mason, from Honey Badger Exploration.

REGIONAL DEPOSITS - PAST PRODUCTION AND CURRENT RESOURCES

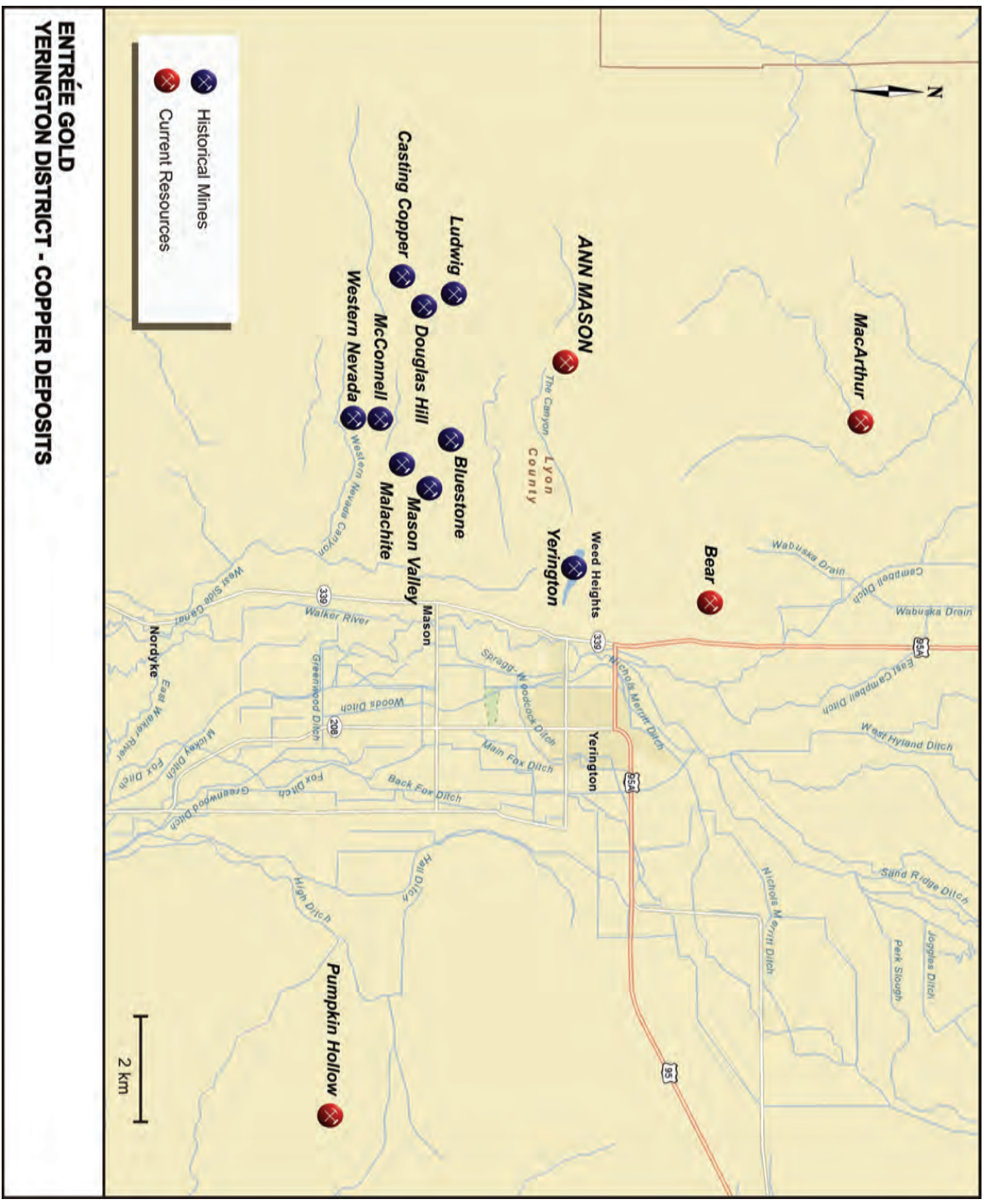
Deposit	Type	Years of Production	Past Production & Current Resources (short tons)	Copper (%)	Resource Type	Mineralization
Ann Mason	Porphyry Copper	-	893,000,000 (810,400,000 metric tonnes)	0.40	Inferred	Sulphide (@0.30% cut-off Cu)
Bear	Porphyry Copper	-	500,000,000	0.40	Inferred	Sulphide (@0.30% cut-off Cu)
MacArthur	Porphyry Copper	-	143,721,000 215,043,000 39,476,000	0.19 0.20 0.33	Measured and Indicated Inferred Inferred	Oxide (@0.12% cutoff Cu) Oxide (@0.12% cutoff Cu) Sulphide (@0.20% cutoff Cu)
Pumpkin Hollow	Skarn	-	352,828,000 228,707,000	0.71 0.52	Measured and Indicated Inferred	Sulphide (@0.30% cutoff Cu)
Yerington	Porphyry Copper	1952 – 1978	162,400,000 120,600,000	0.55 0.35	Past Production Historic Resources	Oxide & sulphide (@ 0.20% cut-off Cu)
Bluestone	Skarn	1917 - 1930	1,500,000	~1.5 - 3.5	Past Production	Sulphide
Casting Copper	Skarn	1912 - ?	450,000	~3	Past Production	Oxide and sulphide
Douglas Hill	Skarn	1911 - 1914?	70,000	~5	Past Production	Oxide and sulphide
Ludwig Mine	Skarn	1912 - 1914?	200,000	~2.6	Past Production	Oxide and sulphide
Mason Valley	Skarn	1912 - 1930; 1945	1,500,000	~1.5 - 3.5	Past Production	Sulphide
McConnell	Skarn	1912 - 1914; 1945	20,000	~3	Past Production	Oxide and sulphide
Western Nevada	Skarn	1944 - 1945	4,000	~3	Past Production	Oxide and sulphide

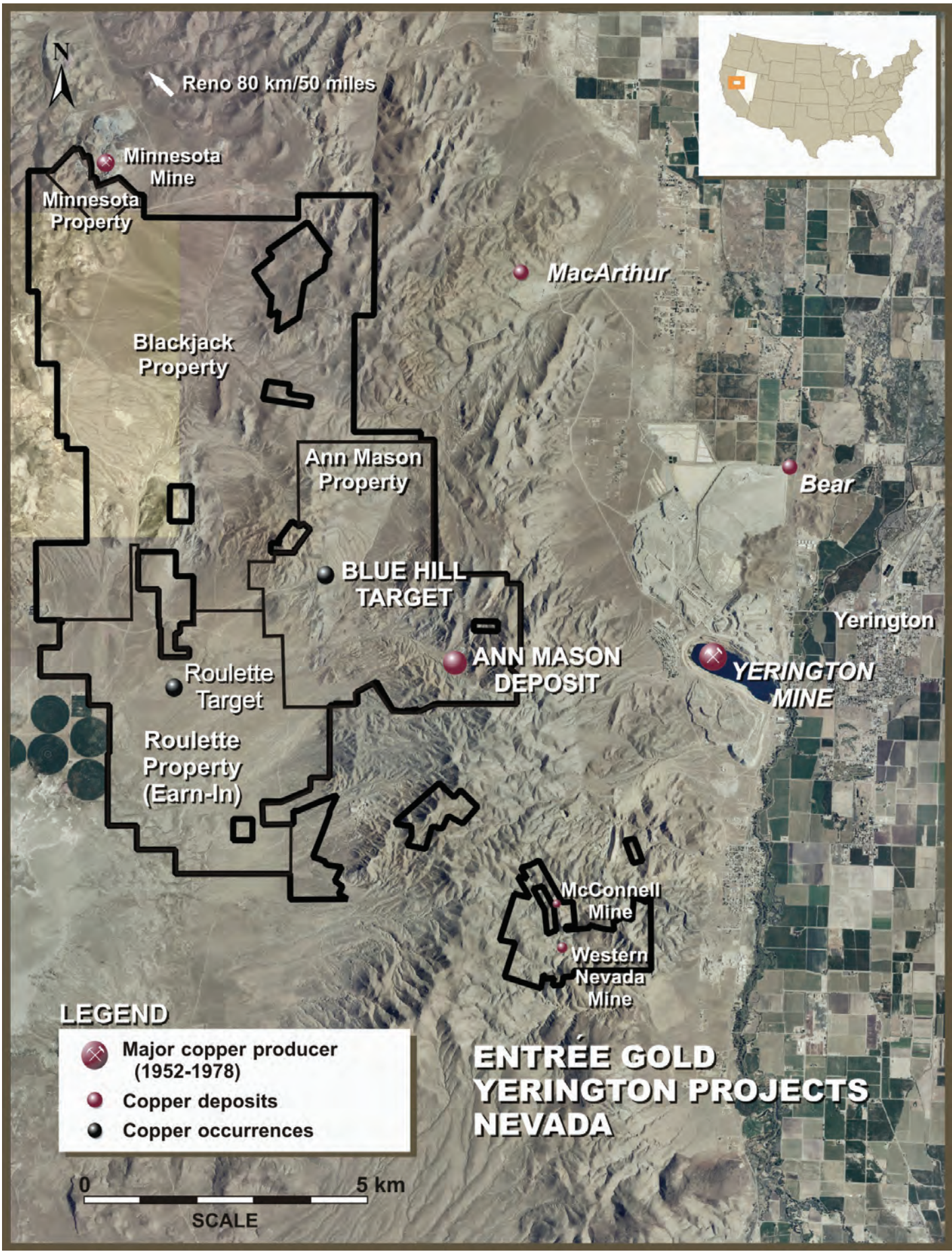
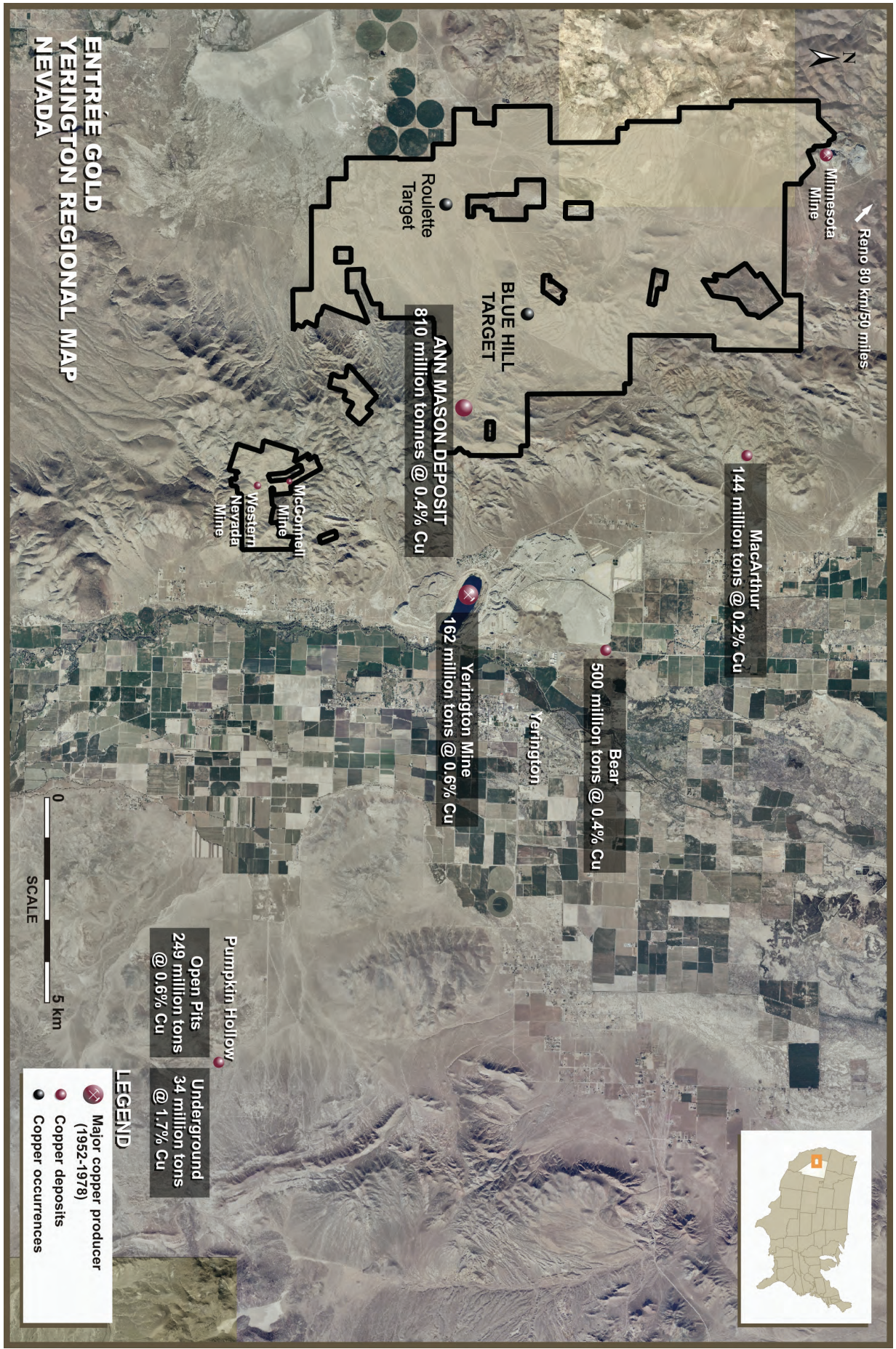
Resources

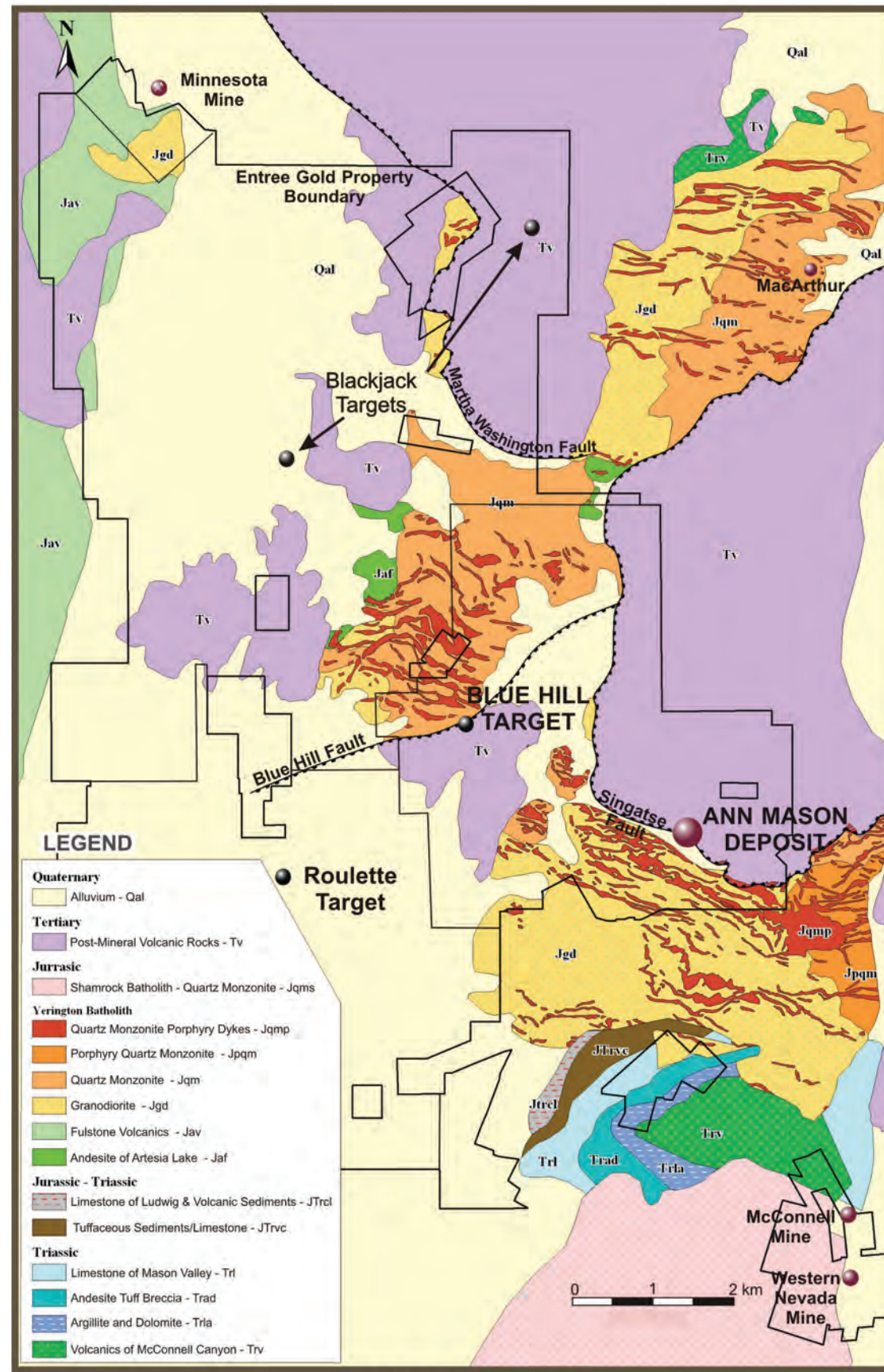
Past Production

ENTRÉE GOLD YERINGTON OVERVIEW

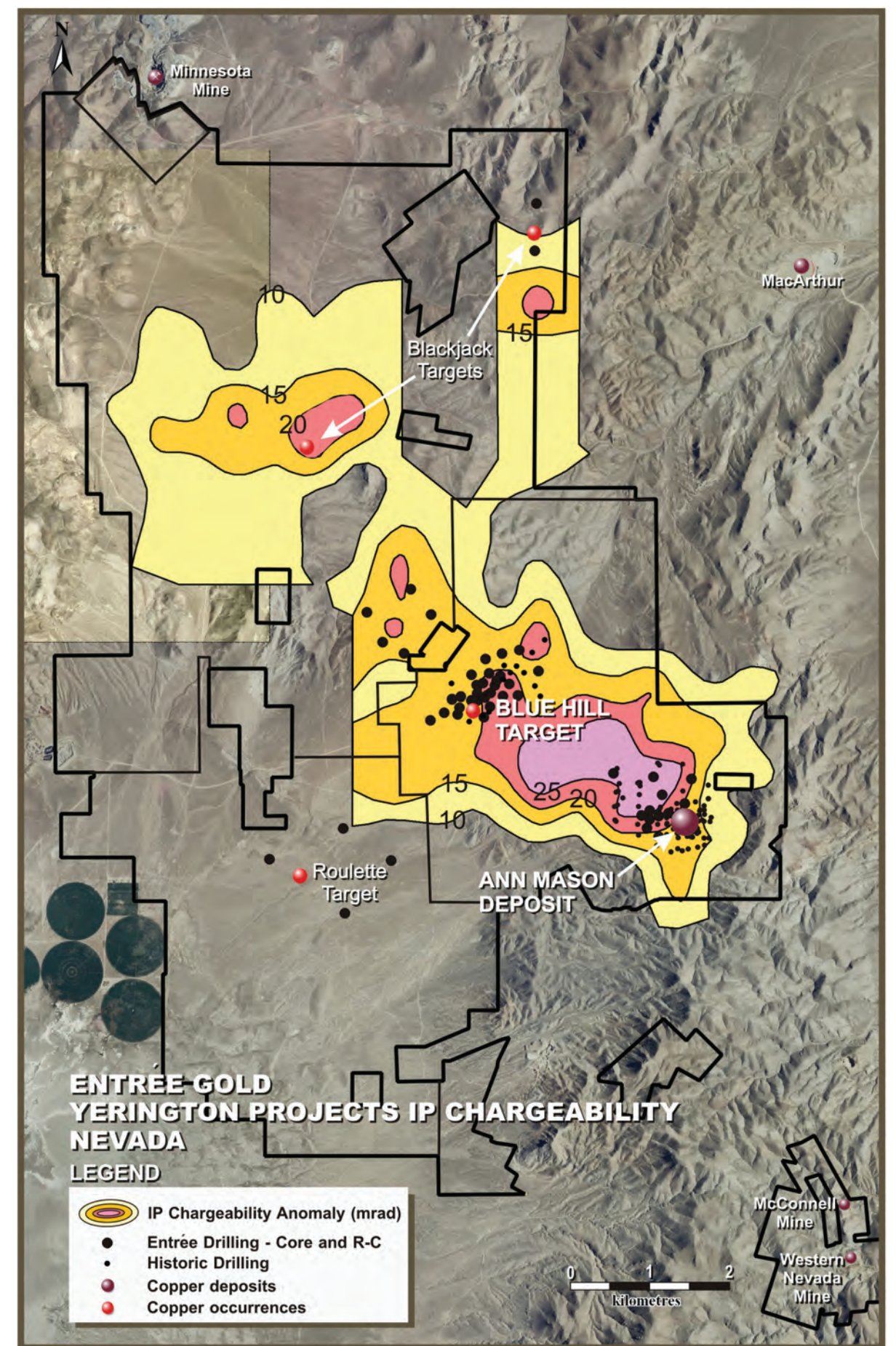
REGIONAL DEPOSITS AND HISTORIC MINES



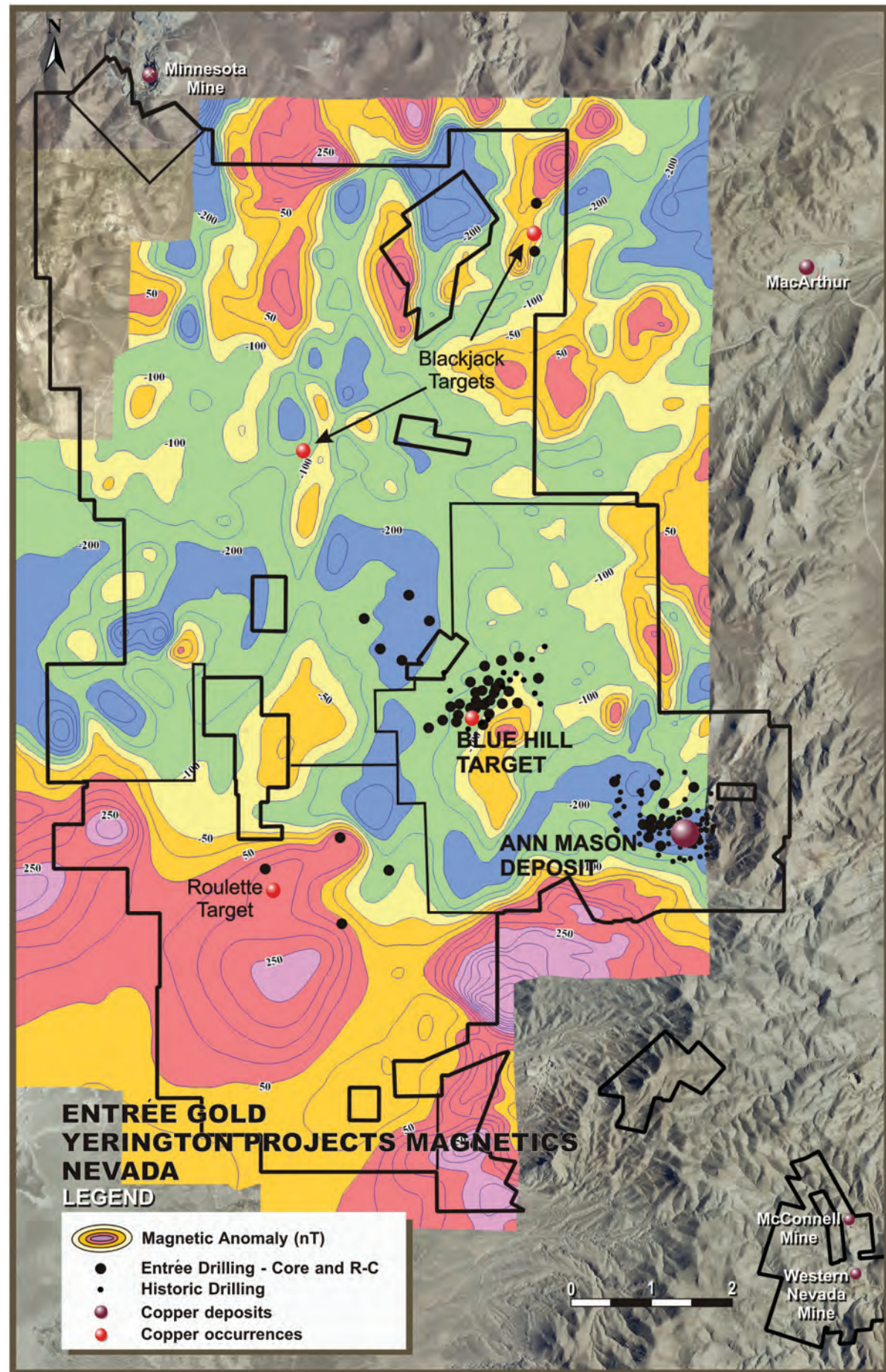




ENTRÉE GOLD REGIONAL GEOLOGY YERINGTON PROJECTS, NEVADA

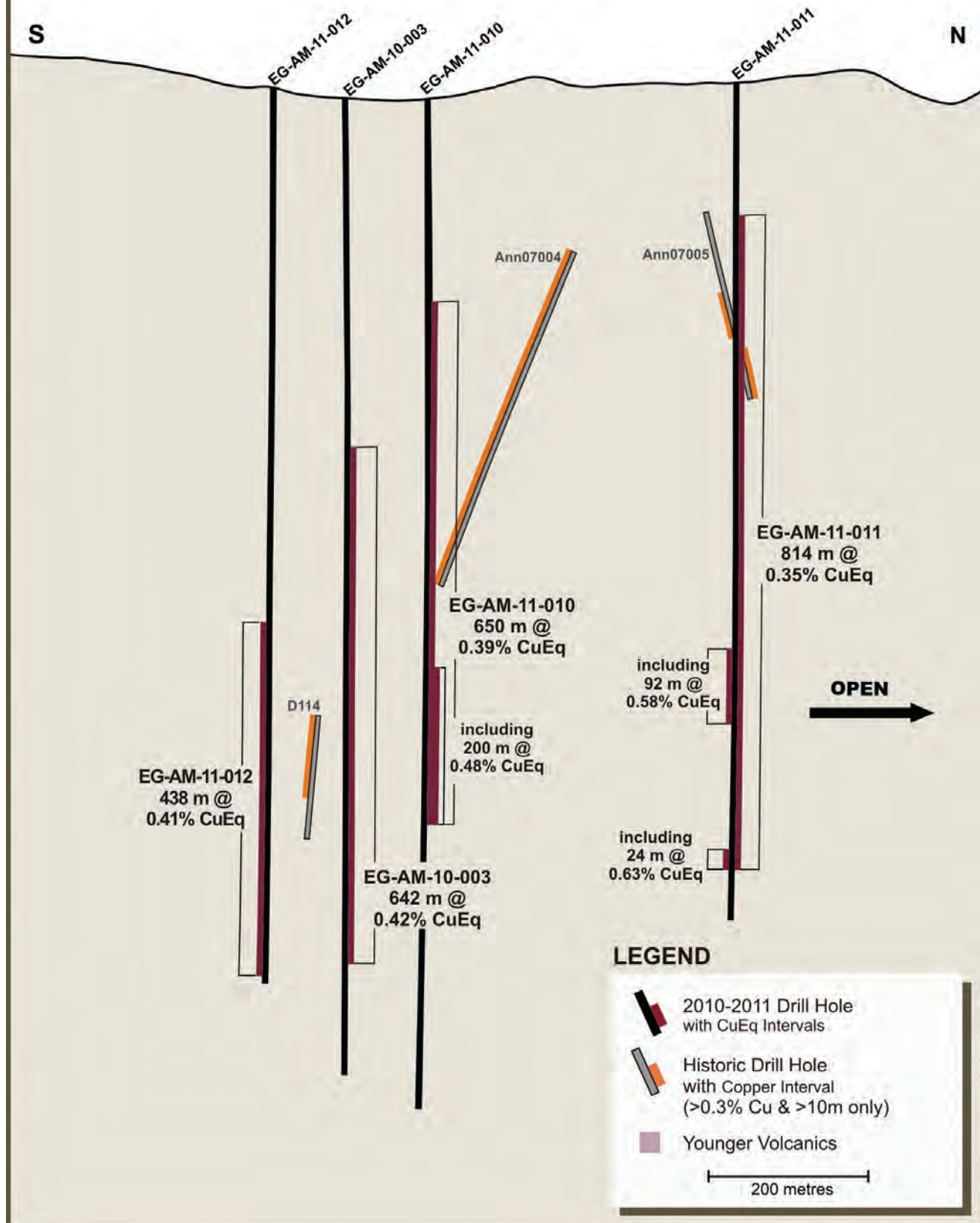


ENTRÉE GOLD YERINGTON PROJECTS IP CHARGEABILITY NEVADA

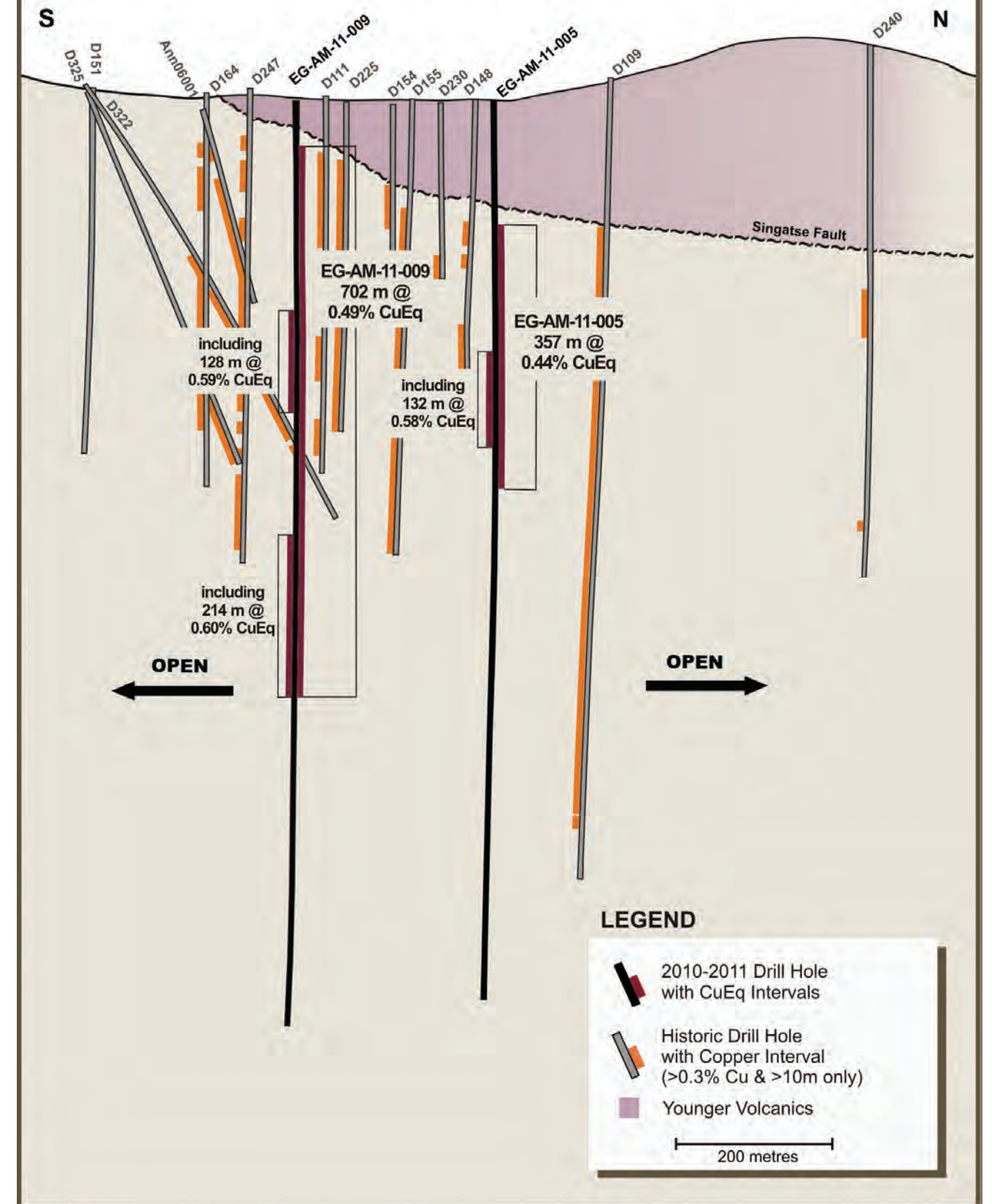


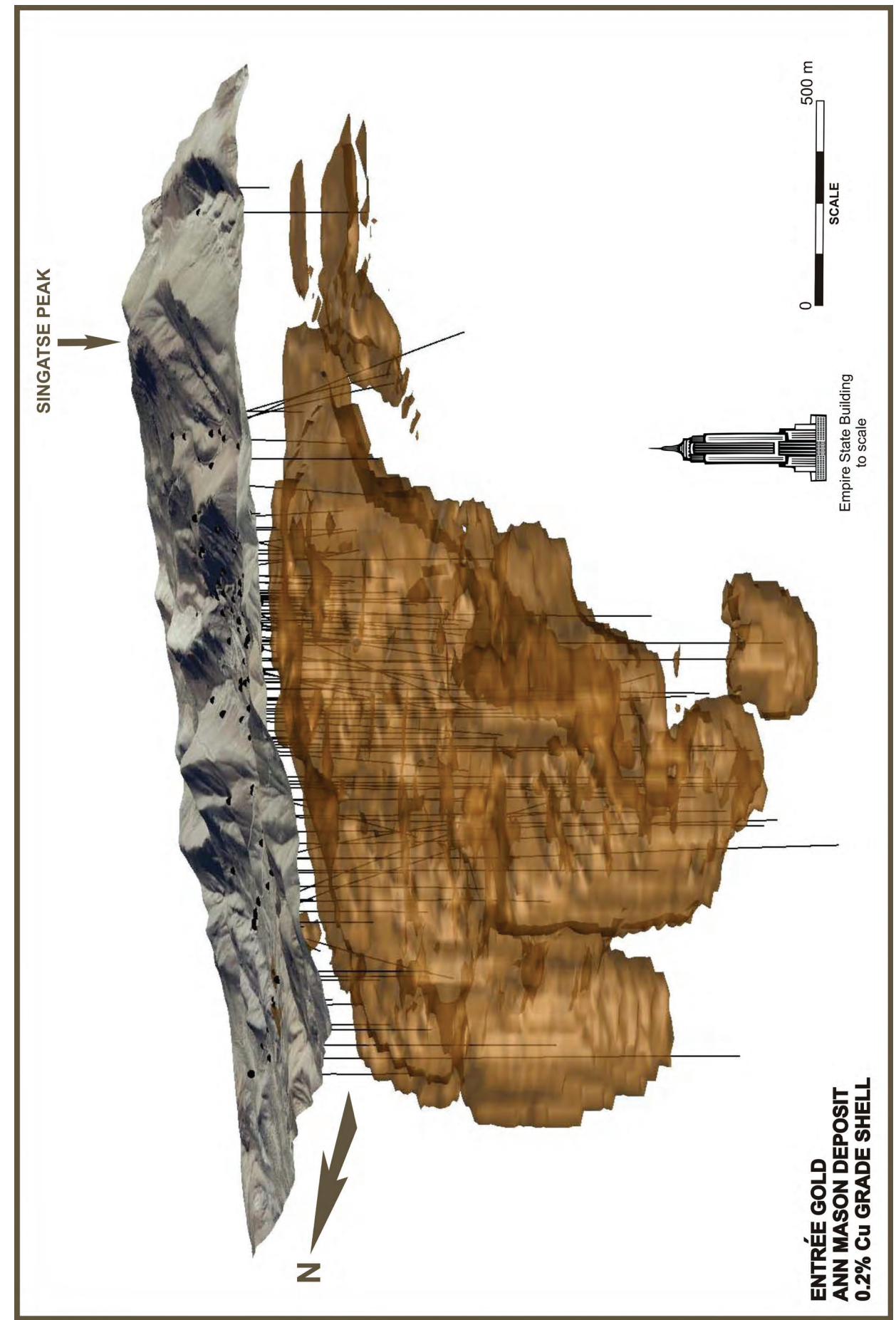
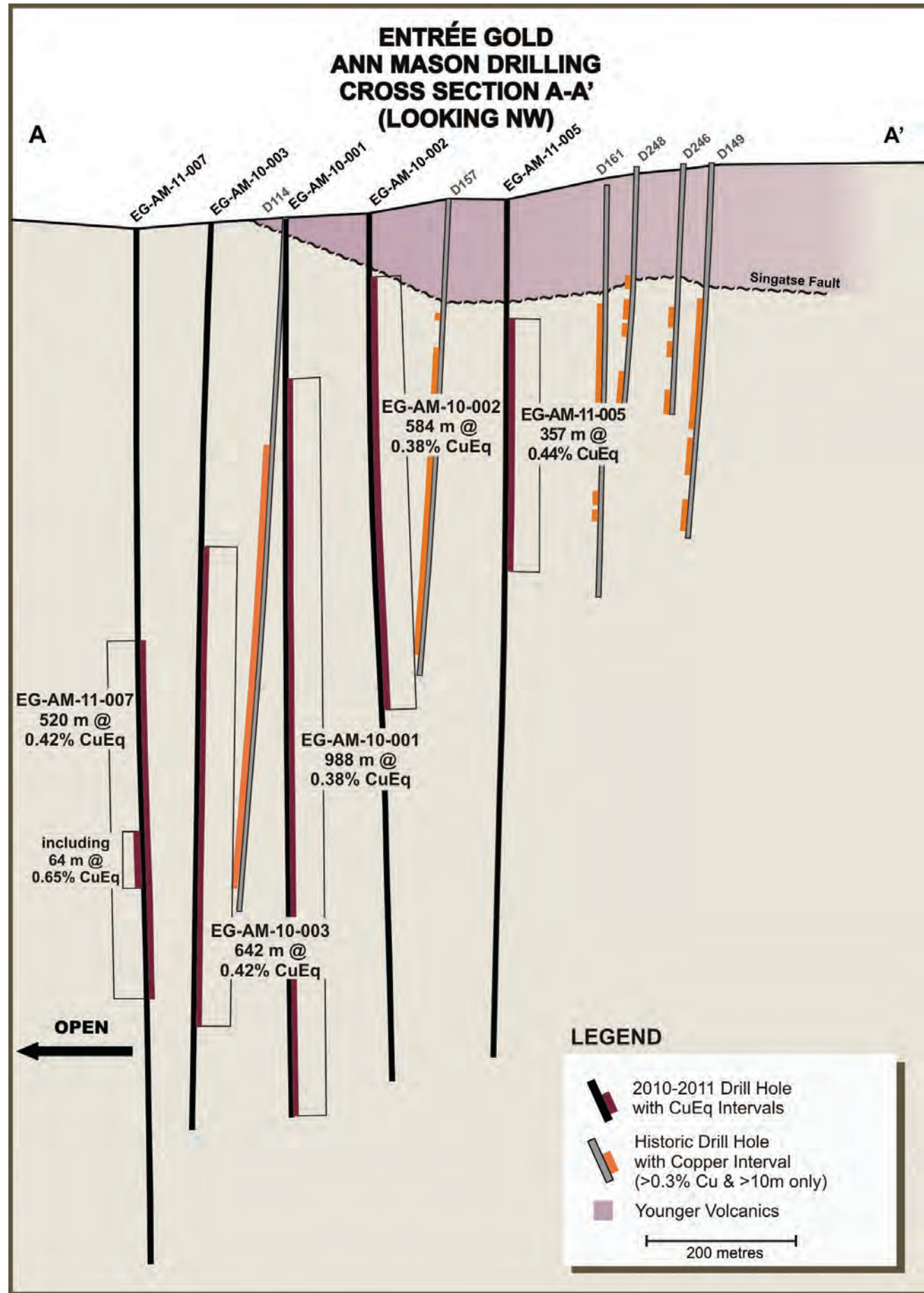
ANN MASON

**ENTRÉE GOLD
ANN MASON DRILLING
CROSS SECTION 304,300E**



**ENTRÉE GOLD
ANN MASON DRILLING
CROSS SECTION 304,700E**

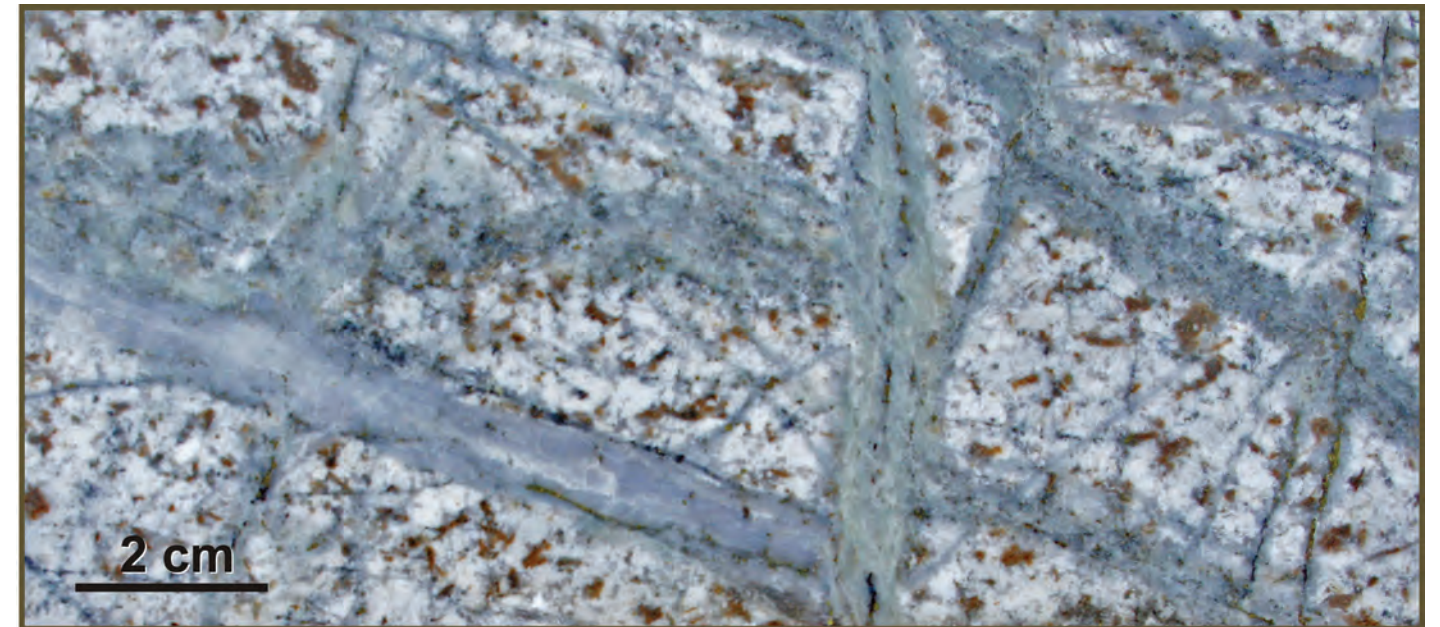




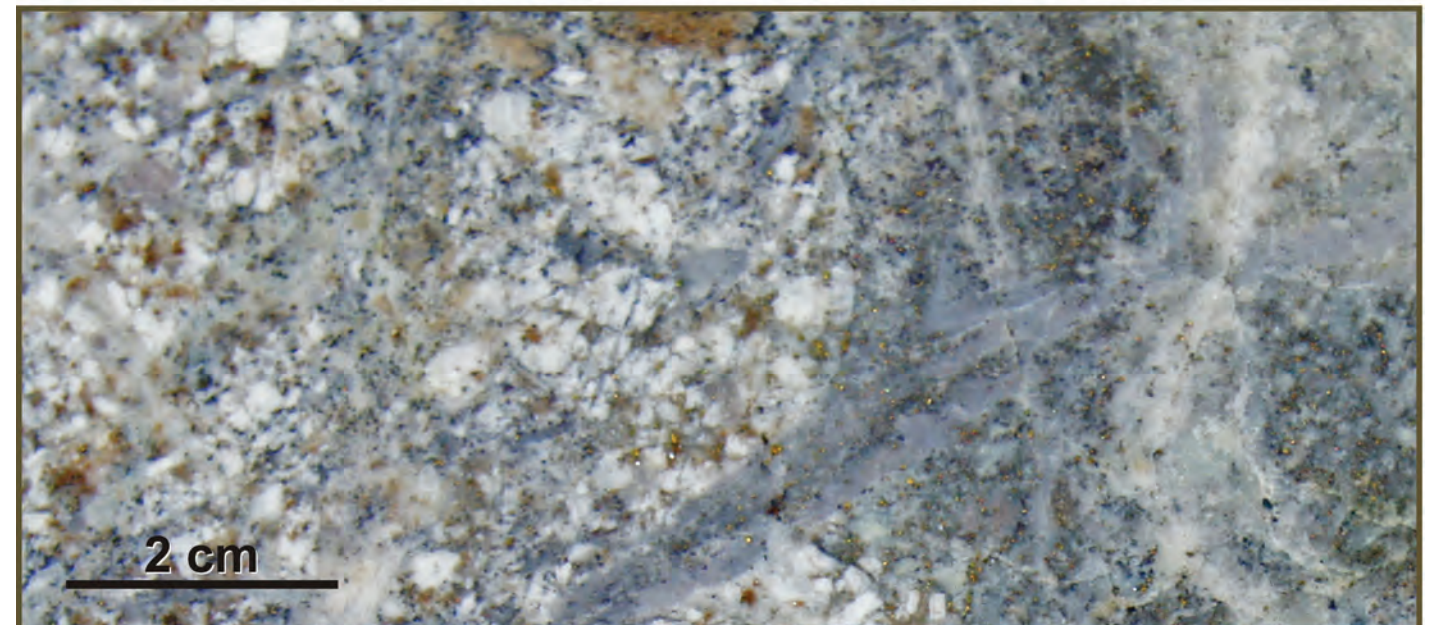
**ANN MASON DEPOSIT: SIGNIFICANT DRILL INTERCEPTS
REPORTED TO DATE**

	From (m)	To (m)	Length (m)	Cu %	Au g/t	Ag g/t	Mo %	CuEq* %
EG-AM-10-001	214	1202	988	0.31	0.04	0.76	0.010	0.38
Including	472	812	340	0.40	0.06	1.10	0.016	0.51
Including	608	646	38	0.60	0.12	2.09	0.018	0.75
EG-AM-10-002	86	670	584	0.34	0.03	0.79	0.006	0.38
EG-AM-10-003	436	1078	642	0.35	0.03	0.65	0.012	0.42
Including	714	838	124	0.58	0.06	1.32	0.021	0.71
EG-AM-10-004	62	780	718	0.31	0.03	0.64	0.012	0.38
Including	492	570	78	0.37	0.07	1.23	0.021	0.50
EG-AM-11-005	139	496	357	0.39	0.05	1.01	0.004	0.44
Including	318	450	132	0.52	0.09	1.66	0.002	0.58
EG-AM-11-007	552	1072	520	0.37	0.02	0.55	0.009	0.42
Including	818	882	64	0.55	0.04	0.99	0.016	0.65
EG-AM-11-008	240	688	448	0.39	0.05	0.80	0.003	0.43
	722	788	66	0.39	0.06	0.91	0.004	0.35
	830	858	28	0.53	0.12	2.09	0.014	0.66
EG-AM-11-009	66	768	702	0.41	0.03	0.96	0.011	0.49
Including	268	396	128	0.52	0.02	0.74	0.012	0.59
And	554	768	214	0.48	0.07	1.92	0.017	0.60
EG-AM-11-010	252	902	650	0.33	0.03	0.71	0.010	0.39
Including	702	902	200	0.40	0.05	1.21	0.012	0.48
EG-AM-11-011	166	980	814	0.28	0.02	0.51	0.012	0.35
Including	706	798	92	0.48	0.07	1.58	0.015	0.58
And	956	980	24	0.48	0.10	1.58	0.021	0.63
EG-AM-11-012	658	1096	438	0.38	0.01	0.46	0.004	0.41
Including	696	910	214	0.47	0.01	0.58	0.005	0.50
EG-AM-11-013	80	764	684	0.34	0.04	0.88	0.016	0.43
Including	290	558	268	0.41	0.05	1.24	0.023	0.54
And	680	764	84	0.40	0.09	1.69	0.012	0.50

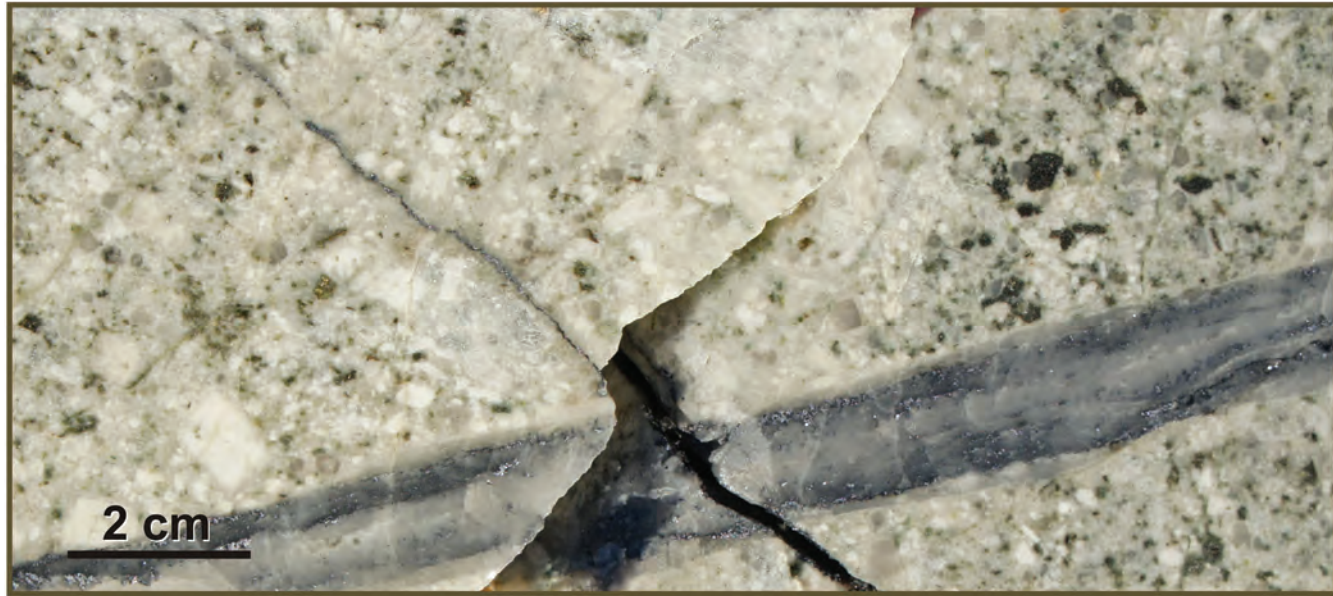
*Copper equivalent is calculated using assumed metal prices of: copper US\$2.50/lb; molybdenum US\$15.00/lb; gold US\$1000/oz; and silver US\$15.00/oz and assumed recoveries relative to copper of: molybdenum 70%; gold 85%; and silver 85%.



Ann Mason drill core sample from hole EG-AM-10-003 at 760 metres depth.
2:1 ratio of chalcopyrite (yellow) to bornite (deep blue-purple), with trace molybdenite, contained in stockwork quartz sericite veins and fractures. Stockwork is hosted by weakly albitized B-Type quartz monzonite porphyry dyke that has undergone potassic alteration with secondary biotite (brown).
0.79% total Cu

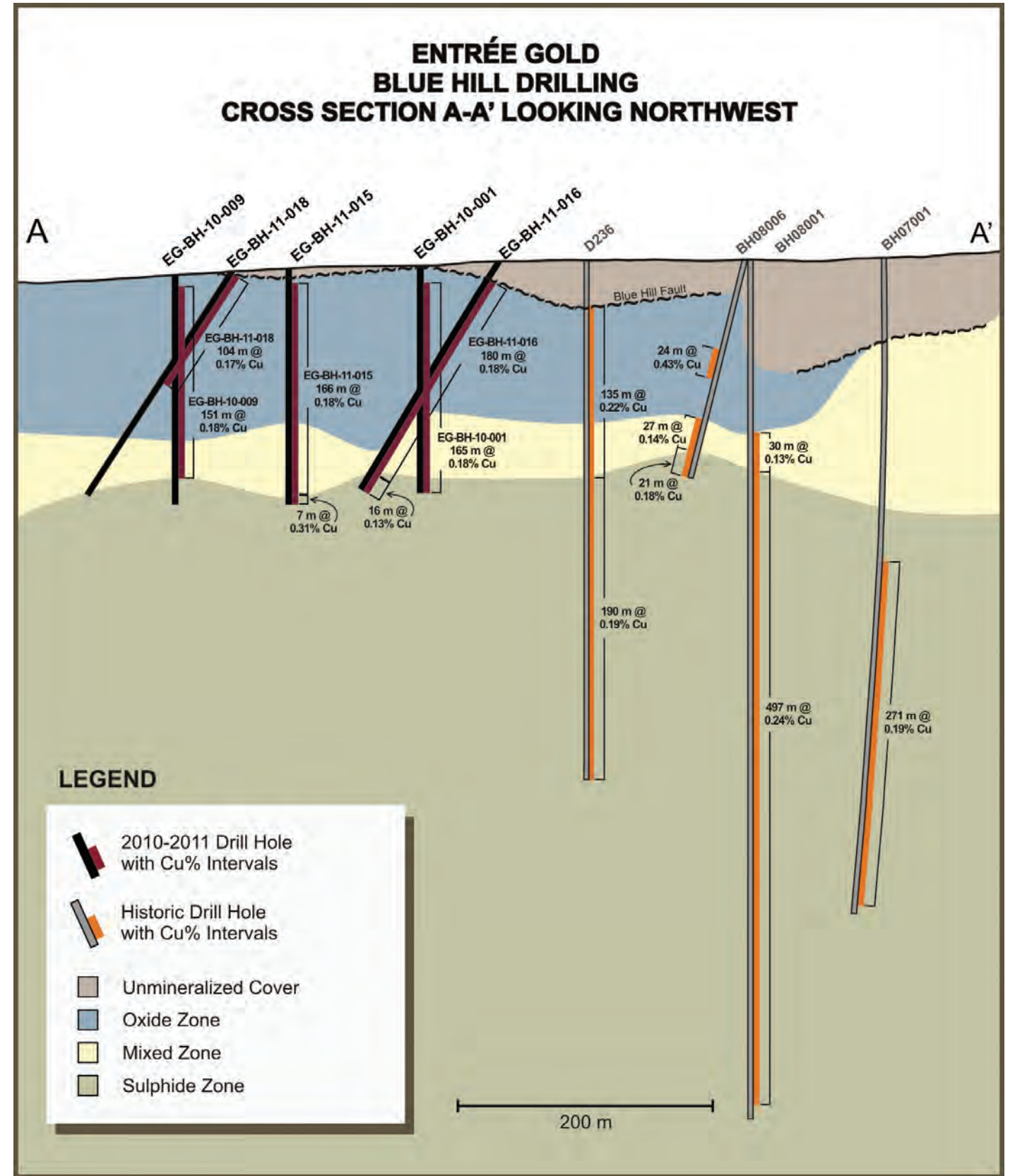
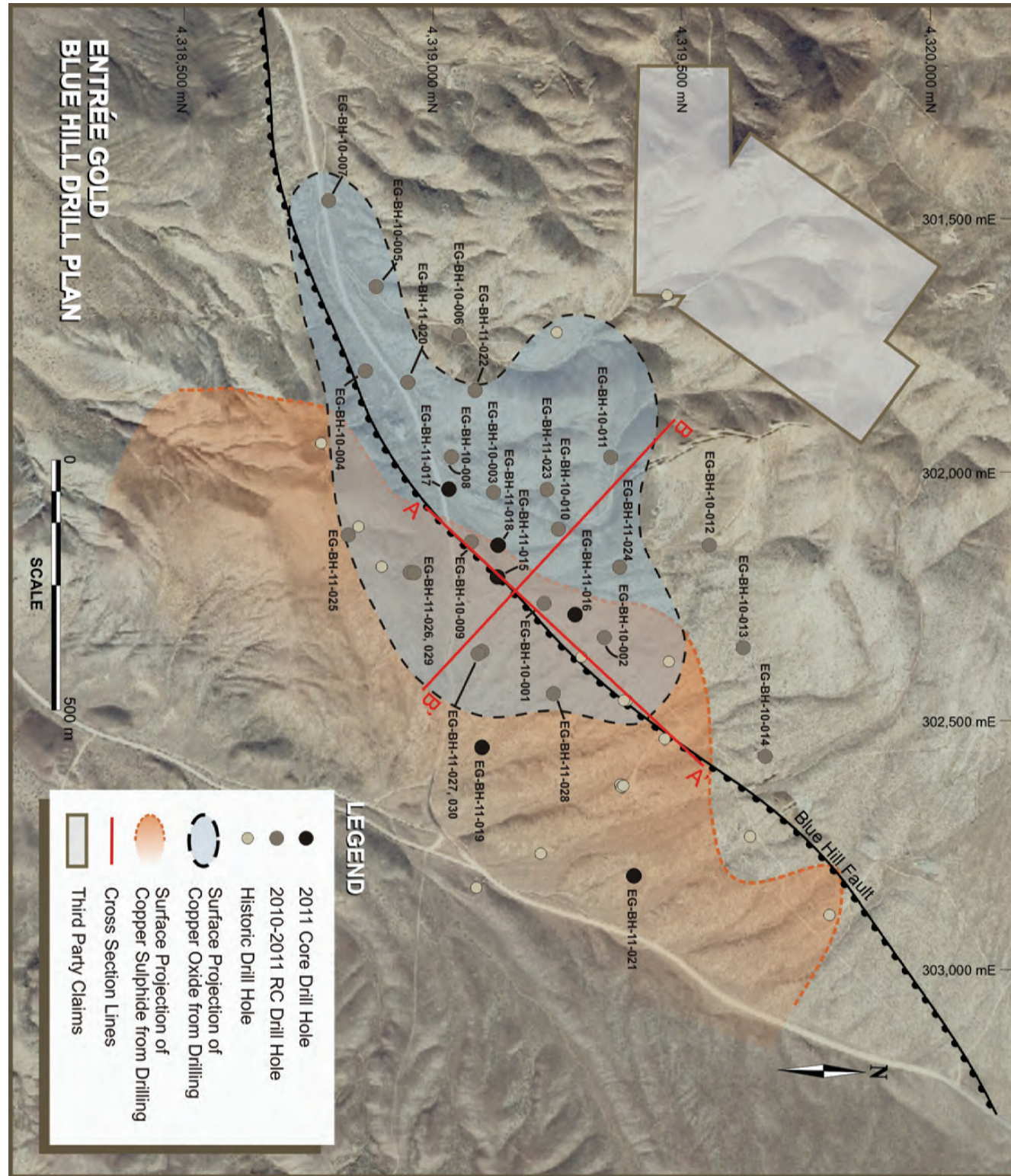


Ann Mason drill core sample from hole EG-AM-10-003 at 816 metres depth.
1:1 ratio of chalcopyrite (yellow) to bornite (deep blue-purple) contained in stockwork quartz sericite veins and fractures. Stockwork is hosted by weakly albitized A-Type quartz monzonite porphyry dyke that has undergone potassic alteration with secondary biotite (brown).
1.225% total Cu

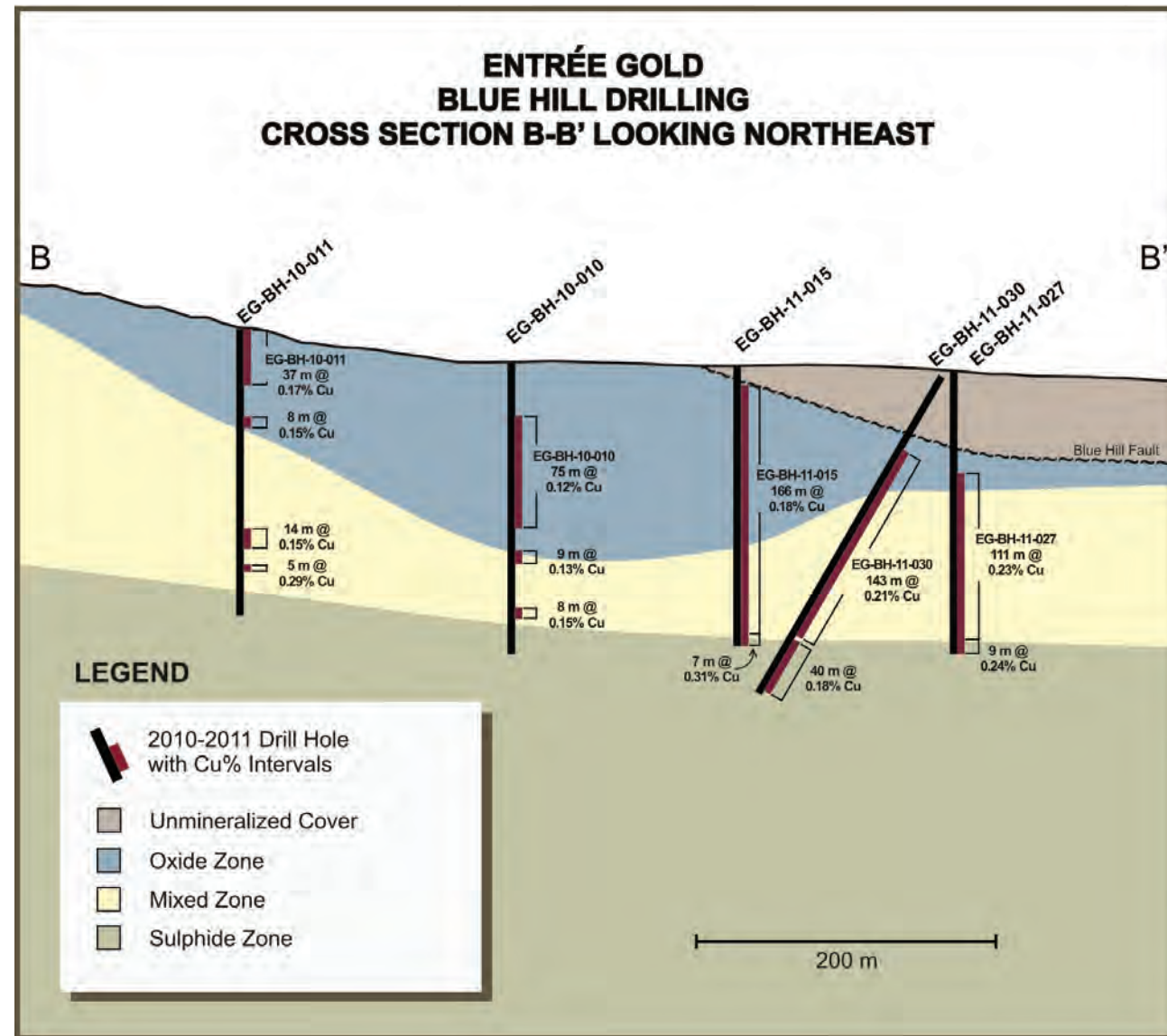


Ann Mason drill core sample from hole EG-AM-10-002 at 1120 metres depth.
Albitized B-Type quartz monzonite porphyry dyke cut by a 1.2cm wide quartz-molybdenite vein.
0.191% Mo

BLUE HILL



BLUE HILL TARGET: SIGNIFICANT DRILL INTERCEPTS REPORTED TO DATE



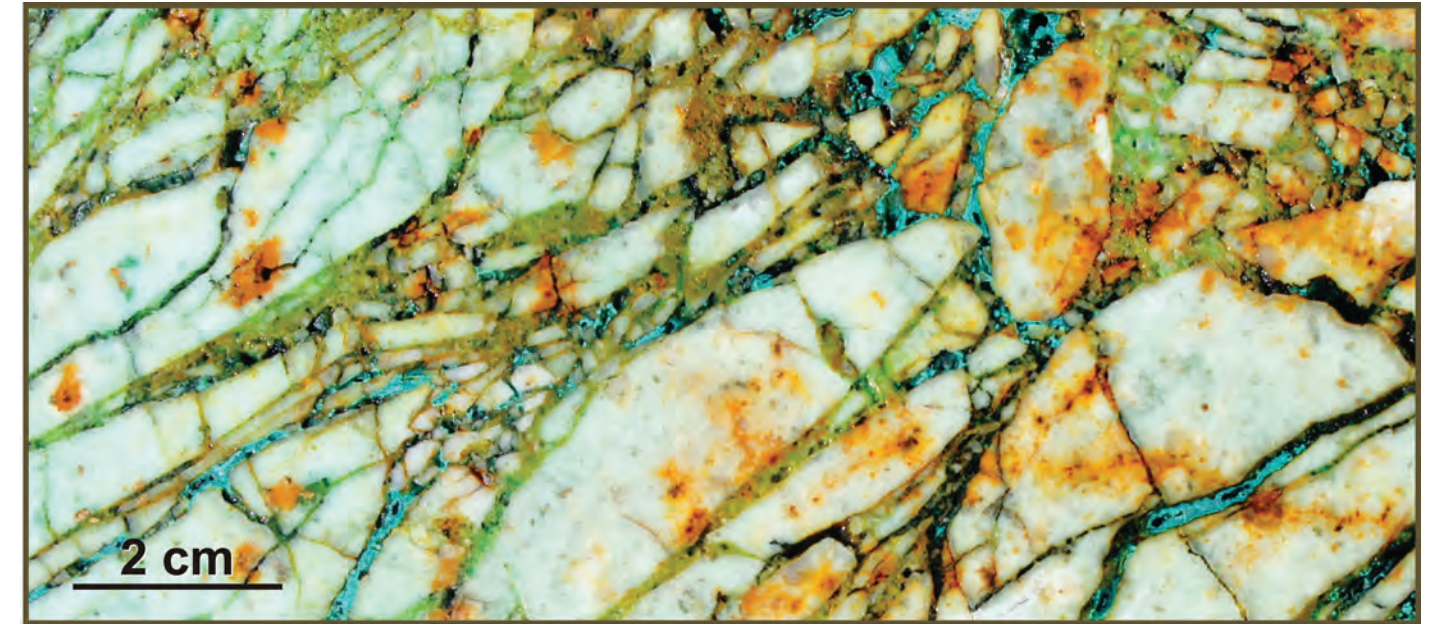
HOLE NUMBER	From (m)	To (m)	Width (m)	Cu (%)	Mo (ppm)	Comment	Hole Type
EG-BH-10-001*	18.29	182.88	164.59	0.18		Oxide/Mixed/Sulphide	RC
Including	18.29	44.20	25.91	0.26		Oxide	
And	59.44	99.06	39.62	0.21		Oxide	
And	105.16	109.73	4.57	0.31		Oxide	
And	164.59	172.21	7.62	0.38		Mixed	
EG-BH-10-002	39.62	51.82	12.20	0.23		Oxide	RC
Including	45.72	51.82	6.10	0.34		Oxide	
	74.68	147.83	73.15	0.15		Oxide/Mixed/Sulphide	
And	126.49	147.83	21.34	0.19		Mixed/Sulphide	
EG-BH-10-003*	7.62	68.58	60.96	0.19		Oxide	RC
Including	56.39	64.01	7.62	0.38		Oxide	
	129.54	156.97	27.43	0.28		Mixed/Sulphide	
	176.78	184.40	7.62	0.13		Sulphide	
EG-BH-10-004*	88.39	121.92	33.53	0.17		Mixed	RC
EG-BH-10-005*	85.34	106.68	21.34	0.40	140	Mixed	RC
Including	92.96	106.68	13.72	0.48	176	Mixed	RC
EG-BH-10-008	12.19	105.16	92.97	0.15		Oxide	RC
Including	12.19	32.00	19.81	0.30		Oxide	RC
EG-BH-10-009	12.19	163.07	150.88	0.18		Oxide/Mixed	RC
Including	12.19	39.62	27.43	0.36		Oxide	
And	111.25	118.87	7.62	0.15	191	Oxide	
EG-BH-10-010	44.20	118.87	74.67	0.12		Oxide	RC
Including	44.20	54.86	10.66	0.15		Oxide	
	134.11	143.26	9.15	0.13		Mixed	
	172.21	179.83	7.62	0.15		Mixed	
EG-BH-10-011	0.00	36.58	36.58	0.17		Oxide	RC
	57.91	65.53	7.62	0.15		Oxide	
	132.59	146.3	13.71	0.15		Mixed	
	132.59	161.54	4.57	0.29		Mixed	
EG-BH-11-015*	132.59	184.00	166.00	0.18		Oxide/Mixed	Diamond
	184.00	191.26	7.26	0.31		Mixed/Sulphide	
EG-BH-11-016*	18.00	198.00	180.00	0.18		Oxide/Mixed	Diamond
	198.00	214.28	16.28	0.13		Sulphide	
EG-BH-11-017	8.00	144.00	136.00	0.16		Oxide/Mixed	Diamond
Including	8.00	78.00	70.00	0.21		Oxide	
And	106.00	144.00	38.00	0.15		Mixed	
EG-BH-11-018	4.00	108.00	104.00	0.17		Oxide	Diamond
Including	4.00	82.00	78.00	0.19		Oxide	

* Drill holes ending in copper mineralization

**BLUE HILL TARGET: SIGNIFICANT DRILL INTERCEPTS
REPORTED TO DATE** (continued)

HOLE NUMBER	From (m)	To (m)	Width (m)	Cu (%)	Mo (ppm)	Comment	Hole Type
EG-BH-11-020	51.82	57.91	6.09	0.17		Oxide	RC
EG-BH-11-022	45.72	67.06	21.34	0.26		Oxide	RC
EG-BH-11-023	10.67	59.44	48.77	0.16		Oxide	RC
	126.49	147.83	21.34	0.14		Mixed	
EG-BH-11-024	105.16	128.02	22.86	0.16		Mixed	RC
	199.65	205.74	6.09	0.17		Mixed	
EG-BH-11-025	134.11	138.69	4.58	0.17		Sulphide	RC
EG-BH-11-026	67.06	152.40	85.34	0.21		Oxide/Mixed	RC
EG-BH-11-027*	68.58	179.83	111.25	0.23		Oxide/Mixed	RC
	179.83	188.98	9.15	0.24		Sulphide	
EG-BH-11-029	57.91	179.83	121.92	0.19		Oxide/Mixed	RC
Including	57.91	117.35	59.44	0.27		Oxide	
	179.83	207.27	27.44	0.23		Mixed/Sulphide	
EG-BH-11-030	54.86	198.12	143.26	0.21		Oxide/Mixed	RC
Including	54.86	135.64	80.78	0.25		Oxide/Mixed	
	201.17	240.79	39.62	0.18		Sulphide	

* Drill holes ending in copper mineralization



Blue Hill drill core sample from hole EG-BH-11-017 at 28 metres depth.
Brecciated B-type quartz monzonite porphyry dyke. Veinlets and fractures abundant in malachite, epidote and blue-green copper sulphate.
1.305% total Cu (1.355% soluble Cu)



Blue Hill drill core sample from hole EG-BH-11-015 at 58 metres depth.
Green copper sulfate with flecks of black copper oxide coating a fracture surface of a B-type quartz monzonite porphyry dyke
0.125% total Cu (0.116% soluble Cu)

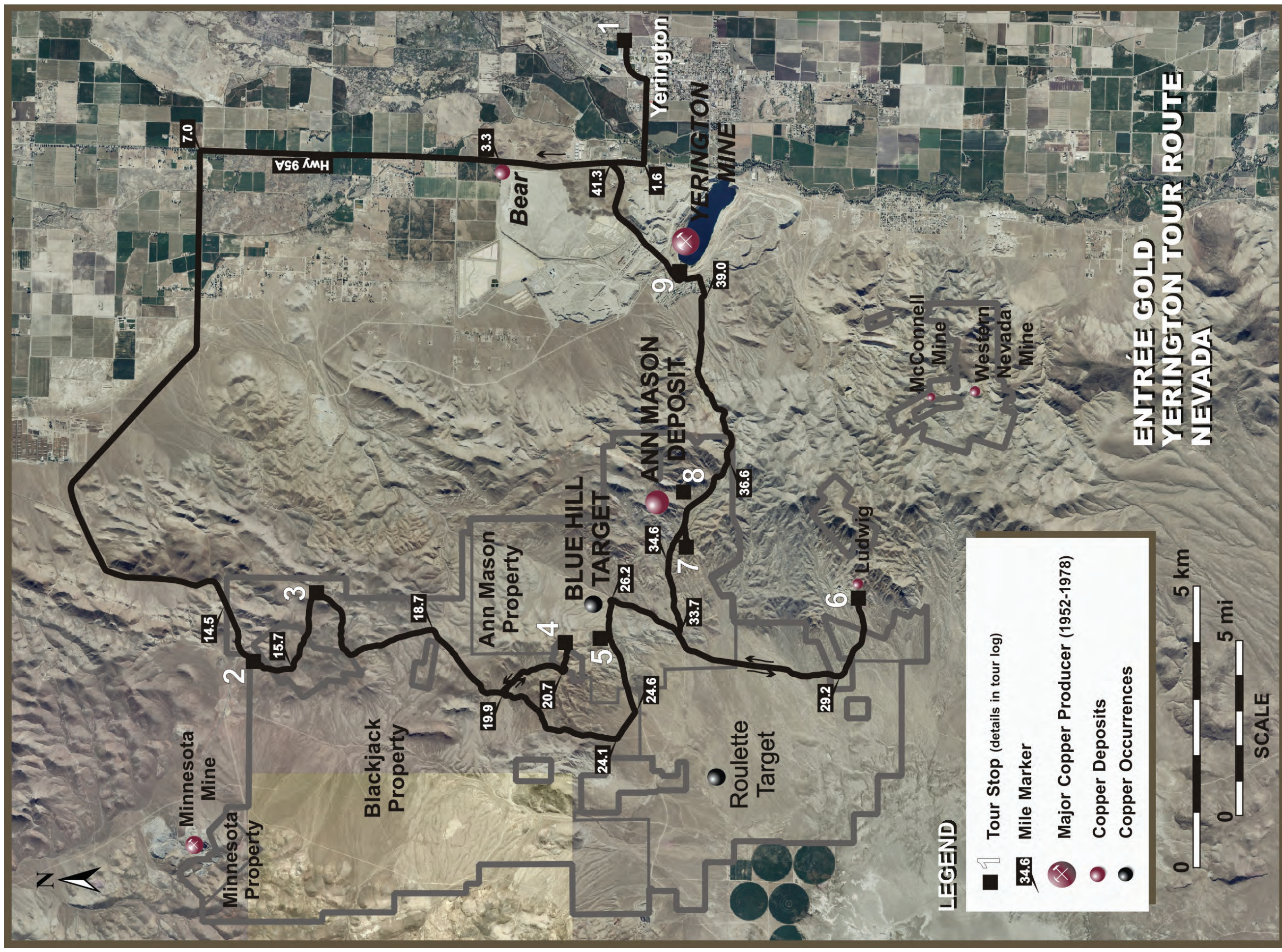
PROPERTY TOUR
ROAD LOG & STOP DESCRIPTIONS

**ENTRÉE GOLD ANALYST TOUR
SEPTEMBER 2011 - TOUR LOG**

Map Number	Mileage	Description
1	0.0	Entrée Gold Office and Core Facility; Exit parking lot; Turn right onto Hwy 95A.
	0.6	Turn right onto Goldfield Avenue.
	1.6	Turn right (north) onto Hwy 95A.
	3.3	Bear porphyry copper deposit in sub-surface; 500 million ton resource grading 0.4% Cu
	7.0	Turn left (west) onto Campbell Lane.
	14.5	Entering the northeast corner of the Entrée claim block.
	14.9	Stay left onto two-track road.
2	15.3	View of the Minnesota Mine 2.3 mi (3.7 km) to the west-northwest. Located at the northwest corner of the Entrée property; initially a copper prospect, the Standard Slag Company produced 4 million tons of iron ore from 1952 to 1966.
	15.7	Stay left onto two-track road.
	16.0	Stay left onto two-track road.
3	16.6	Blackjack hole EG-B-10-001 drilled into granodiorite and quartz monzonite porphyry of the Yerington Batholith at 390 m with disseminated pyrite and minor chalcopyrite with local sheared qtz-chalcopyrite veins, confirming sulphide mineralization as the source of the northern IP anomaly (see property IP map).
	18.7	Crossing Martha Washington Fault separating post-mineral volcanic rocks on the north from outcrops of Yerington Batholith to the south; oxide Cu mineralization in rocks of the Yerington Batholith.
	19.9	Stay left onto two-track road.
	20.6	Blackjack drill hole EG-B-010-004; minor oxide Cu mineralization is present from surface to a depth of 128 m; sulphide mineralization is primarily pyrite with minor chalcopyrite and trace bornite; 20 m of 0.2% Cu from 136 m - 156 m.
	20.7	Stay left onto two-track road.
	20.8	Turn left and continue up the hill on two-track road.
4	21.2	Blue Hill Target Overlook - drill pads visible at the base of the hills outlines the width of the Blue Hill zone of copper mineralization; Ann Mason visible in the distance; return to main road.
	22.5	Stay left and continue on two-track road.
	24.1	Stay left towards Blue Hill.
	24.6	Turn left onto Mason Pass Road.
	25.0	Driving along the trace of the Blue Hill fault; post-mineral volcanic rocks on the right (south) and mineralized rocks of the Yerington Batholith on the left that are the western portion of the Blue Hill zone of copper mineralization.
	25.5	Turn left onto drill road.






**ENTRÉE GOLD ANALYST TOUR
SEPTEMBER 2011 - TOUR LOG (continued)**

Map Number	Mileage	Description
5	25.6	Outcrop of Blue Hill oxide copper mineralization ; mineralization occurs primarily on fractures as malachite, black Cu oxides and Cu-bearing iron oxides.
	26.2	Turn right onto Delphi Road.
	29.2	Stay left onto two-track road.
	29.9	Stay left onto two-track road.
6	30.4	Ludwig Mine produced approximately 200,000 tons of ore grading 2 - 6% Cu from a qtz-pyrite-chalcopyrite replacement vein and qtz-pyrite-chalcopyrite breccia. The Roulette porphyry copper target (option from Eurasian Minerals/Bronco Creek) located 2.6 mi (4.2 km) northwest under the flat, gravel-covered plain; return to Delphi Road - turn right towards Ann Mason.
	33.7	Stay left onto two-track road.
	34.6	Stay left onto two-track road.
	35.1	Turn right onto two-track road to Ann Mason overlook.
7	35.3	Ann Mason Overlook ; Looking to the northeast, the center of the Ann Mason deposit is located in the low area just north of the Mickey Pass Road; return to Mickey Pass Road.
8	36.0	Ann Mason deposit ; drill hole EG-AM-11-009 encountered higher-grade Cu mineralization at a depth of 66 m.
	36.6	Mickey Pass; Outcrop of Singatse Fault in prospect pit just to the left of the road
	37.2	Leaving Entrée Property
	39.0	Weed Heights built by Anaconda in 1952 for the Yerington Mine employees.
9	39.4	Yerington Mine Overlook (optional)
	41.3	Turn right onto Hwy 95A South
	41.6	Turn left onto Goldfield Avenue
	42.6	Turn left onto Hwy 95A East
	43.2	Entrée Gold Office and Core Facility



**ENTRÉE GOLD
YERINGTON TOUR ROUTE
NEVADA**

LEGEND

-  1 Tour Stop (details in tour log)
-  34.6 Mile Marker
-  Major Copper Producer (1952-1978)
-  Copper Deposits
-  Copper Occurrences





Entrée Gold Inc.

Suite 1201 - 1166 Alberni Street, Vancouver, BC, Canada V6E 3Z3

P: 604-687-4777 | **F:** 604-687-4770

www.entreegold.com