

# MAWSON



## Corporate Update

JUNE 26, 2013

Michael Hudson – President & CEO

[www.mawsonresources.com](http://www.mawsonresources.com)



Some of the statements contained in the following material may be "forward-looking statements." All statements, other than statements of historical fact, that address activities, events or developments that Mawson Resources Ltd ("Mawson") believes, expects or anticipates will or may occur in the future are forward-looking statements. Forward-looking statements are often, but not always, identified by the use of words such as "seek," "anticipate," "believe," "plan," "estimate," "expect," and "intend" and statements that an event or result "may," "will," "can," "should," "could," or "might" occur or be achieved and other similar expressions. These forward-looking statements reflect the current expectations or beliefs of Mawson based on information currently available to Mawson. Forward-looking statements are subject to a number of risks and uncertainties that may cause the actual results of Mawson to differ materially from those discussed in the forward-looking statements, and even if such actual results are realized or substantially realized, there can be no assurance that they will have the expected consequences to, or effects on Mawson. Factors that could cause actual results or events to differ materially from current expectations include, among other things, failure to successfully complete intended financings, capital and other costs varying significantly from estimates, production rates varying from estimates, changes in world metal markets, changes in equity markets, uncertainties relating to the availability and costs of financing needed in the future, equipment failure, unexpected geological conditions, imprecision in resource estimates, success of future development initiatives, competition, operating performance of facilities, environmental and safety risks, delays in obtaining or failure to obtain necessary permits and approvals from government authorities, and other development and operating risks. Any forward-looking statement speaks only as of the date on which it is made and, except as may be required by applicable securities laws, Mawson disclaims any intent or obligation to update any forward-looking statement, whether as a result of new information, future events or results or otherwise. Although Mawson believes that assumptions inherent in the forward-looking statements are reasonable, forward-looking statements are not guarantees of future performance and accordingly undue reliance should not be put on such statements due to the inherent uncertainty therein. The qualified person for Mawson's projects, Michael Hudson, President & CEO for Mawson, and a Fellow of the Australasian Institute of Mining and Metallurgy, has reviewed and verified the contents of this overview.

- **Flagship 100% owned Rompas gold project in Finland: one of world's most spectacular high-grade, near surface gold and uranium discoveries, district scale 100km<sup>2</sup>;**
- **Early days, granted end 2012, <5% outcrop (or 95% unknown)**
- **Initial Discovery – Rompas (vein)**
  - High grade Au discovery from surface - 6km strike and up to 270m wide
  - Drilling South Rompas 2012: 6.0m at 617 g/t Au and 0.07% U<sub>3</sub>O<sub>8</sub> from 7m
    - Top 24% of all assay have a grade of 100g/t Au or more;
  - Drilling North Rompas 2013 : 0.4m at 395 g/t Au and 0.41% U<sub>3</sub>O<sub>8</sub> from 41m
- **New Discoveries – Rajapalot (disseminated) & Kaita**
  - Rajapalot 8km east – over several km to date, 80 grab samples up to 2,817g/t Au, average 152g/t Au;
  - Kaita – 900m south of ROM0011, 26 surface mineralized sites (11 with visible gold) to date
- **People, people, people**
  - Geologists with capital market experience;
- **Strong, supportive shareholder base, tightly held, timeframes aligned**
  - Reduces financing risk and validates the potential of the project.

## Capitalization Summary

Common Share Price (25 June 2013)	C\$0.55
Basic Common Shares Outstanding	56.0M
Fully Diluted	63.4M
Basic Market Capitalization	C\$30.8M
<b>Cash</b>	<b>C\$5.0M</b>
<b>TOTAL ENTERPRIZE VALUE</b>	<b>C\$24.8M</b>

## Major Shareholder Summary

	Shares	%
Sentient	13.2	23.6
AREVA	4.7	8.4
Pinetree	2.0	3.5
<b>TOTAL</b>	<b>22.1</b>	<b>35.5</b>
Insiders	5.0	9.6

➤ Management & Board aligned with investors

## Warrants and Options

### Options

Expiring Oct 18, 2013	\$0.82	1,768,000
Expiring Feb. 14, 2014	\$2.35	150,000
Expiring Aug. 2, 2014	\$1.72	220,000
Expiring March 5, 2015	\$1.30	100,000
Expiring March 29, 2015	\$1.24	125,000
Expiring August 9, 2015	\$1.49	50,000

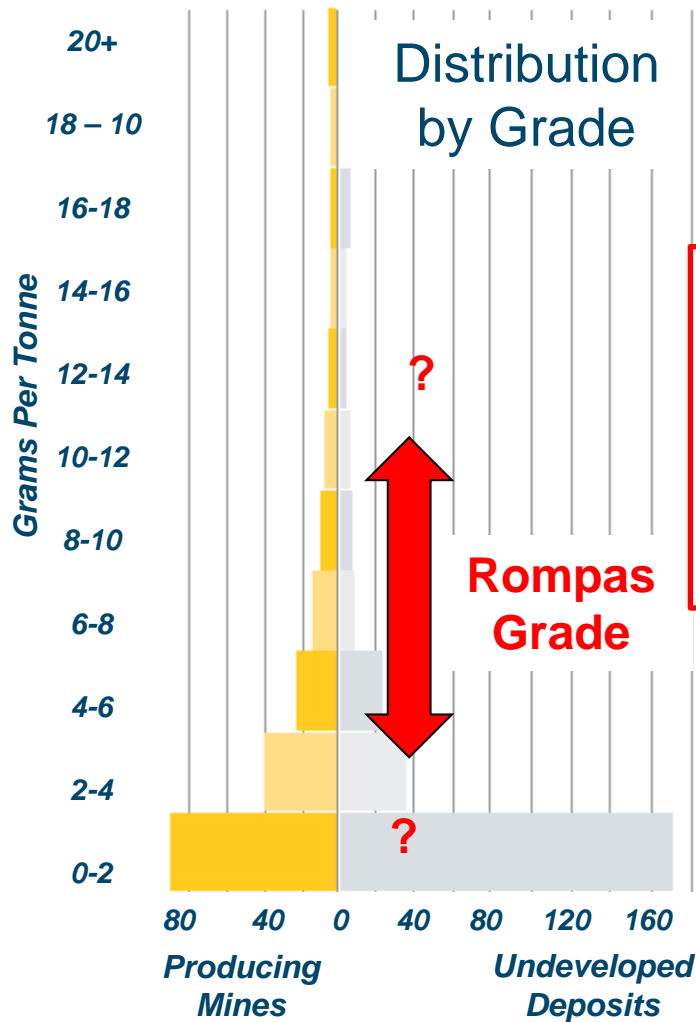
### Warrants

Expiring May 12, 2014	\$0.857	4,920,667
-----------------------	---------	-----------

## Share Price Performance – 1 Year



➤ Grade, scale, frequency and early days.



**97 g/t**  
Average of Rompas channel samples

**AVERAGE GLOBAL GOLD GRADE (g/t)**  
Producing Mines

**1.06**

Undeveloped Deposits

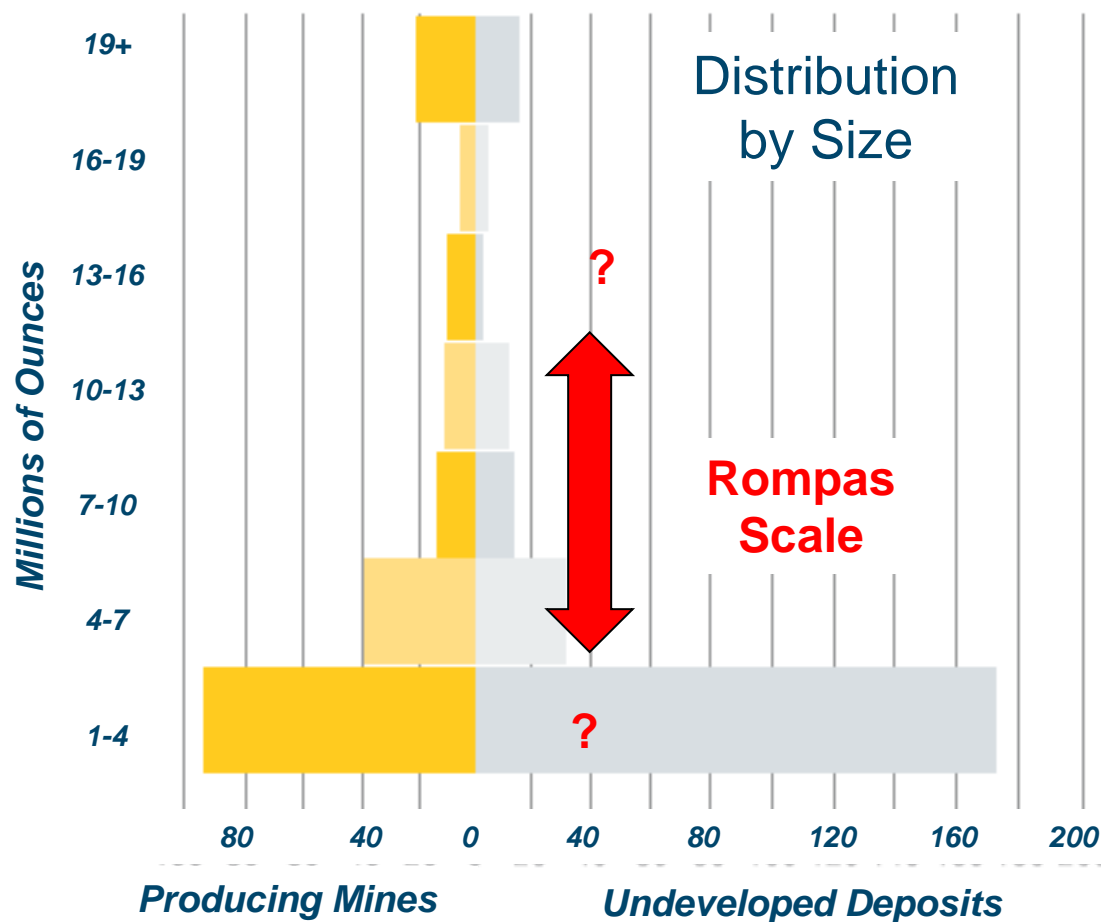
**0.66**

Combined

**0.82**

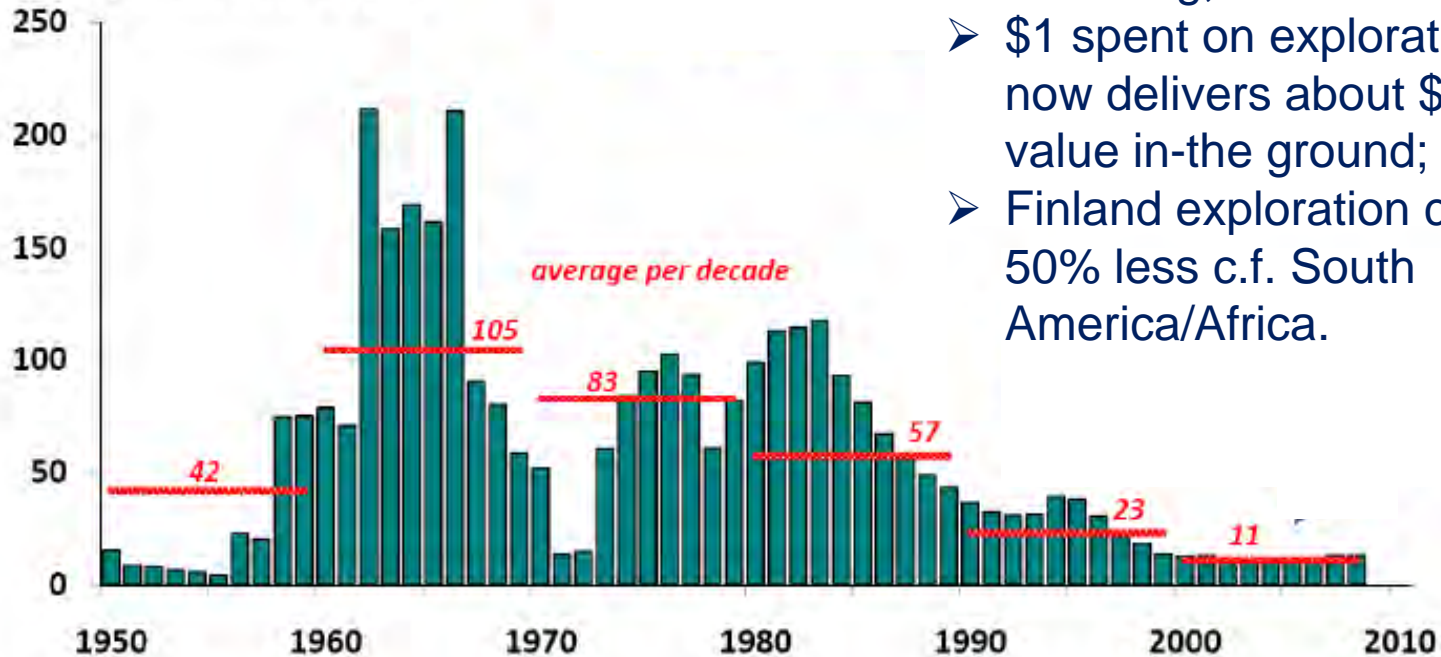
-37%

Grade, scale, frequency and early days.



**Rompas-  
Rajapalot  
high grade  
gold over  
100km<sup>2</sup>**

Ratio of in-situ value of gold found  
per exploration dollar spent



- Exploration Effectiveness Declining;
- \$1 spent on exploration now delivers about \$11 of value in-the ground;
- Finland exploration costs 50% less c.f. South America/Africa.

- **The industry needs smaller footprint, higher grade projects with less impact, that are easier to permit in GOOD countries**

# Simple Clear Strategy

- Focus on gold in Scandinavia;
- Build our business in the Nordic countries around Rompas;
- Focus on large, long-life assets;
- First mover advantage - largest deposits are generally found first in a camp;
- During 2013 maintain exploration momentum and focus on shareholder interests by continuing to control overheads and invest capital in the ground
- Long term vision to cement ourselves as a Finnish company, local engagement – looking to list on NASDAQ OMX;
- European Uranium and Darwin Resources spinouts completed with non-core assets





## Management

Michael Hudson	President & CEO, Director, Geologist, 22 yrs
Dr. Nick Cook	VP Exploration, Geologist, 18 years
Dr. Erkki Vanhanen	Exploration Manager Scandinavia, Geologist, 27 yrs
Dr. Jan-Anders Perdahl	Chief Geological Consultant, Sweden, Geologist, 30 yrs
Terry Lees	Principal Geologist, 35 yrs

## Directors

Nick DeMare	Accountant, 33 yrs
David Henstridge	Geologist, 40 yrs
Gil Leathley	Mining Engineer, 50+ yrs
Mark Saxon	Geologist, 20 yrs
Colin Maclean	Geologist/Finance, 40 yrs



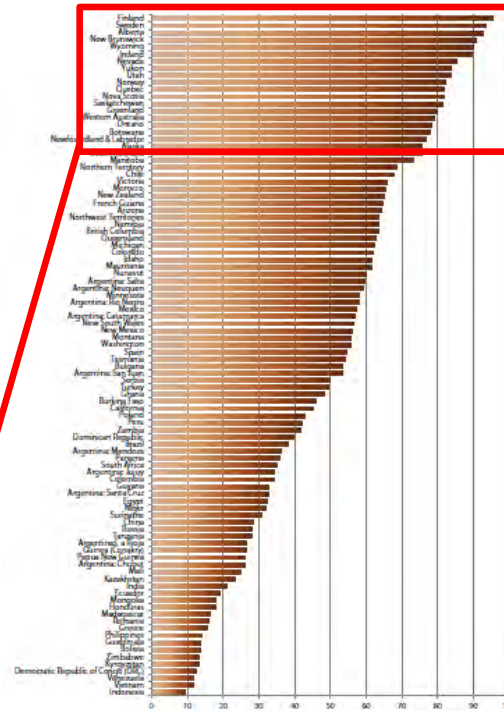
# Open for Business – Globally 1<sup>st</sup> and 2<sup>nd</sup>

FRASER INSTITUTE ANNUAL

Survey of Mining Companies  
2012/2013



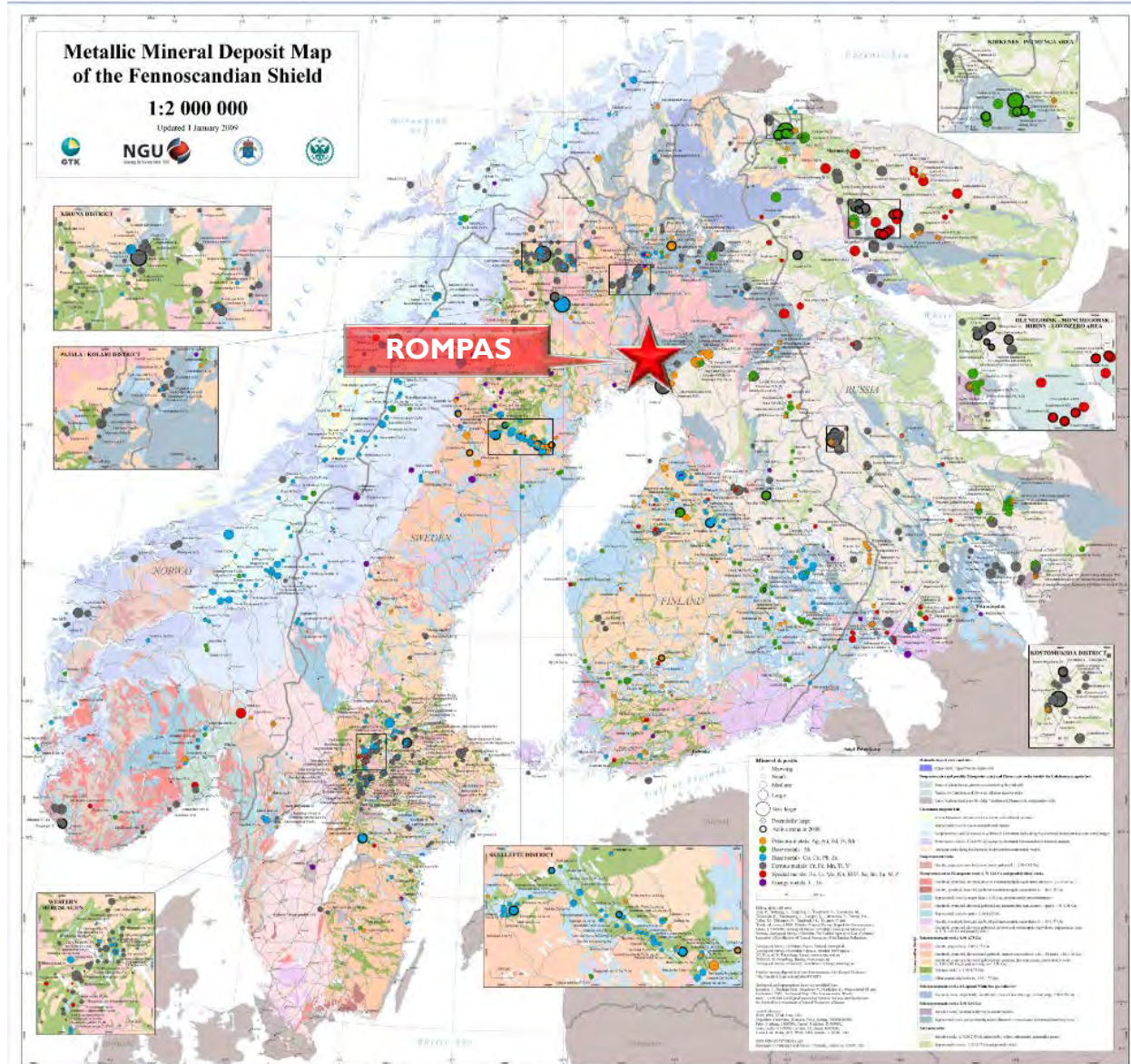
by Alana Wilson, Fred McMahon, and Miguel Cervantes  
Survey Director: Kenneth P. Green



Policy  
and  
Mineral  
Potential

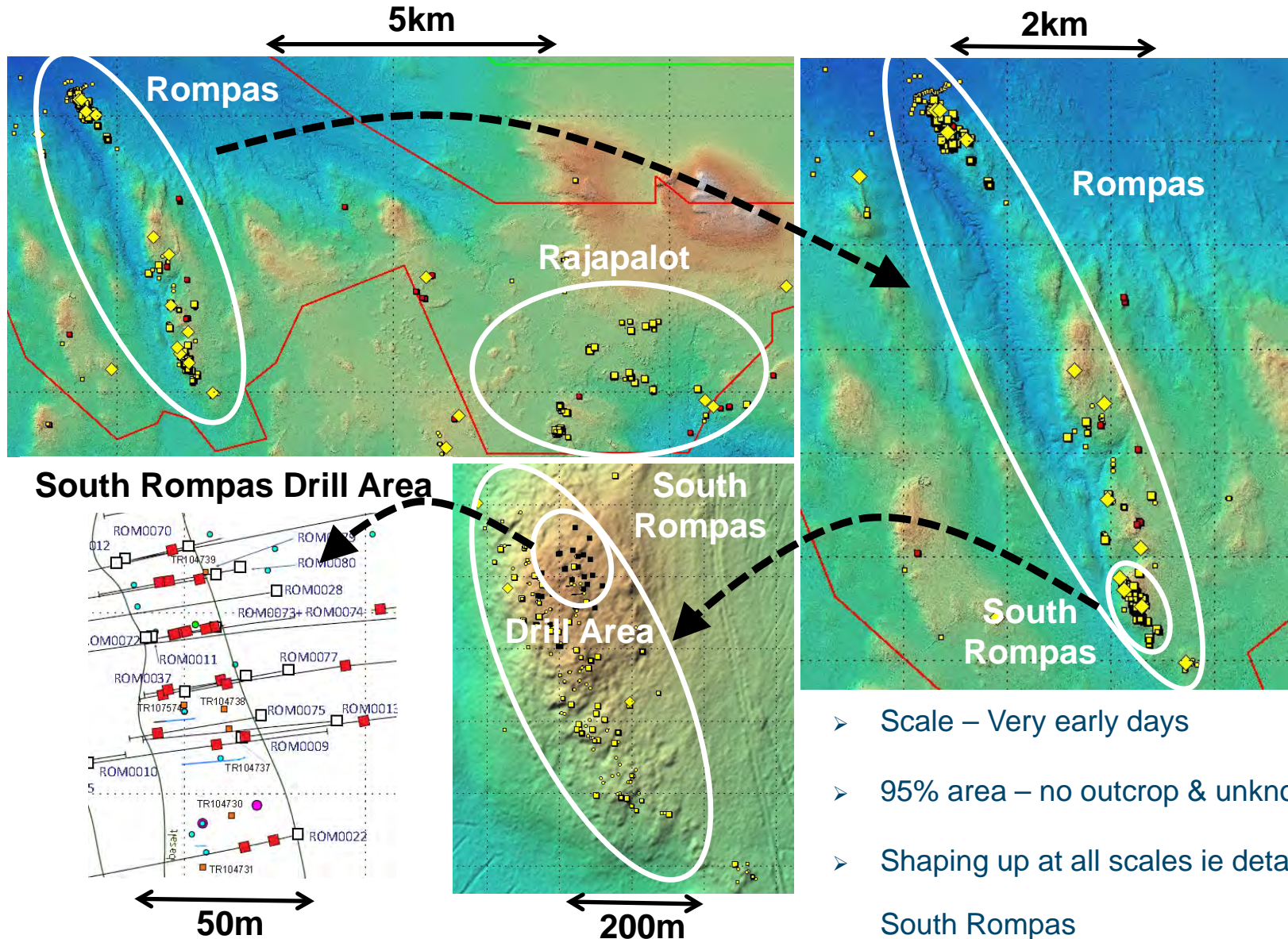


- Metal basket of Europe;
- +500 year history, many Tier 1 projects;
- Reformation since early 1990's. Clear guidelines;
- World class systems being discovered at surface (Norra Karr, Sakatti – Anglo, Rompas);
- 100 years behind
- Team behind MAW developing 2 mines in Scandinavia



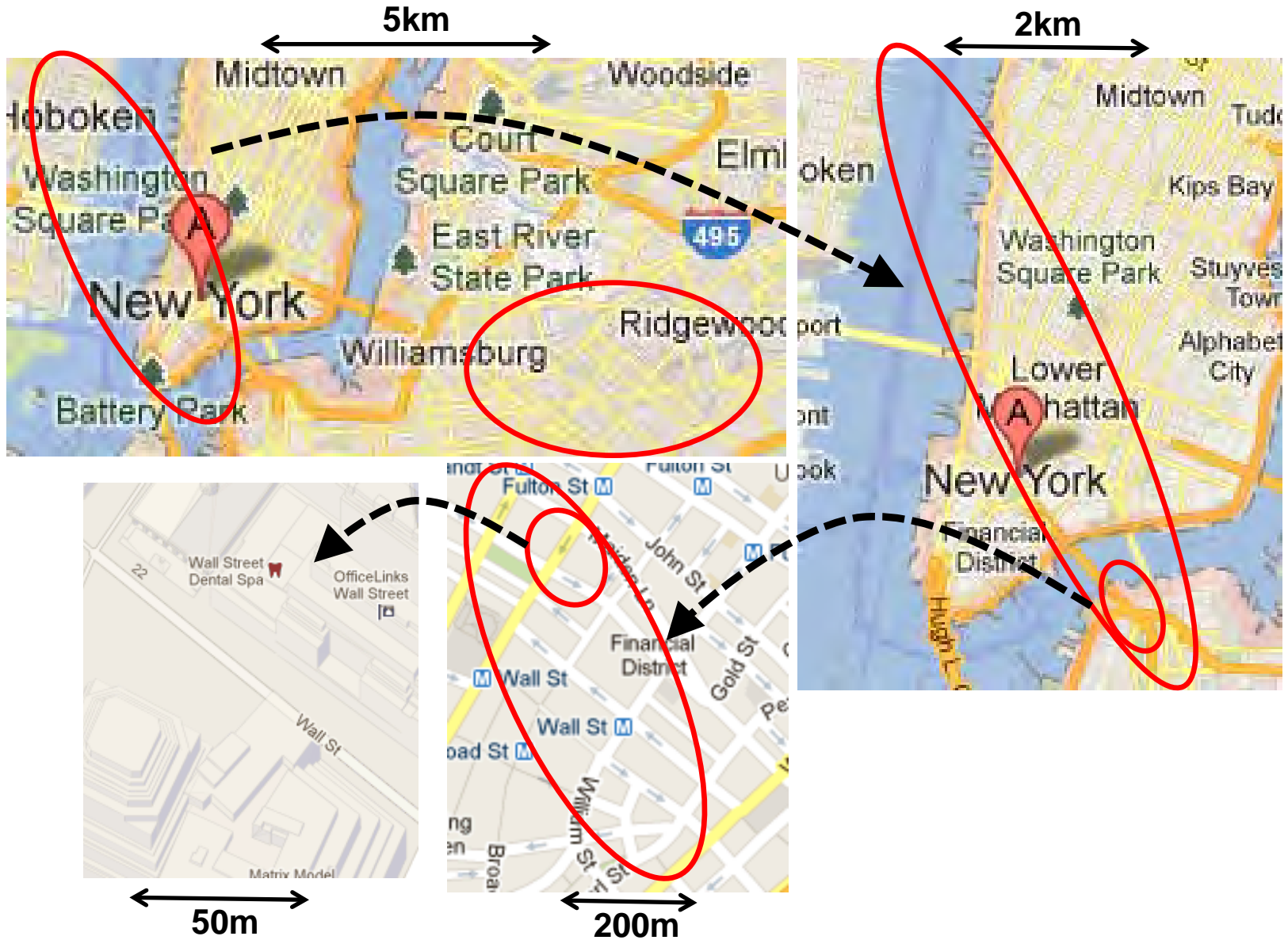
# THE BIG PICTURE

# Scale is Challenging To Understand



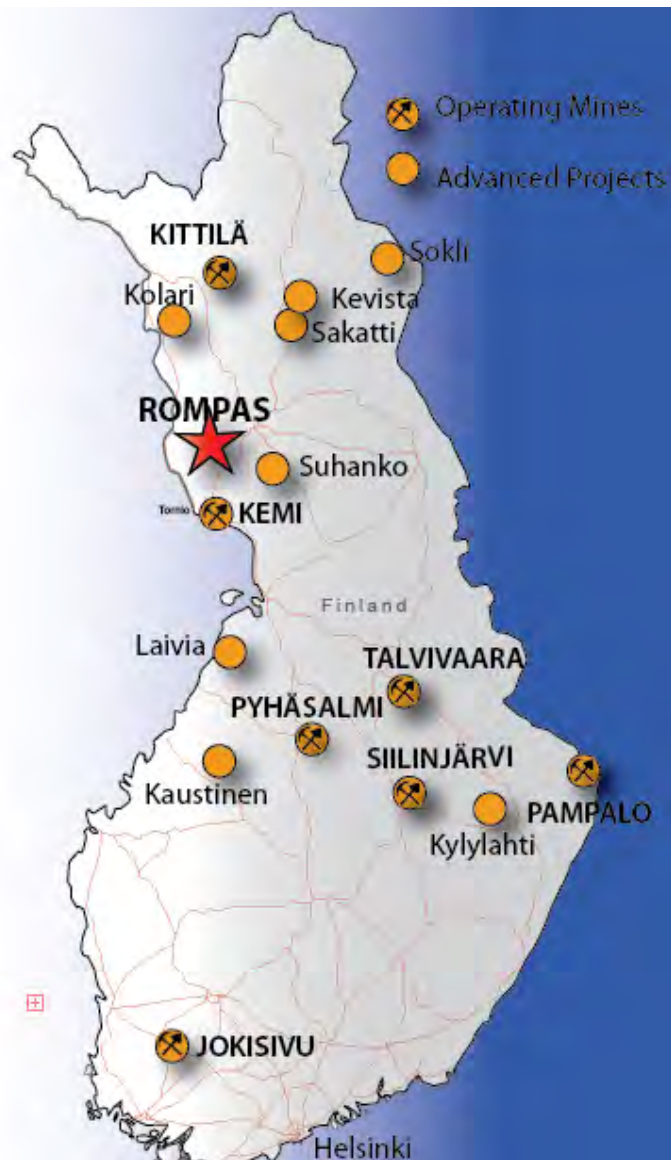
- Scale – Very early days
- 95% area – no outcrop & unknown
- Shaping up at all scales ie detail at South Rompas

# Jersey – Brooklyn - New York Comparison

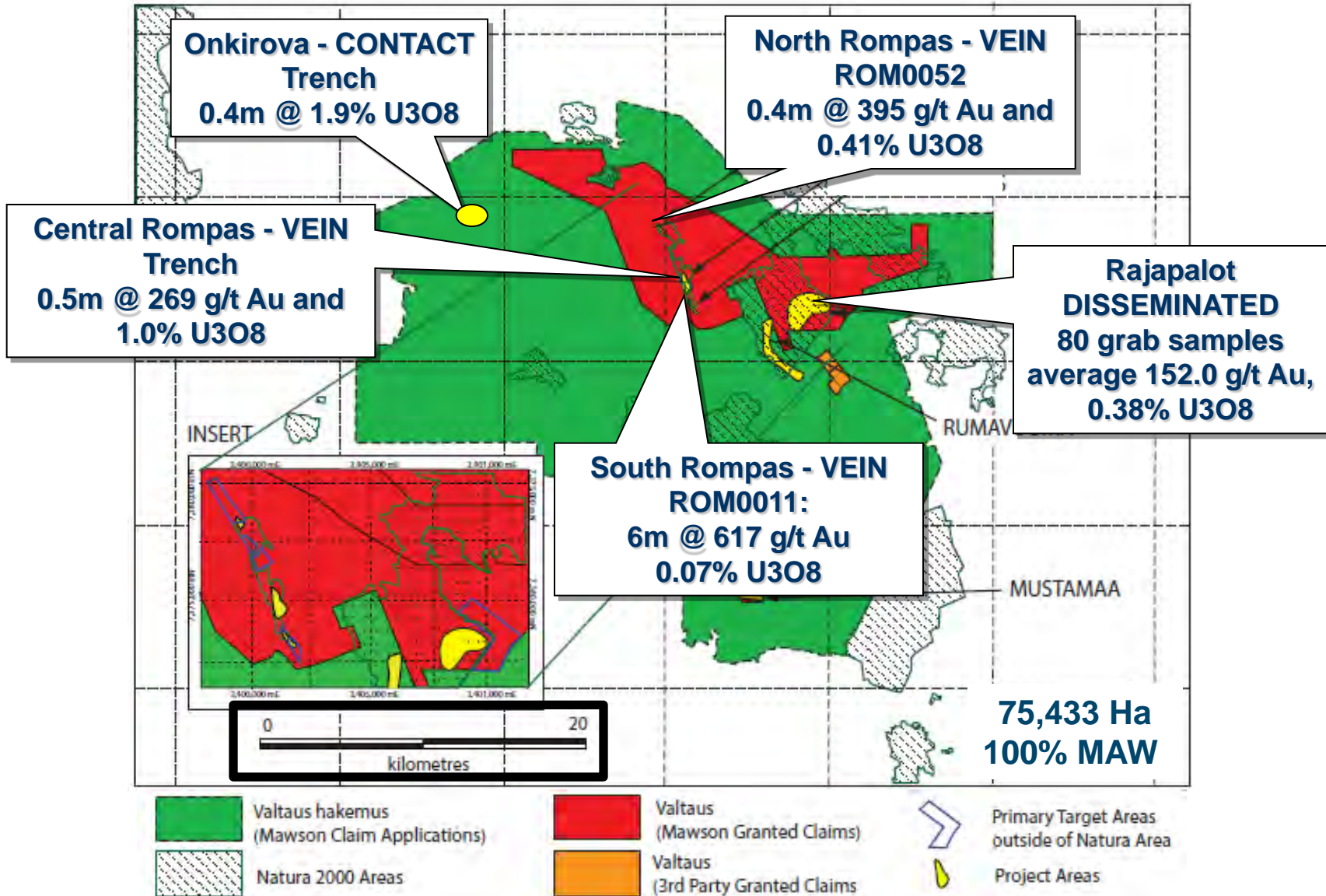


# Rompas - Rajapalot

- Rompas discovered Sept 2008, first exploration by MAW: 2010, Rajapalot discovered: Aug 2012
- Truly bonanza grades, +300 sites Rompas 6km strike;
- Extremely high grade
  - drillhole ROM0011 6m @ 617 g/t Au;
  - 204 g/t Au over 0.59m – average of 80 channel samples (2010)
  - 51.9 g/t Au over 1.40m - average of 74 channel samples (2011)
  - 1,127 g/t Au - average of 171 grab samples
  - up to 33,200 g/t Au
- Second new discovery at **Rajapalot** - high-grade gold within 10km by 10km.
- Grade + Scale + Infrastructure = Potential  
CAPEX and OPEX implications

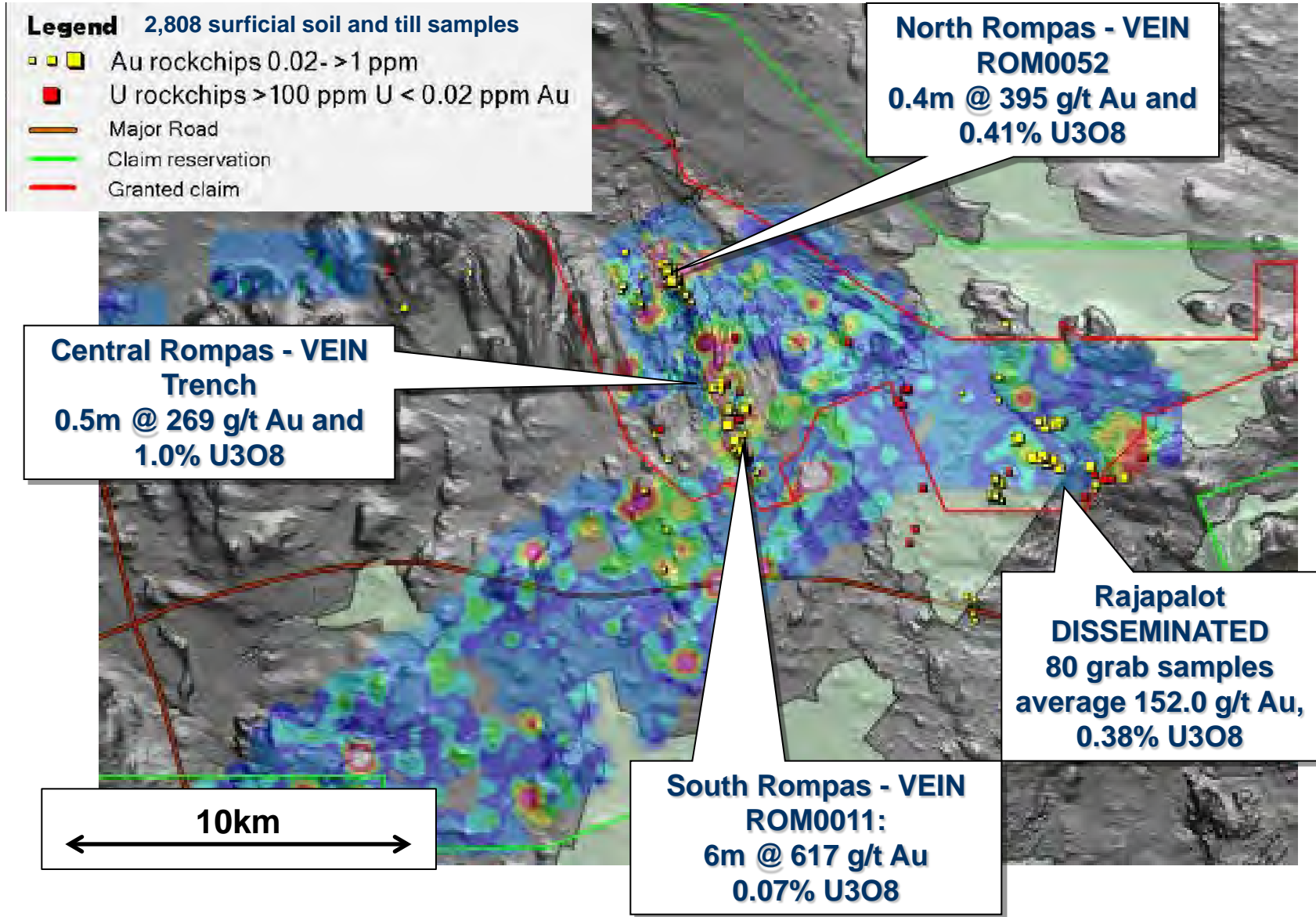


# Rompas-Rajapalot: 10km x 10km Gold Camp



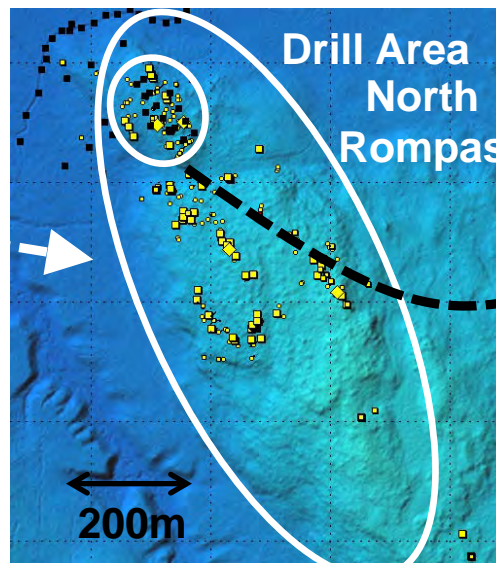
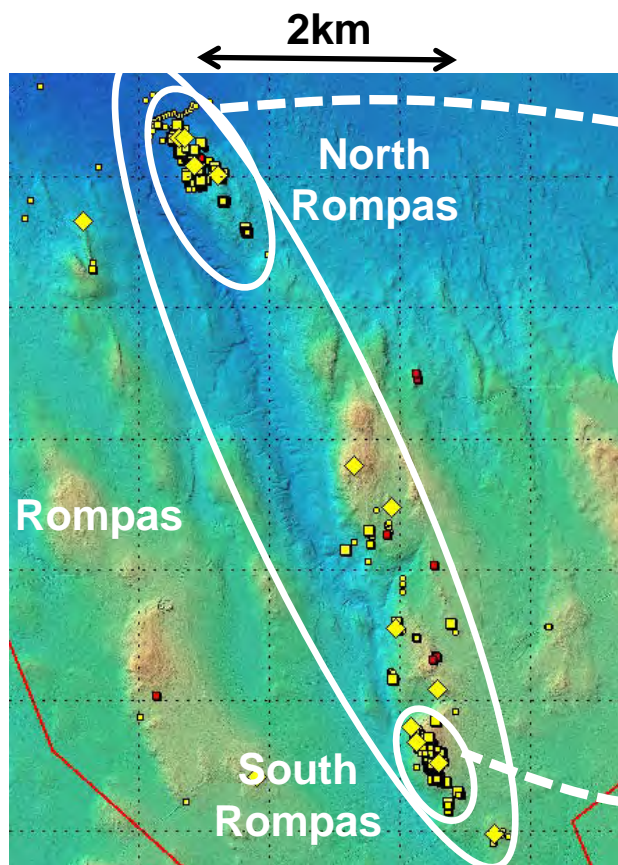


# Rompas-Rajapalot: A Horizon Soil Samples

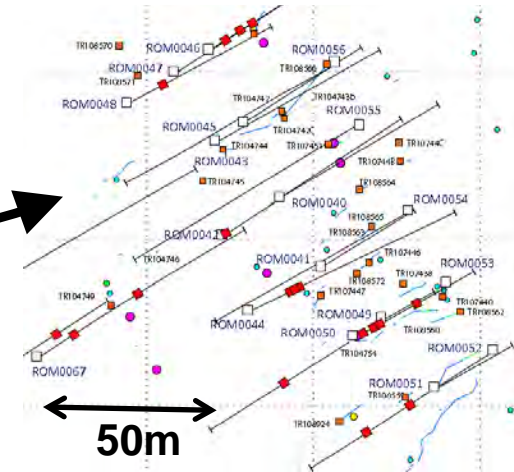


# MEDIUM SCALE

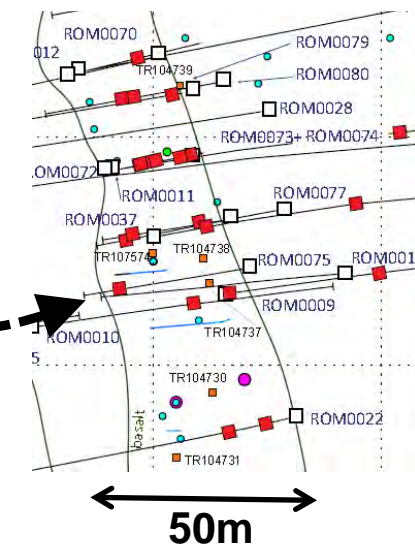
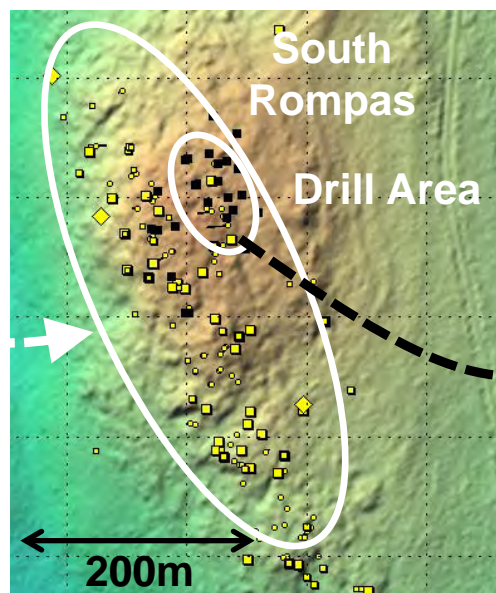
# Only Drill Tested Tiny Fraction of Area



### North Rompas Drill Area



### South Rompas Drill Area



>95% Unknown, undercover

# Kaita – A New Discovery

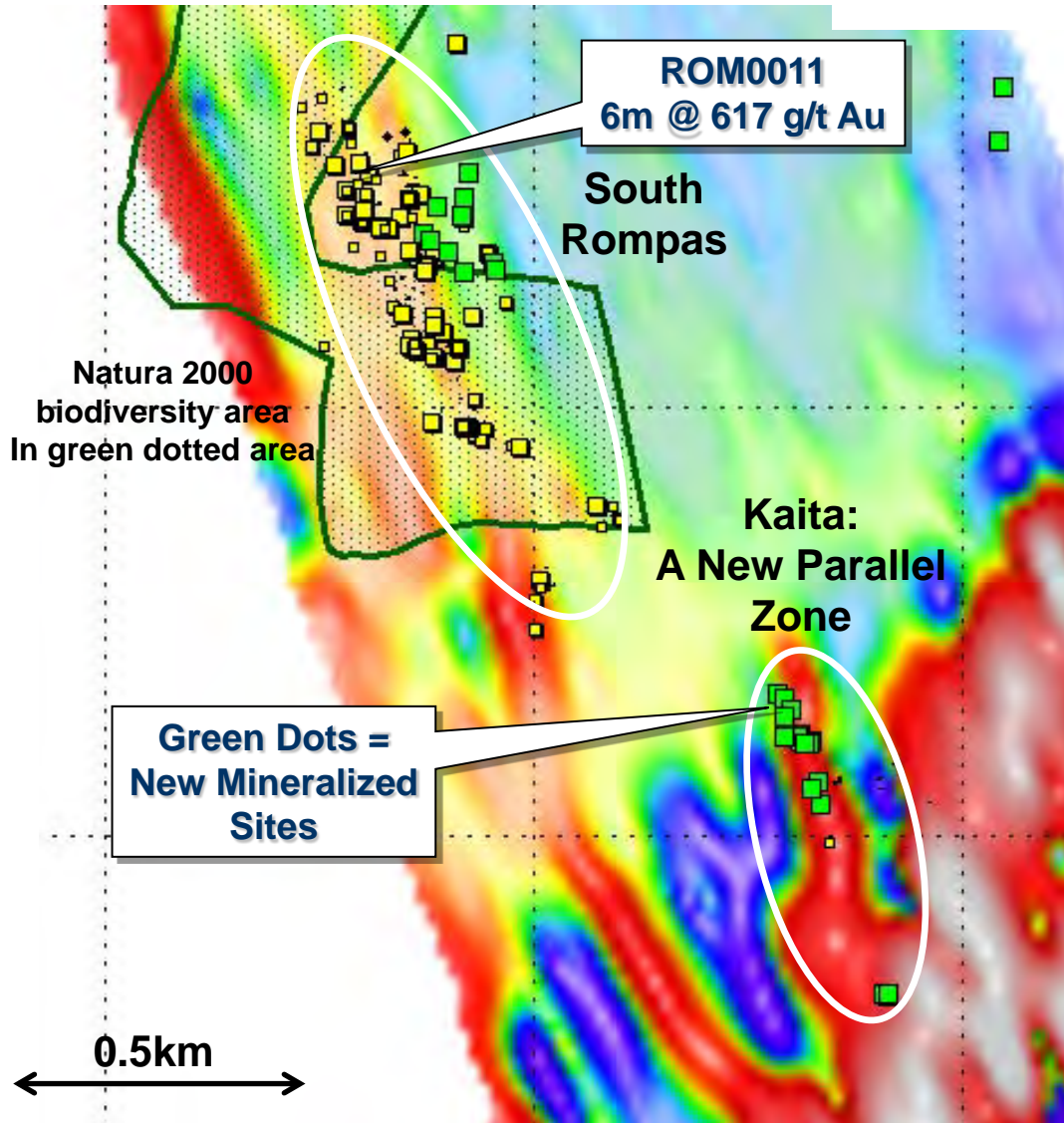


Image: IP Chargeability

- To date (June 26 2013) consists of 26 surface mineralized sites (11 with visible gold) within an area defined by 415 metres strike and 40 metres width.
- Parallel to and located 900 metres SEE of the South Rompas drill area
- Channel sampling has already commenced at Kaita and assays are awaited.
- Visible gold in the field has been observed in both uraninite and within carbonate. Biotite-rich alteration, of the same style as Rajapalot, has also been observed.
- Kaita is located outside the Natura 2000 biodiversity areas

# Best Heavy Mineral Sample in Fennoscandia: 5,000 Gold Nuggets

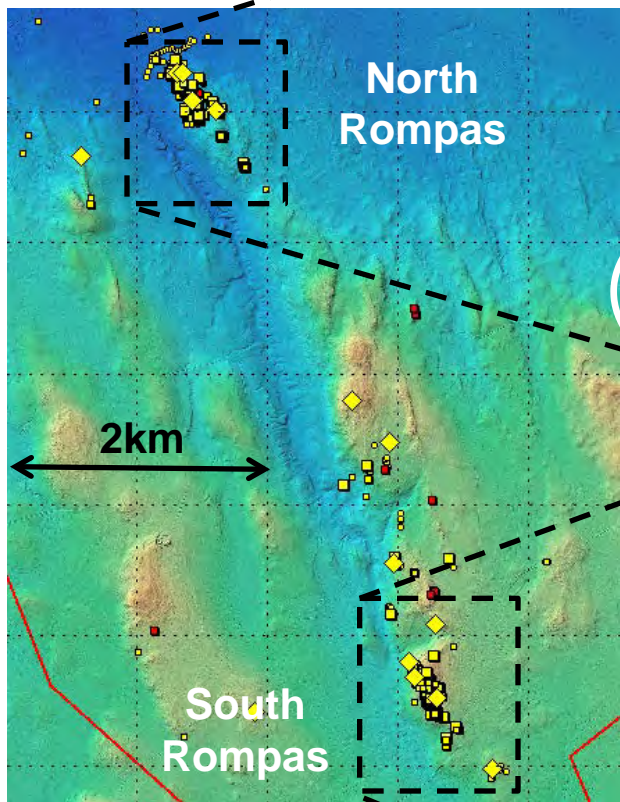
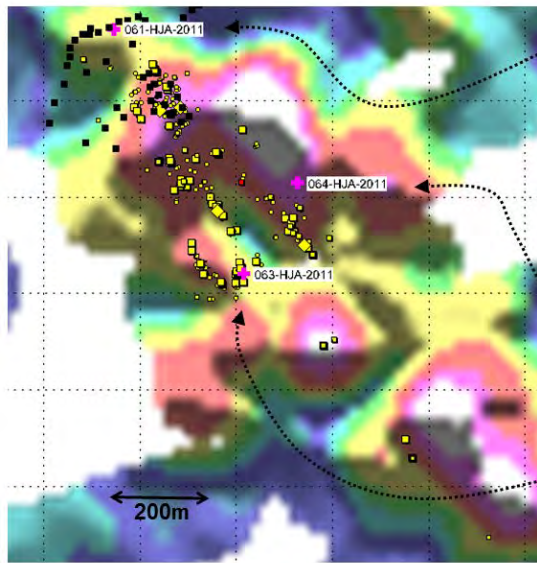


Image: Levelled gold in soil and till samples



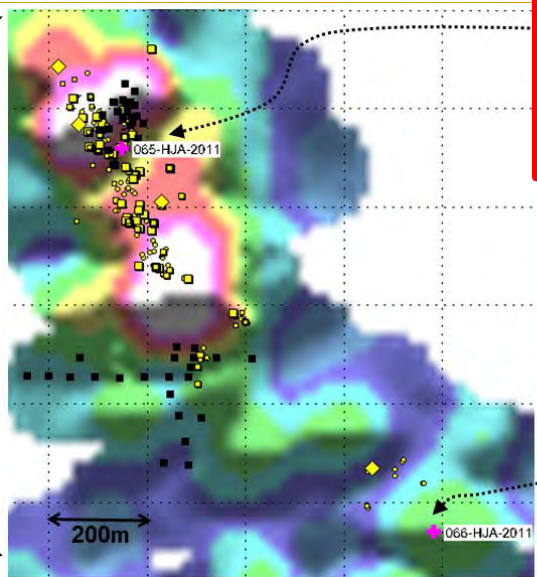
**18 Gold Nuggets**  
Mostly small grains, one 0,1 mm angular



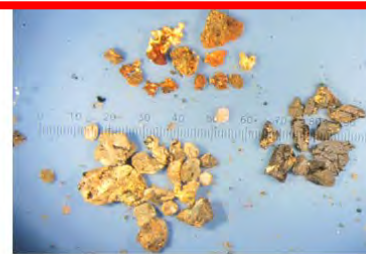
**100 Gold Nuggets**  
Mostly angular gold grains, include 0,28 and 0,3 mm grains.

**1000 Gold Nuggets**  
Many >0,1 mm grains, biggest 0,6 mm. Large average gold grain size.

Image: Levelled gold in soil and till samples

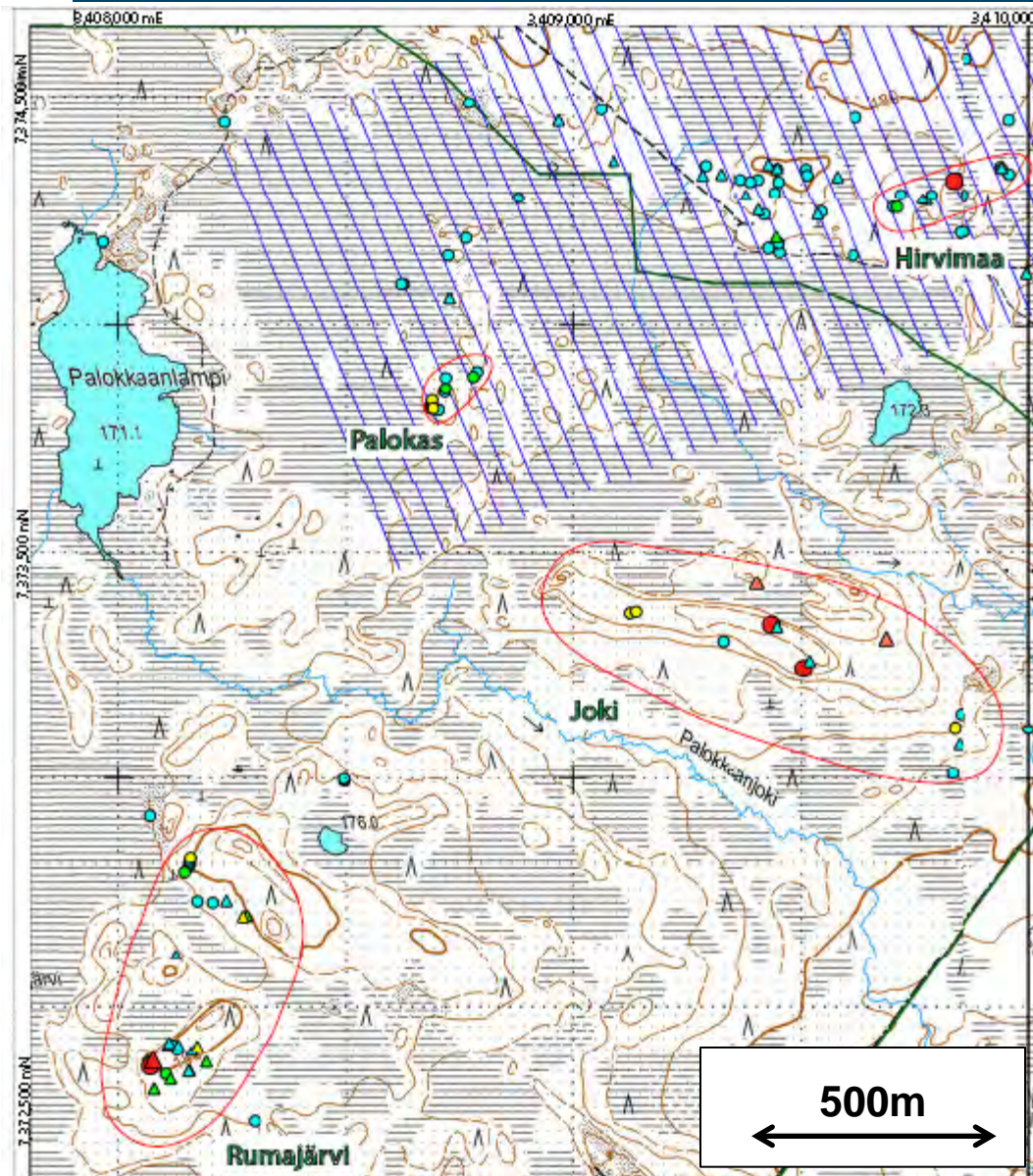


**5000 Gold Nuggets**  
Best HM sample ever seen. 40-50 gold grains and mixed gold grains with U-minerals and calcite in the 0.5-2 mm fraction

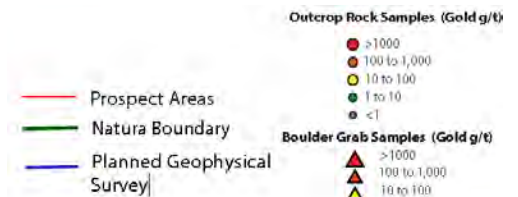


**100 Gold Nuggets**  
Mostly 20-40 microns in size, two 0,2 mm grains. Pristine shape.

# Rajapalot – 2<sup>nd</sup> Bonanza Discovery

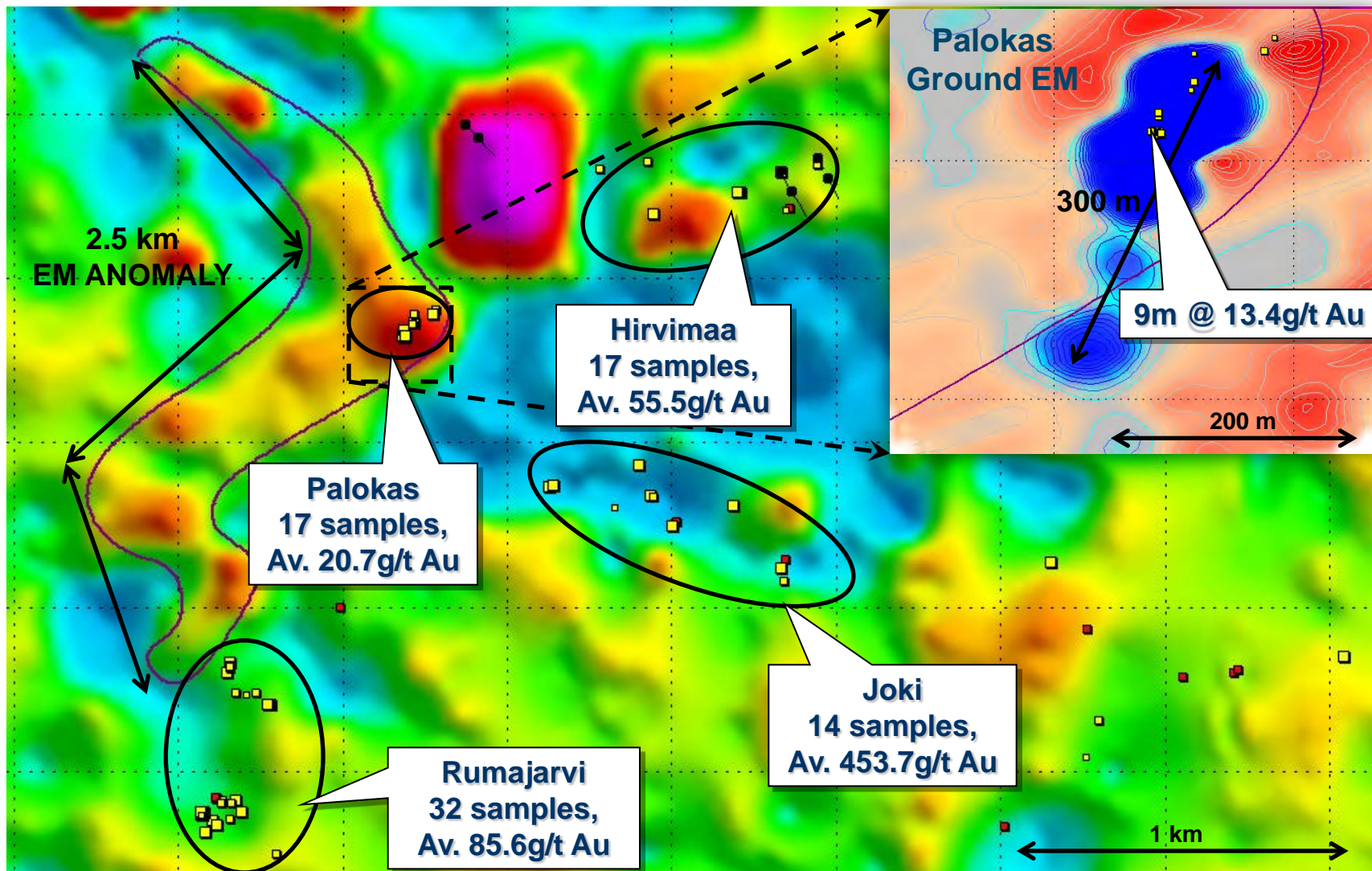


- Located 8km east of Rompas
- Disseminated style
- 80 samples from the Rajapalot prospect to date average 152.0 g/t Au) and 0.38% U3O8) and range from 0.001g/t to 2,817g/t Au
- 4 areas within 4km<sup>2</sup>



# Rajapalot EM Geophysics

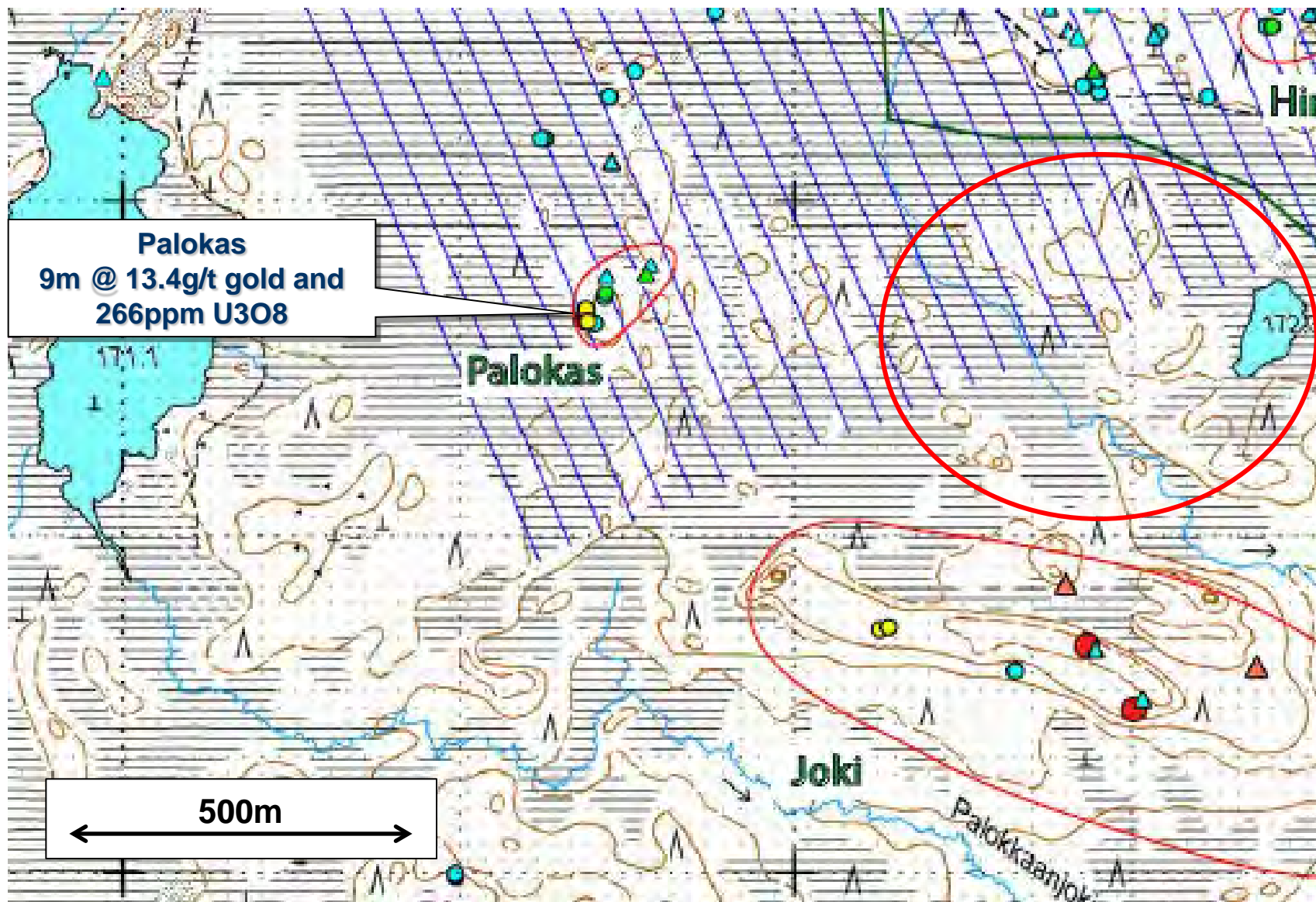
- Conductor immediately below the widest zone of continuous gold to date.



■ ■ ■ Au rockchips 0.02- >1 ppm

■ U rockchips >100 ppm U < 0.02 ppm Au

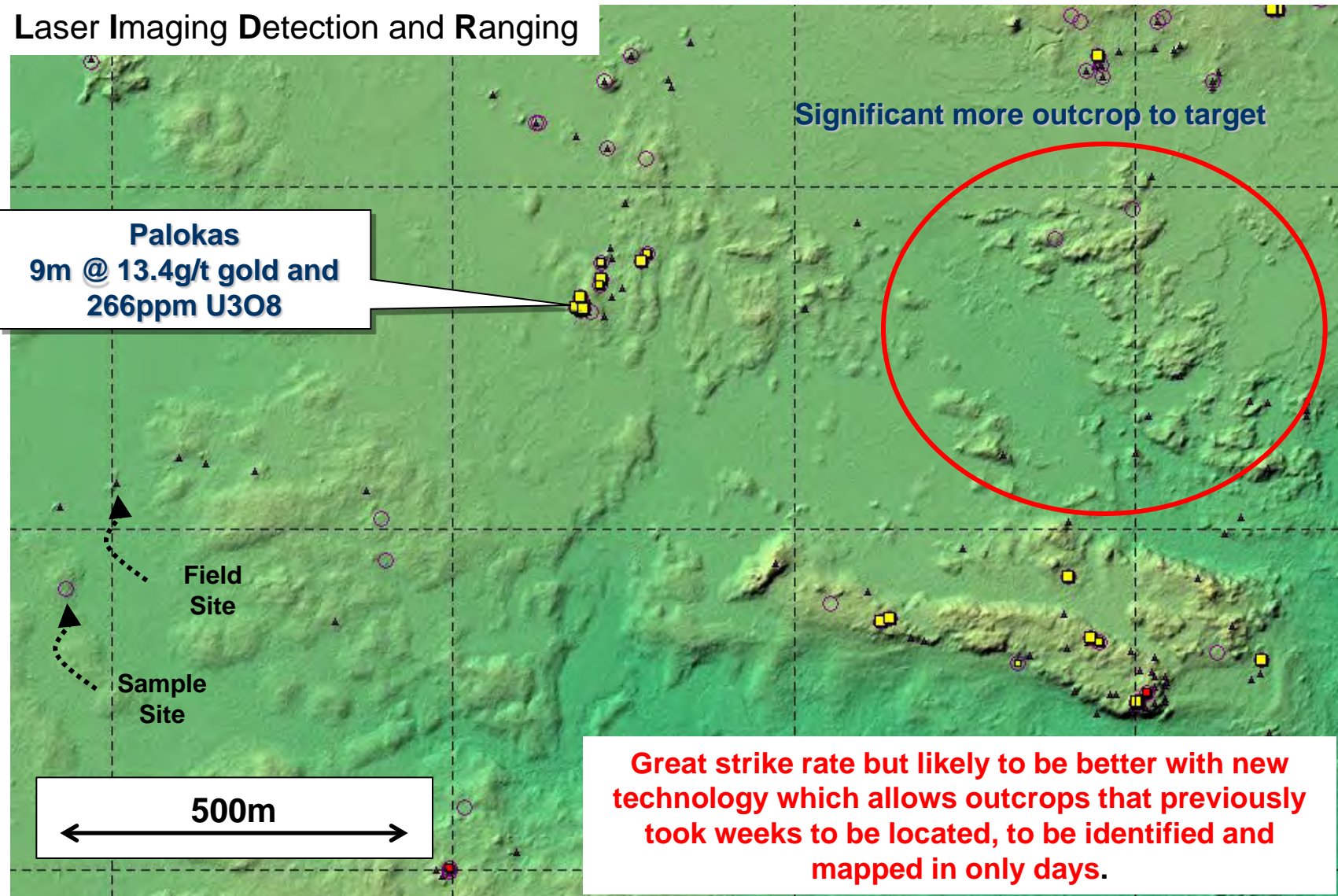
# Rajapalot – Old Technology





# Rajapalot – LIDaR New Technology

Laser Imaging Detection and Ranging



Significant more outcrop to target

**Palokas**  
9m @ 13.4g/t gold and  
266ppm U3O8

Field Site

Sample Site

500m

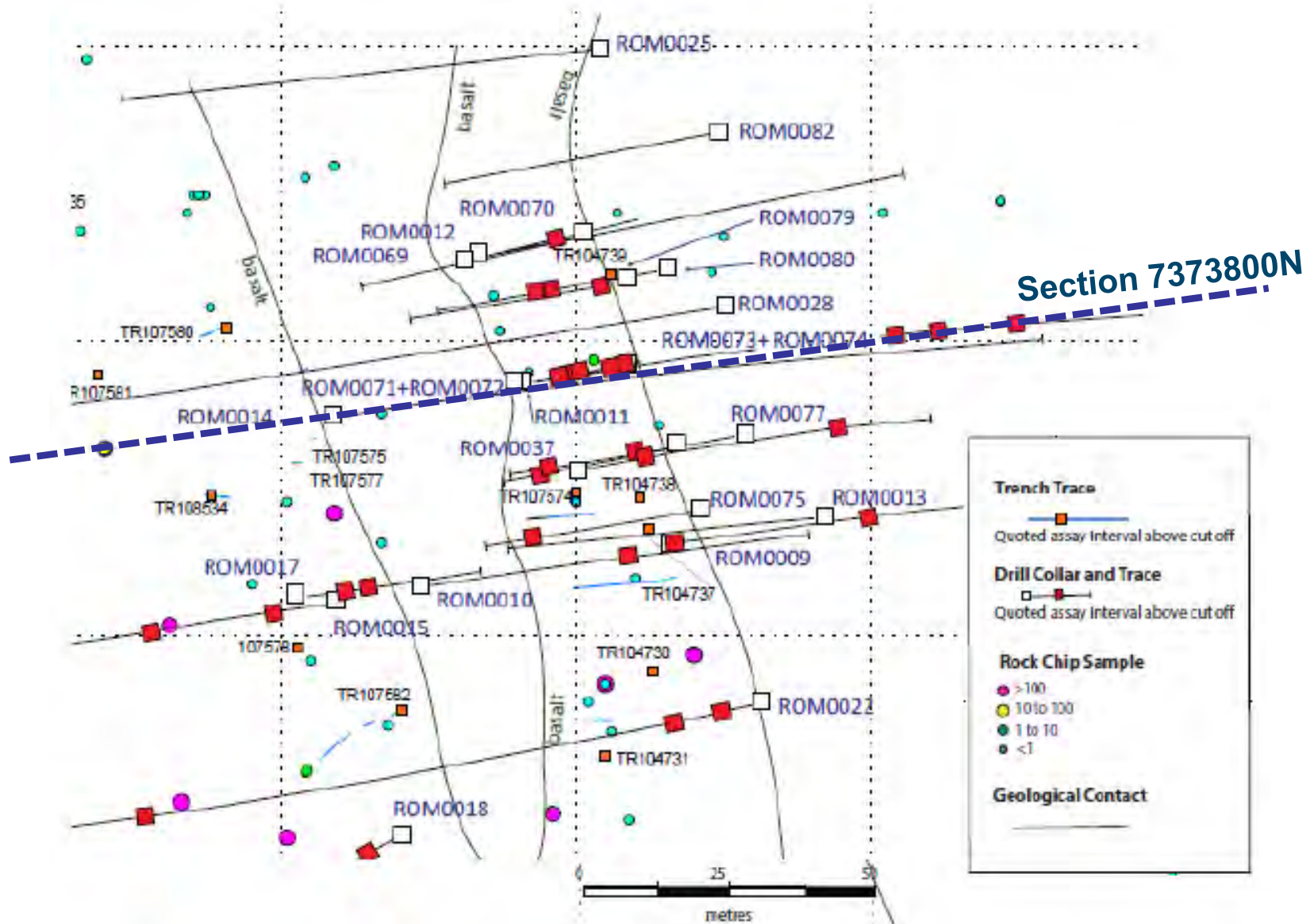
Great strike rate but likely to be better with new technology which allows outcrops that previously took weeks to be located, to be identified and mapped in only days.

■ ■ Au rockchips 0.02- >1 ppm

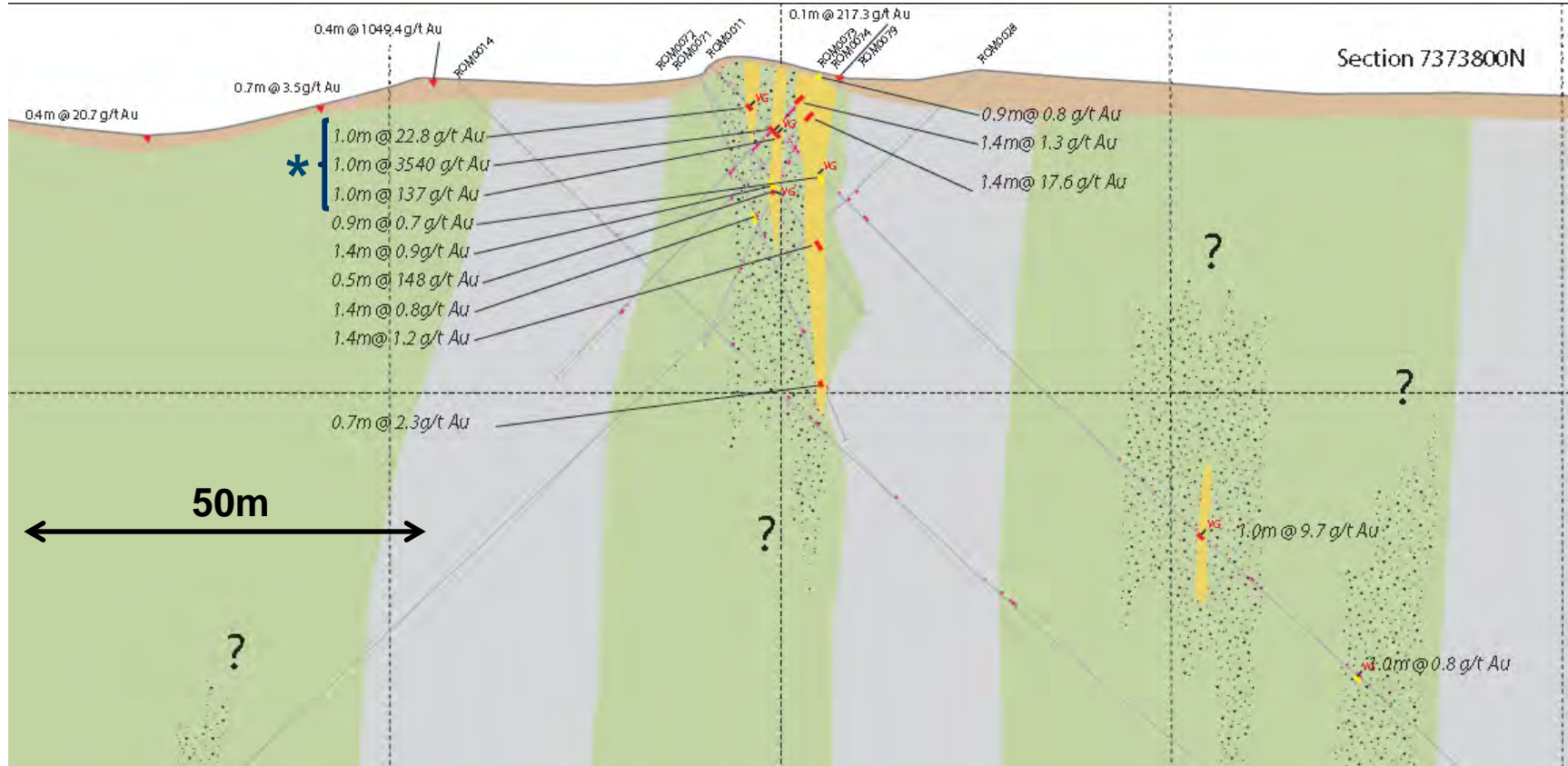
■ U rockchips >100 ppm U < 0.02 ppm Au

# THE DETAIL

# South Rompas – Plan



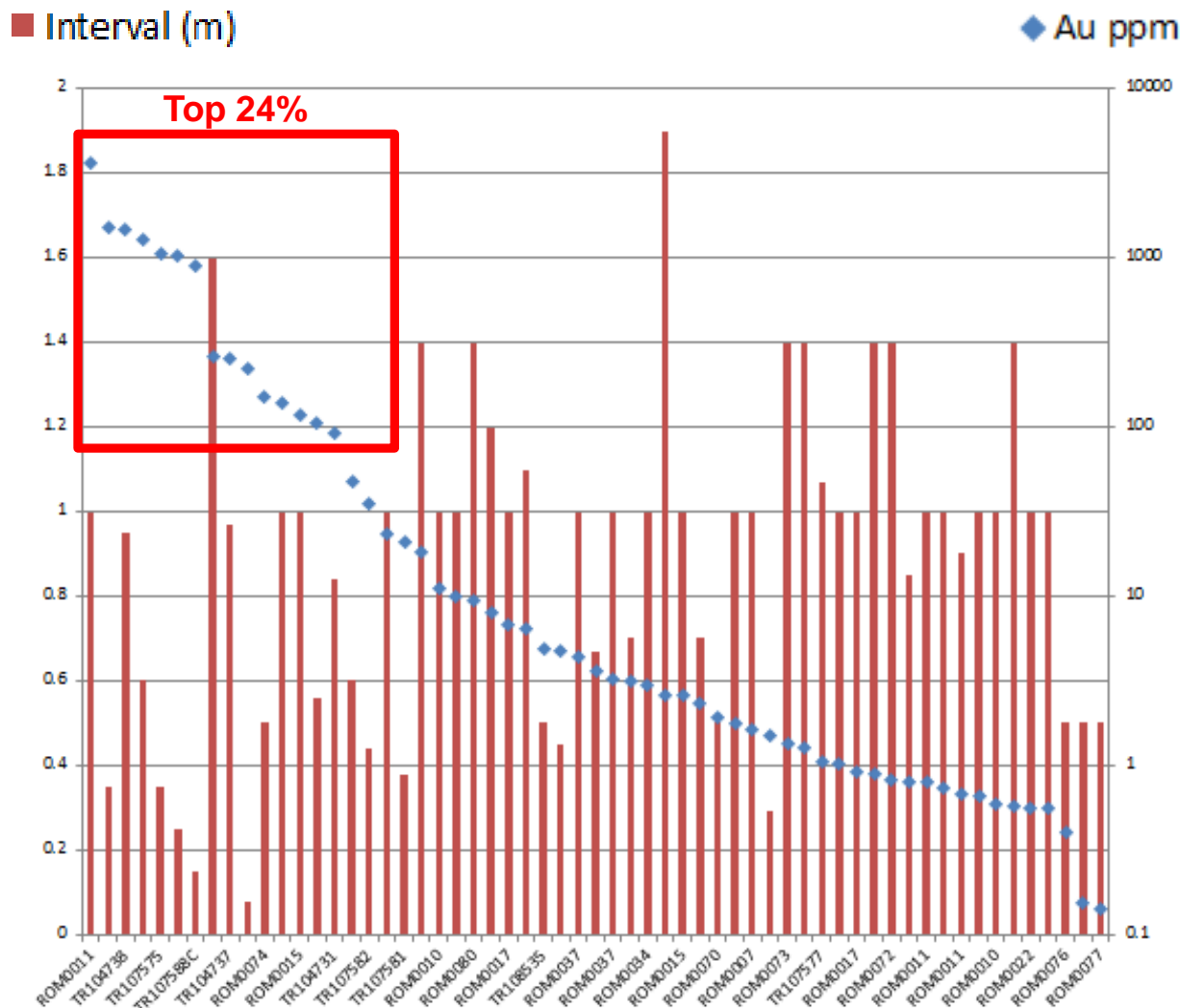
# South Rompas – Section 7373800N



- Overburden
- Gold Zone
- Metabasalt
- Metasediment
- Uranium Halo
- Drill Hole & gold Intercept > 0.5g/t Au
- Drill Hole & Gamma >20cps
- Trench Data
- VG Visible Gold

\* or 6m @ 617 g/t Au = Best ever drill hole for gold in Finland, 11<sup>th</sup> hole in project 28

# South Rompas – Au ppm vs Width (m)

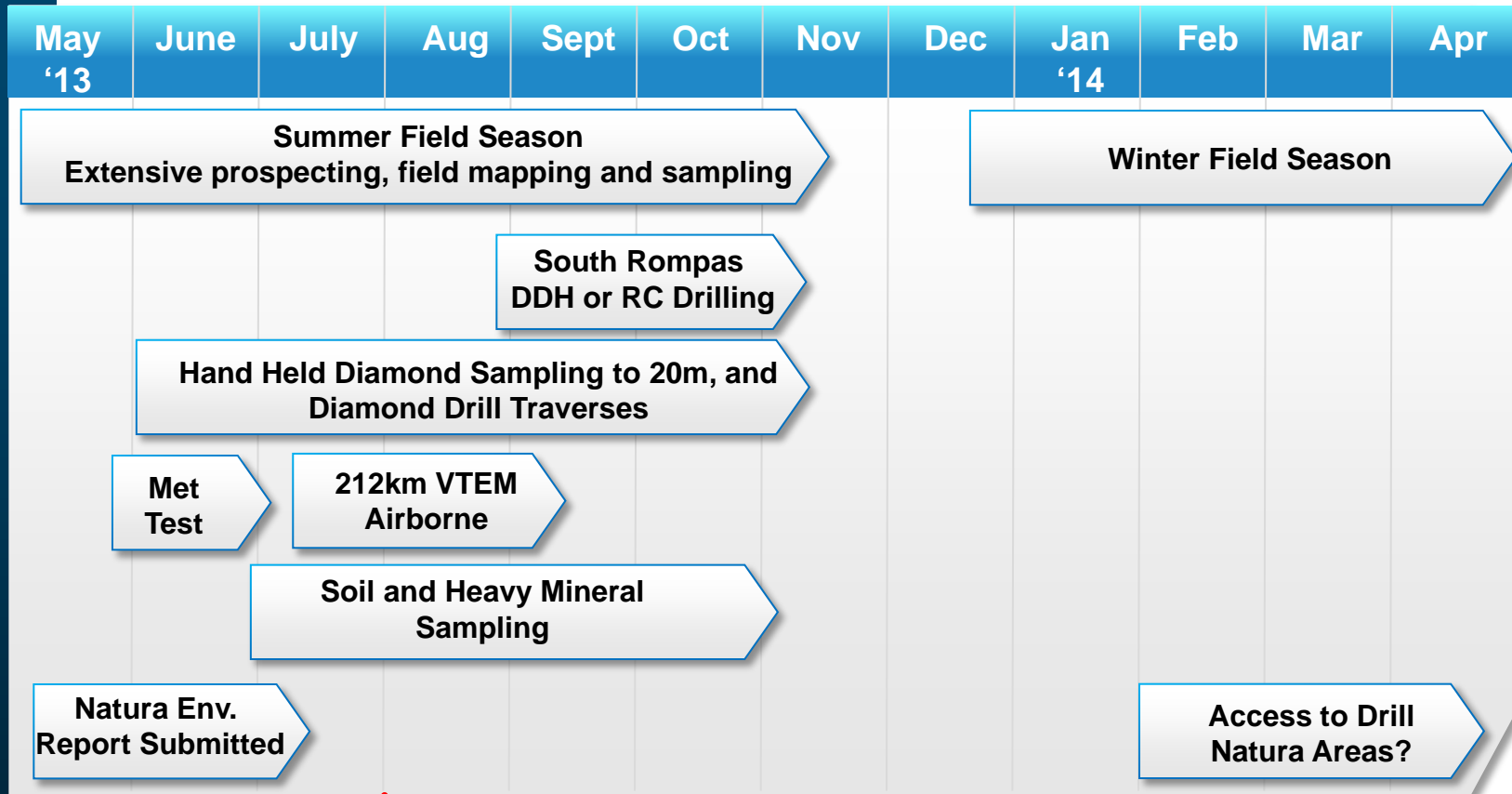


- Top 24% of all assays above cut have a grade of 100g/t Au or more;
- Top 20% of drill intersections have a grade of 10 g/t or higher;
- Highest grade single intersection grade of 3,540 g/t gold over 1m;
- Narrow intersection widths of 1-2m, average 0.9m;

Note: Grade in Logarithmic Scale

# 1 Year Timeline: Constant News

- 10 Finnish geologists to be mobilized to Rompas in early June 2013



**Summer Budget 2013:  
C\$2.5M**

# Project Goals: Continue to Deliver

**2008**

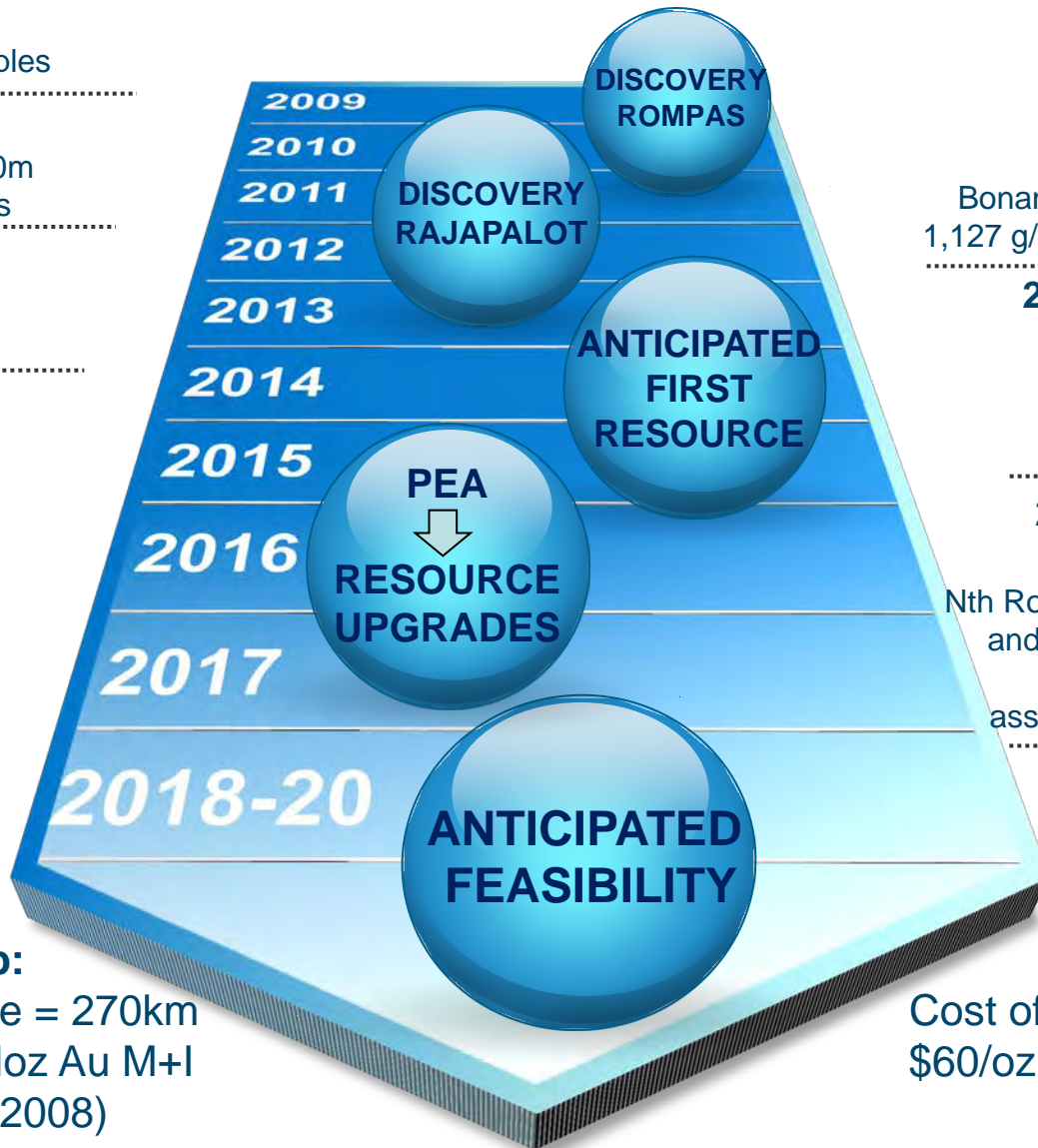
Discovery – 25 samples

**2011**

51.9 g/t Au over 1.40m  
Average 74 channels

**2013 - Goals**

Drilling  
Natura 2000 Access



**2010**

Mawson acquires project Bonanza – scale and frequency 1,127 g/t Au av. 171 grab samples

**2012 – Achievements**

Permitting  
Maiden Drilling  
6m @ 617g/t: ROM0011  
Rajapalot Discovery

**2013 – Achievements**

Kaita Discovery  
Nth Rompas 0.4m @ 395 g/t Au and 0.41% U3O8: ROM0052;  
Sth Rompas: Top 24% all assays grade 100g/t or more.

**Rule of Thumb:**

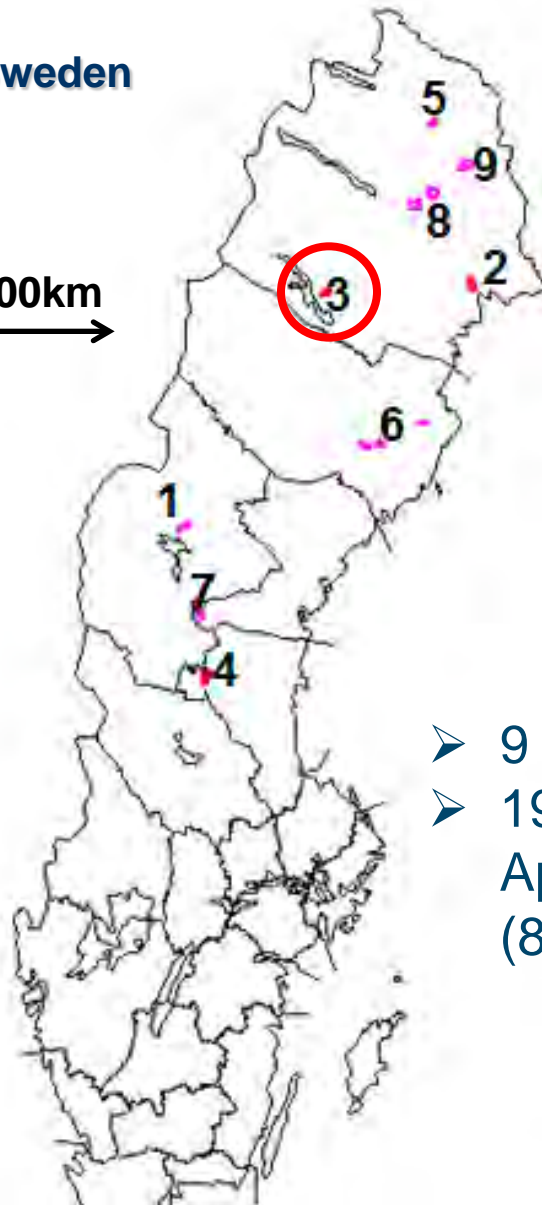
Kittila Gold Mine = 270km drilling for 3.5Moz Au M+I 2.2Moz Au Inf (2008)

**Rule of Thumb:**

Cost of discovery \$30/oz to \$60/oz Au (up from 10/oz) – Finland advantage

**Sweden**

200km  
↔

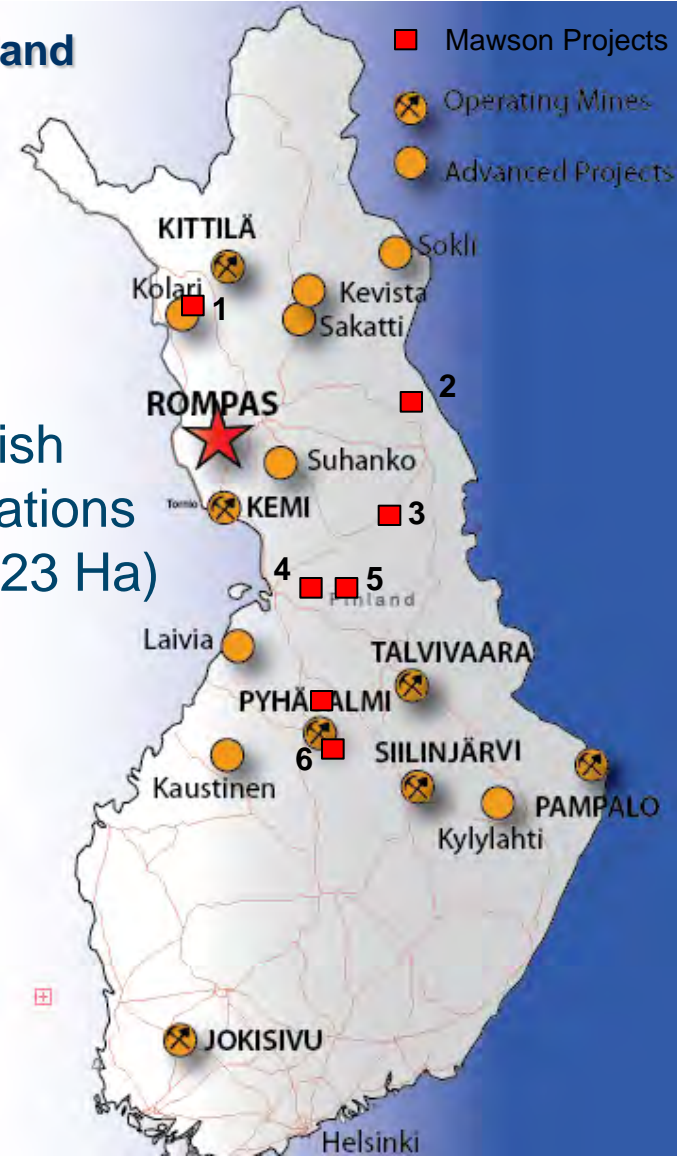


- 9 Projects
- 19 Claims and Applications (85,958Ha)

**Finland**

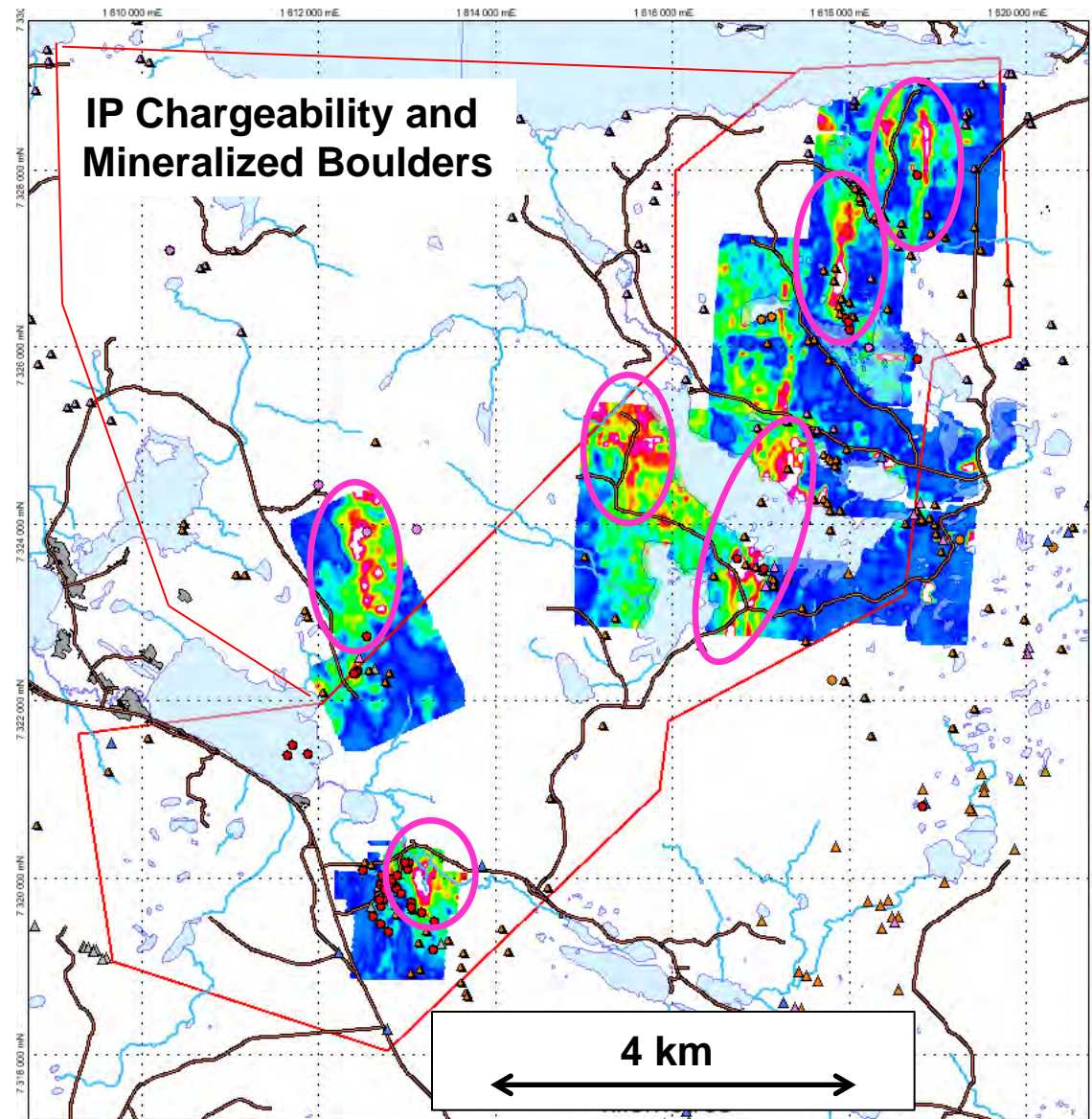
- Mawson Projects
- ⊗ Operating Mines
- Advanced Projects

➤ 7 Finnish Applications (104,223 Ha)





- Big IOCG/porphyry potential
- Exploration 1950's-80's, including BHP and Rio over last 10 years
- Many mineralized boulders and outcrops
- Poorly drill tested (last drilling 20 years ago)
- Geophysics untested



- Bonanza gold and high grade uranium discoveries over 6km;
  - Recent initial drilling returned 617 g/t Au over 6m, including 1m @ 3,540g/t;
- Best may be yet to come ;
  - 80% of targets yet to be permitted to drill
- Second high-grade discovery;
  - Rajapalot Au-U prospect just 8km away, with results of up to 2,817g/t Au;
  - Disseminated style may be easier to develop first resources
- Multi-percent uranium and bonanza grade gold intercepts are rare;
- Stock is tightly held. Word has just started to spread;
- Very experienced exploration team.



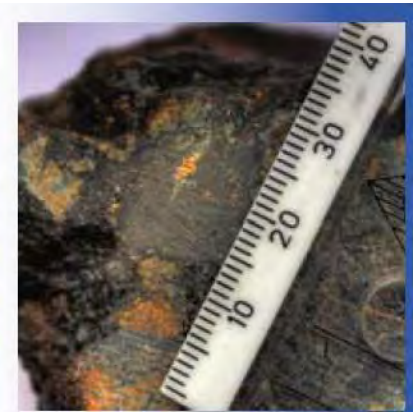
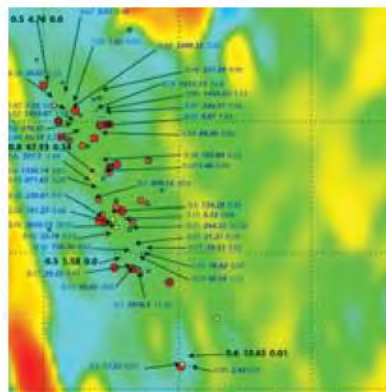
# Analyst Coverage

Mawson Resource Ltd is followed by the analysts noted. Any opinions, estimates or forecasts regarding Mawson's performance made by these analysts are theirs alone and do not represent opinions, forecasts or predictions of Mawson or its management. Mawson does not by reference to the analysts listed below imply its endorsement of or concurrence with the information, conclusions or recommendations provided by such analysts.

**Dundee Capital Markets**  
**Analyst: David A. Talbot**  
[dtalbot@dundeesecurities.com](mailto:dtalbot@dundeesecurities.com)

**Ocean Equities Ltd**  
**Analyst: Christopher Welch**  
[christopher.welch@oceanequities.co.uk](mailto:christopher.welch@oceanequities.co.uk)

**GMP Securities Europe LLP**  
**Analyst: Matt Fernley**  
[matt.fernley@gmpeurope.com](mailto:matt.fernley@gmpeurope.com)



## MAWSON RESOURCES LTD

Mariana Bermudez  
- Corporate Secretary  
Tel: +1 (604) 685 9316  
Fax: +1 (604) 683 1585  
[info@mawsonresources.com](mailto:info@mawsonresources.com)

Head Office:  
Suite 1305 - 1090 West Georgia St  
Vancouver, BC , V6E 3V7  
CANADA

## INVESTOR RELATIONS

Donna Werbes (Retail) - Vancouver  
Tel: +1 (778) 968 1623  
[dwerbes@mawsonresources.com](mailto:dwerbes@mawsonresources.com)

Seema Sindwani (Institutional) - Toronto  
Tel: +1 (647) 478 4255  
[ssindwani@albiscap.com](mailto:ssindwani@albiscap.com)

