



Platinum and Palladium targets at Turnagain

Hard Creek Nickel Corporation

HNC:TSX

www.hardcreeknickel.com

April 2013

Cautionary Statement

The Preliminary Economic Assessment (PEA) results released on October 20, 2011 were authored by AMC Mining Consultants (Canada) Ltd. The PEA includes the use of inferred mineral resources that are considered too speculative geologically to have economic considerations applied to them that would enable them to be categorized as mineral reserves. The study is preliminary in nature and there is no assurance the mining, metal production or cash flow scenarios outlined in this report would ever be realized. Mineral resources are not mineral reserves and do not have demonstrated economic viability.

This presentation uses the terms “measured”, “indicated” and “inferred” resources. We advise U.S. investors that while those terms are recognized and required by Canadian regulations, the U.S. Securities and Exchange Commission does not recognize them. U.S. investors are cautioned not to assume that any part or all of mineral deposits in these categories would ever be converted to reserves.

This presentation contains “forward-looking statements”. Such forward-looking statements involve a number of known and unknown risks, uncertainties and other factors which may cause the actual results, performance or achievements of the company’s plans to materially differ from any future results, performance or achievements expended or implied to such forward-looking statements. Known risks include, but are not limited to, financing risks, commodity price risks, scheduling risks and engineering risks. Readers are cautioned not to place undue reliance on these forward-looking statements, which speak only as of the date the statements were made, and readers are advised to consider such forward-looking statements in light of the risks set forth in the companies continuous disclosure filings as found at www.sedar.com.

The information contained in this presentation has been reviewed by David Yeager, P.Geo., a Qualified Person.

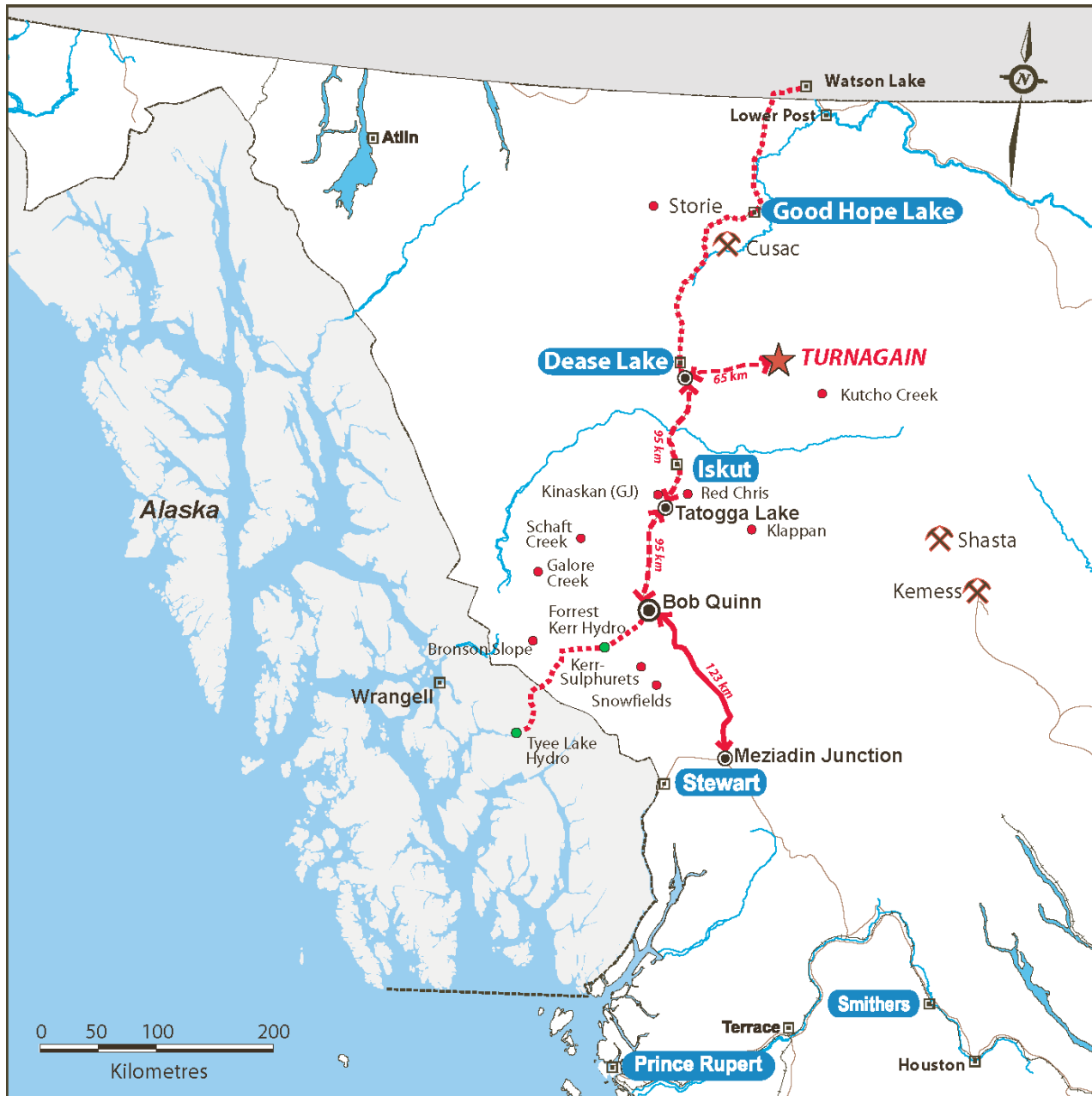


Mining Friendly Location



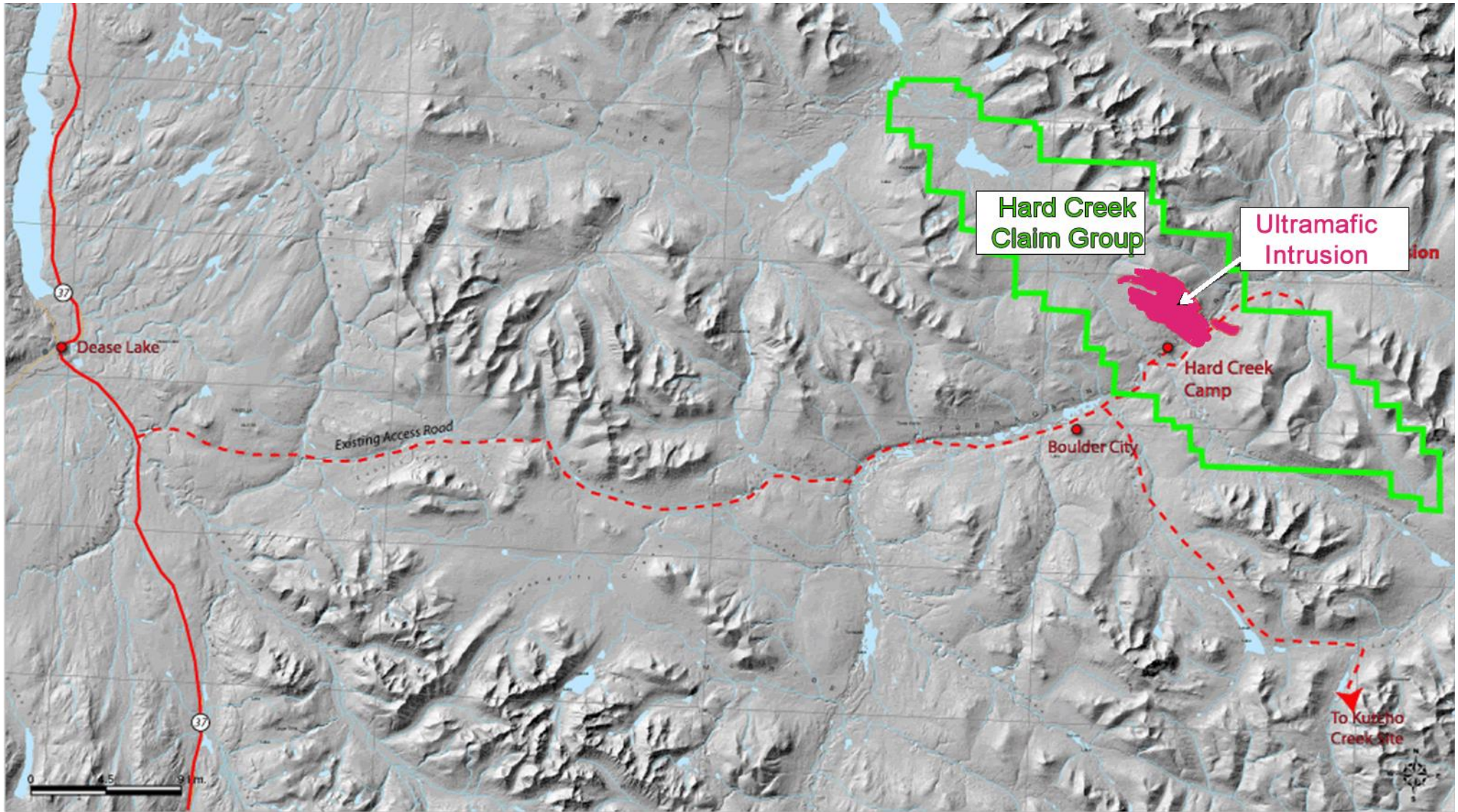
Turnagain
Project

Northwest British Columbia

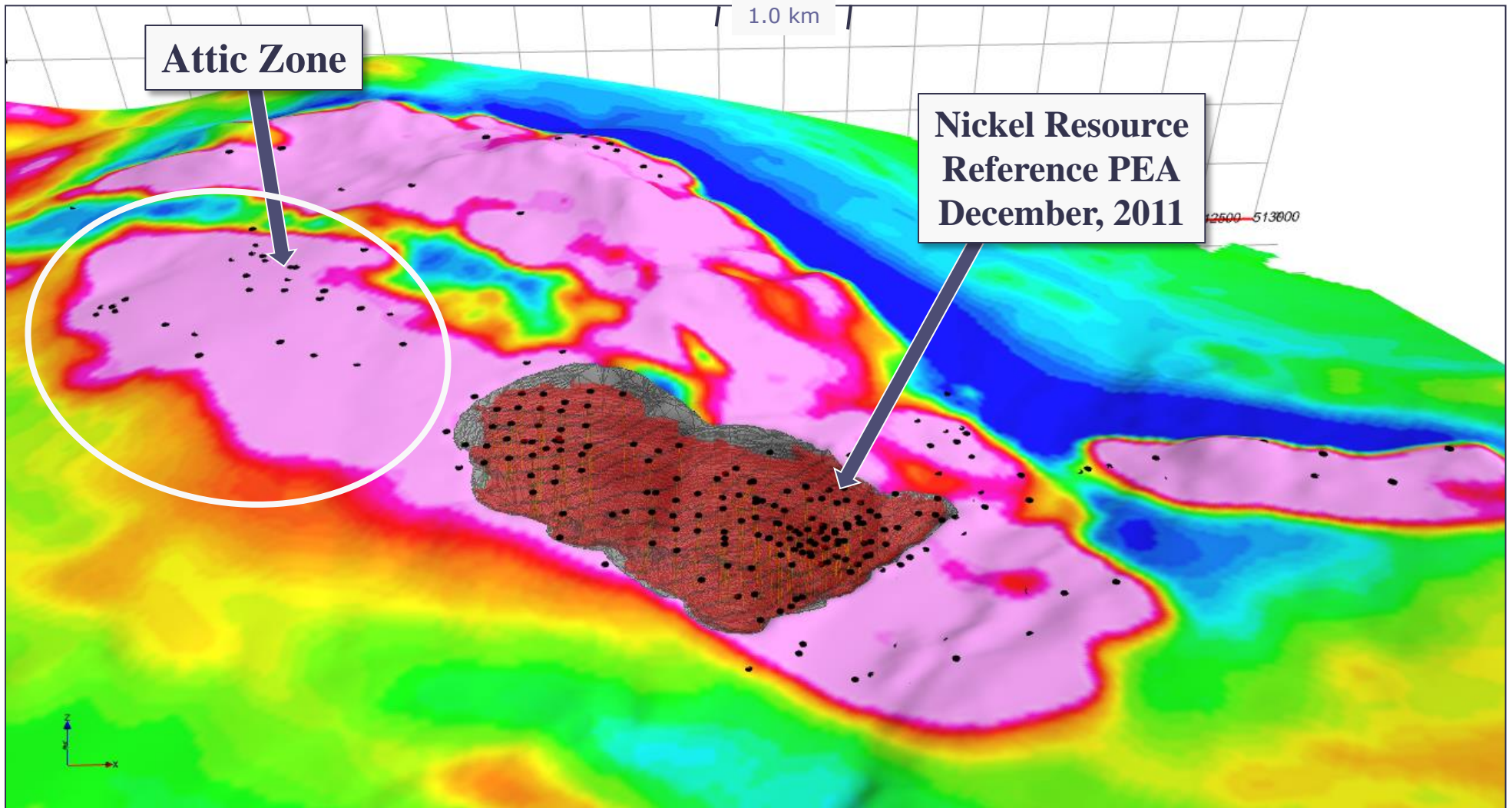


- **Roads**
(pavement to Dease Lake)
- **Power**
(Extending to Bob Quinn 2014)
- **Port**
(Stewart - shipping concentrate)

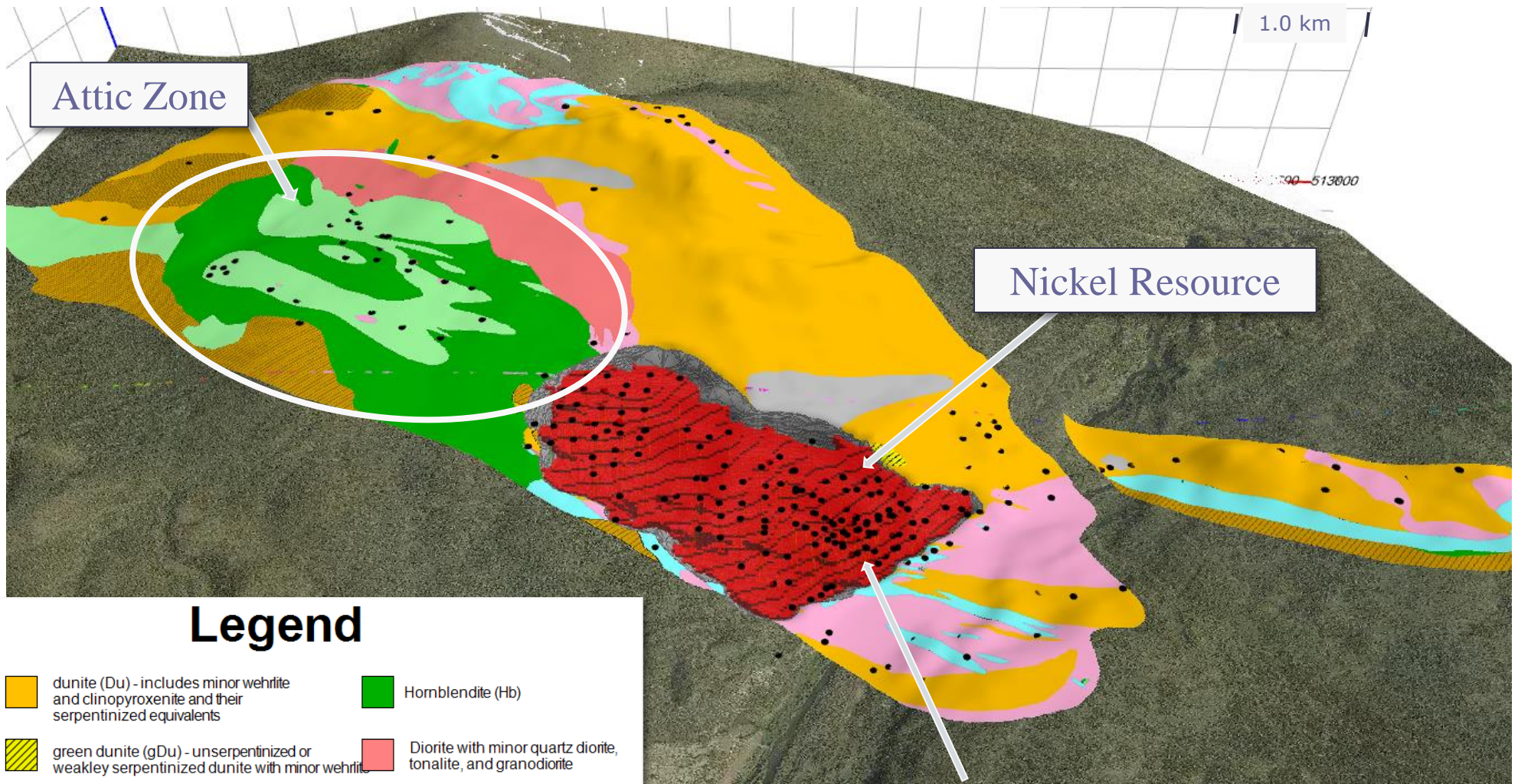
Local Access



Turnagain Airborne Mag Survey draped over Topography



Turnagain Ultramafic Geology



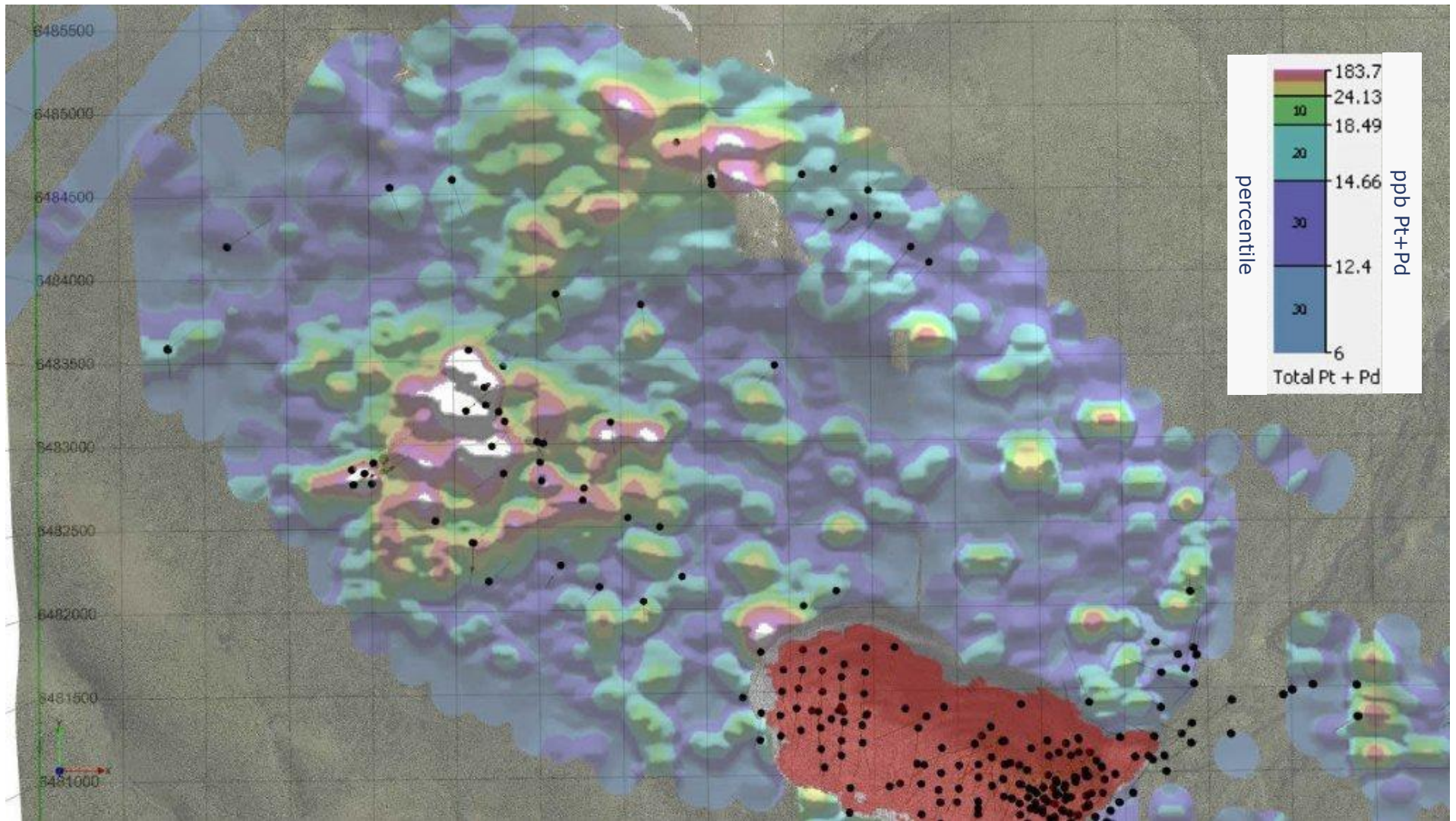
Legend

- | | |
|---|---|
| dunite (Du) - includes minor wehrlite and clinopyroxenite and their serpentinized equivalents | Hornblendite (Hb) |
| green dunite (gDu) - unserpentinized or weakly serpentinized dunite with minor wehrlite | Diorite with minor quartz diorite, tonalite, and granodiorite |
| wehrlite (Wh) - includes serpentinized wehrlite (spWh) and minor dunite (Du) | phyllite (Phy) - usually contorted and graphitic, often pyritic |
| serpentinite (Sp) - serpentine-replaced dunite and/or wehrlite | volcanic wacke to tuffaceous phyllite |
| olivine clinopyroxenite (ocPx) - includes clinopyroxenite (cPx) and occasional hornblende clinopyroxenite (hbcPx) | hornfels (Hf) - hornfelsed phyllite, volcaniclastic units and banded micaceous hornfels |
| magnetite clinopyroxenite (mtcPx) and hornblende clinopyroxenite (hbcPx), undivided | Reverse Fault (inferred) |

Resource within proposed pit:

Measured	206 million tonnes, 0.231% Ni, 0.014% Co
Indicated	356 million tonnes, 0.226% Ni, 0.013% Co
Inferred	201 million tonnes, 0.235% Ni, 0.013% Co

Pt + Pd Soil Geochem Anomalies



Attic Zone

Genesis Theory:

- Paleo-roof sub-chamber in Turnagain ultramafic
- Late water-rich pulse of pyroxene-rich magma in direct contact with sulfur rich wall rock

Importance:

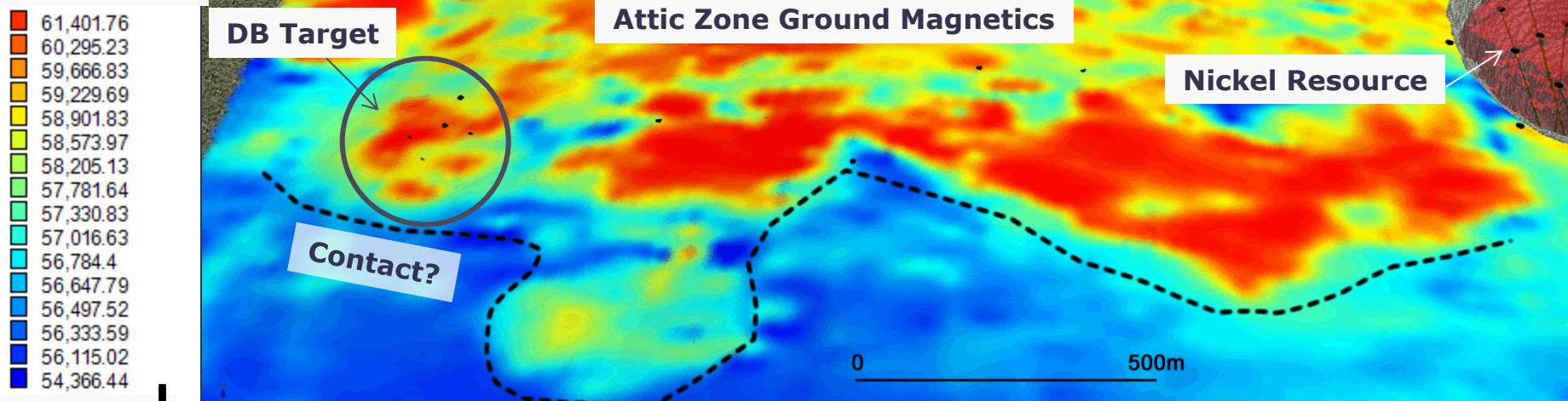
- Later magma pulse has higher concentration of Cu and PGEs
- Abundant sulfur available for sulphide development with anomalous arsenic and antimony
- Contact appears to be in place – not displaced by large fault

Targets

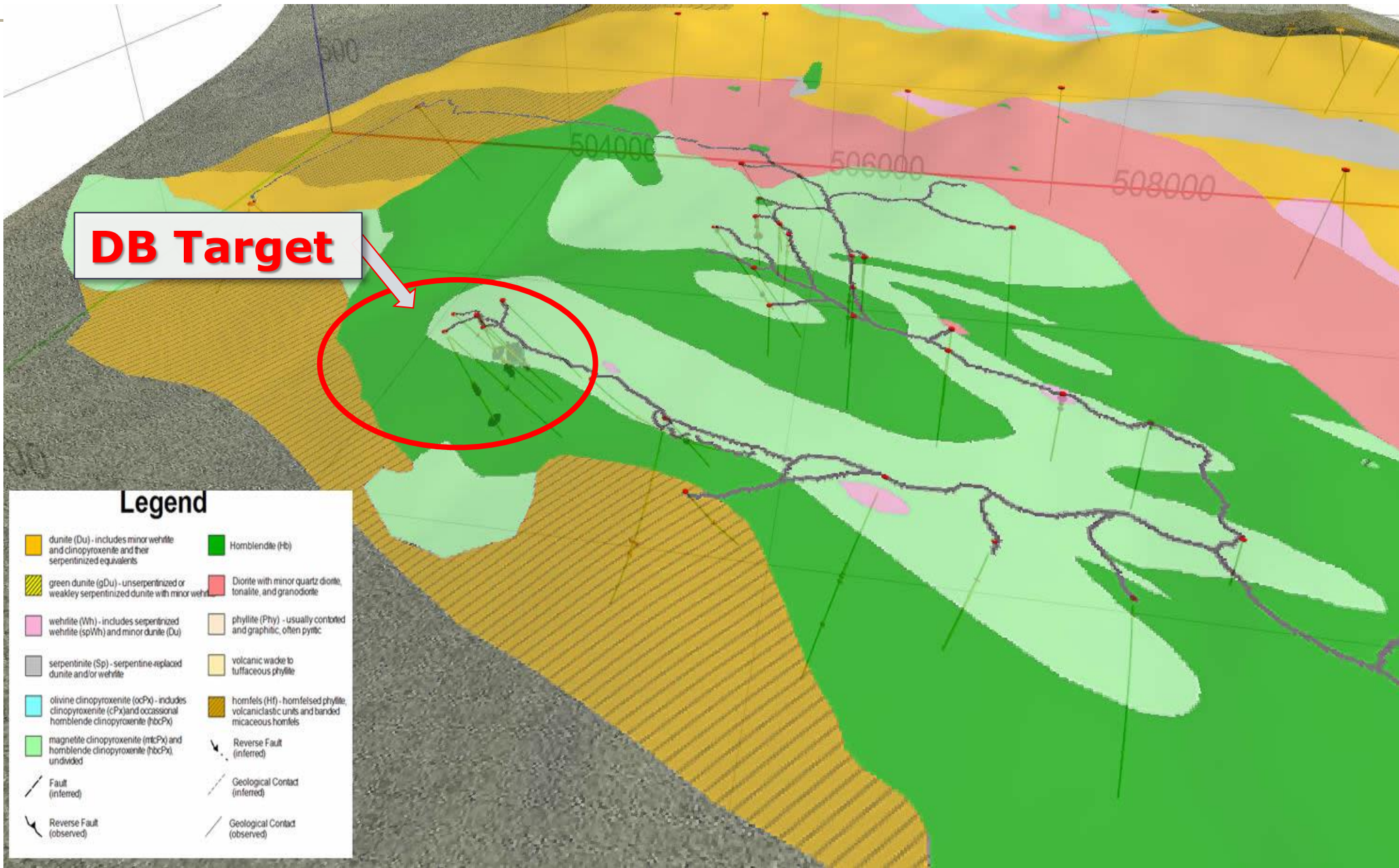
Contact between sub-chamber roof/ walls and host rock

Areas of abundant sulphur and/or Structural features near contact where late intrusions and/or hydrothermal fluids could concentrate PGEs

Ground Magnetics

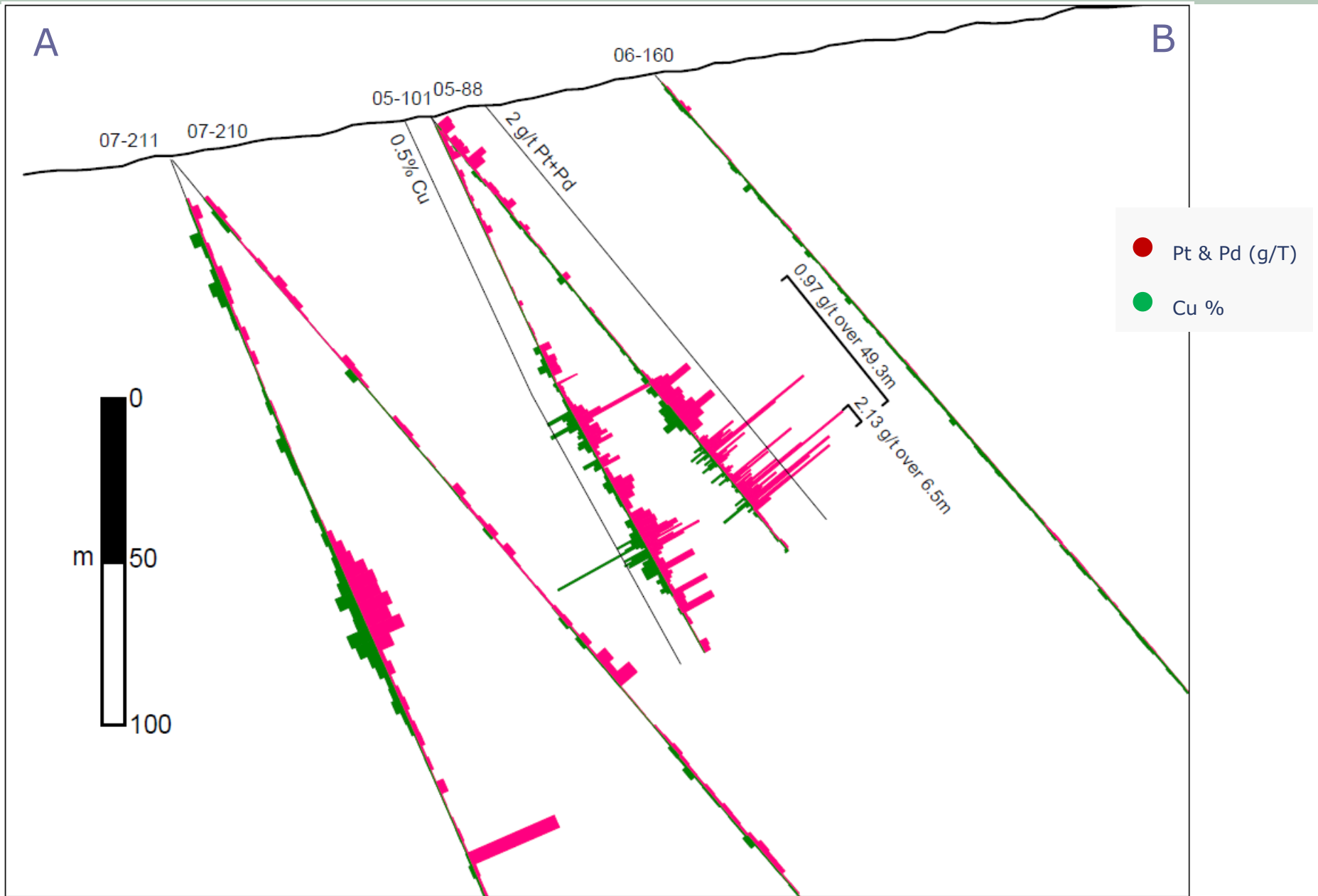


Attic Zone Geology

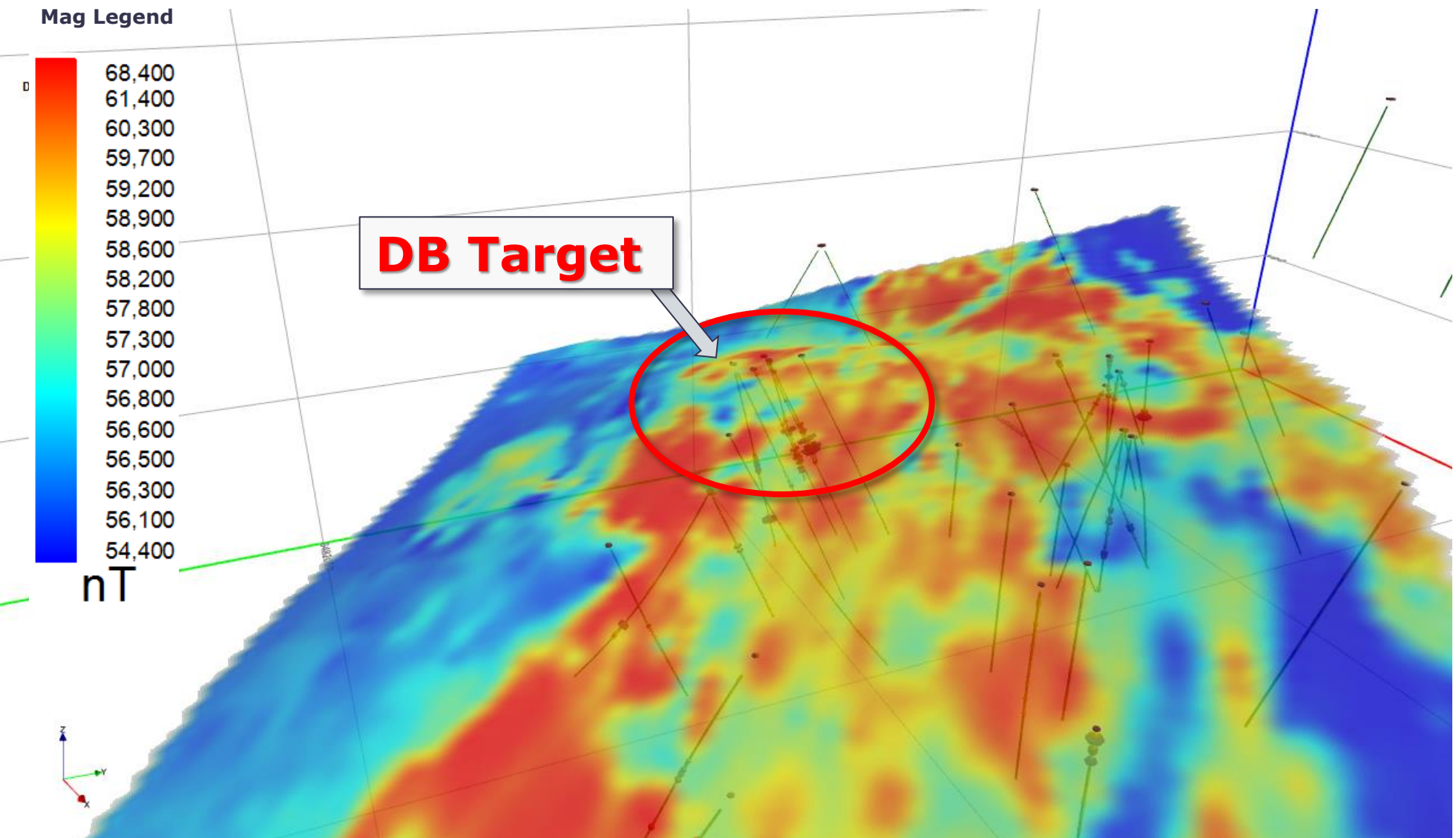


DB Cross Section

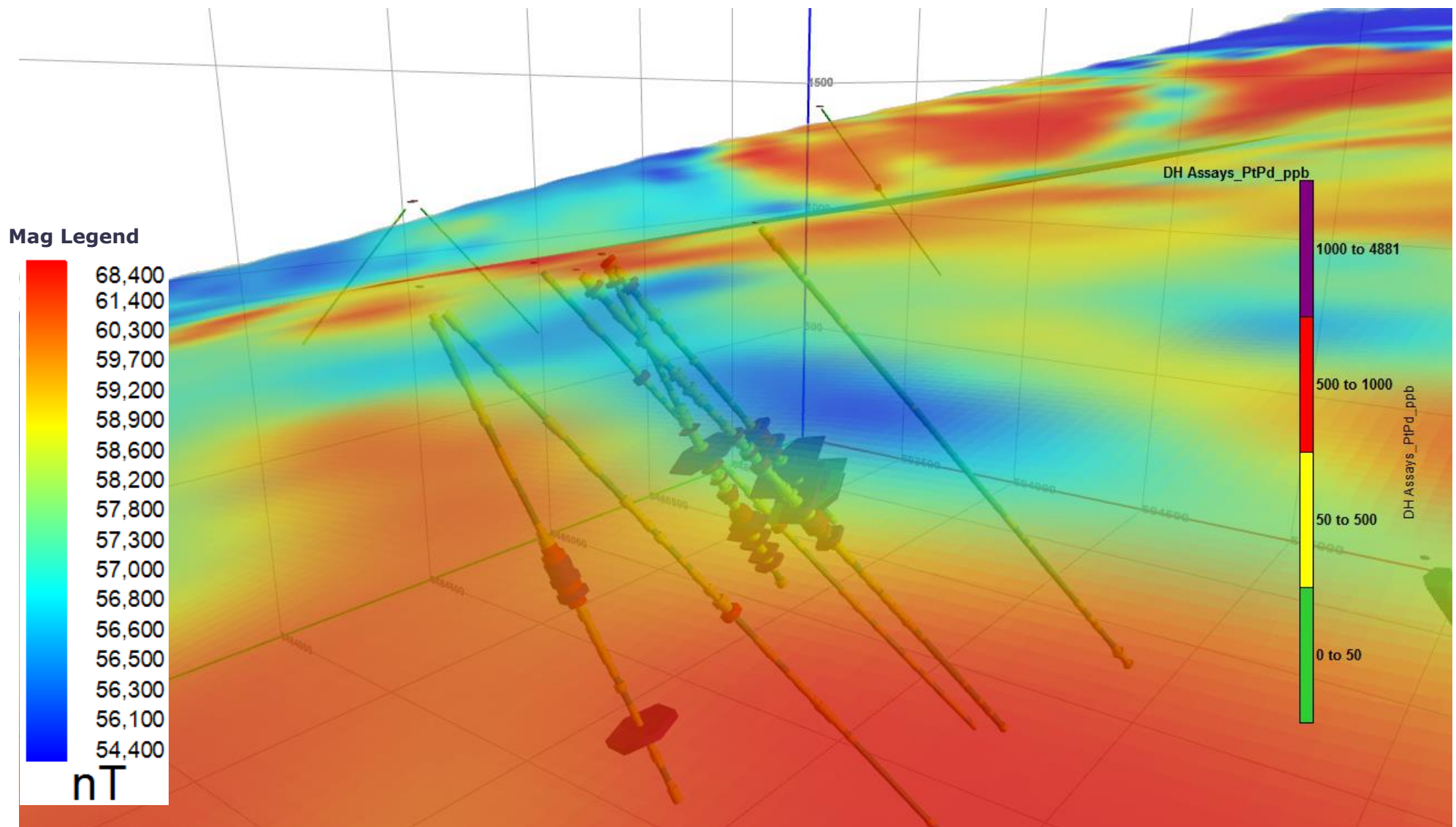
Attic Zone



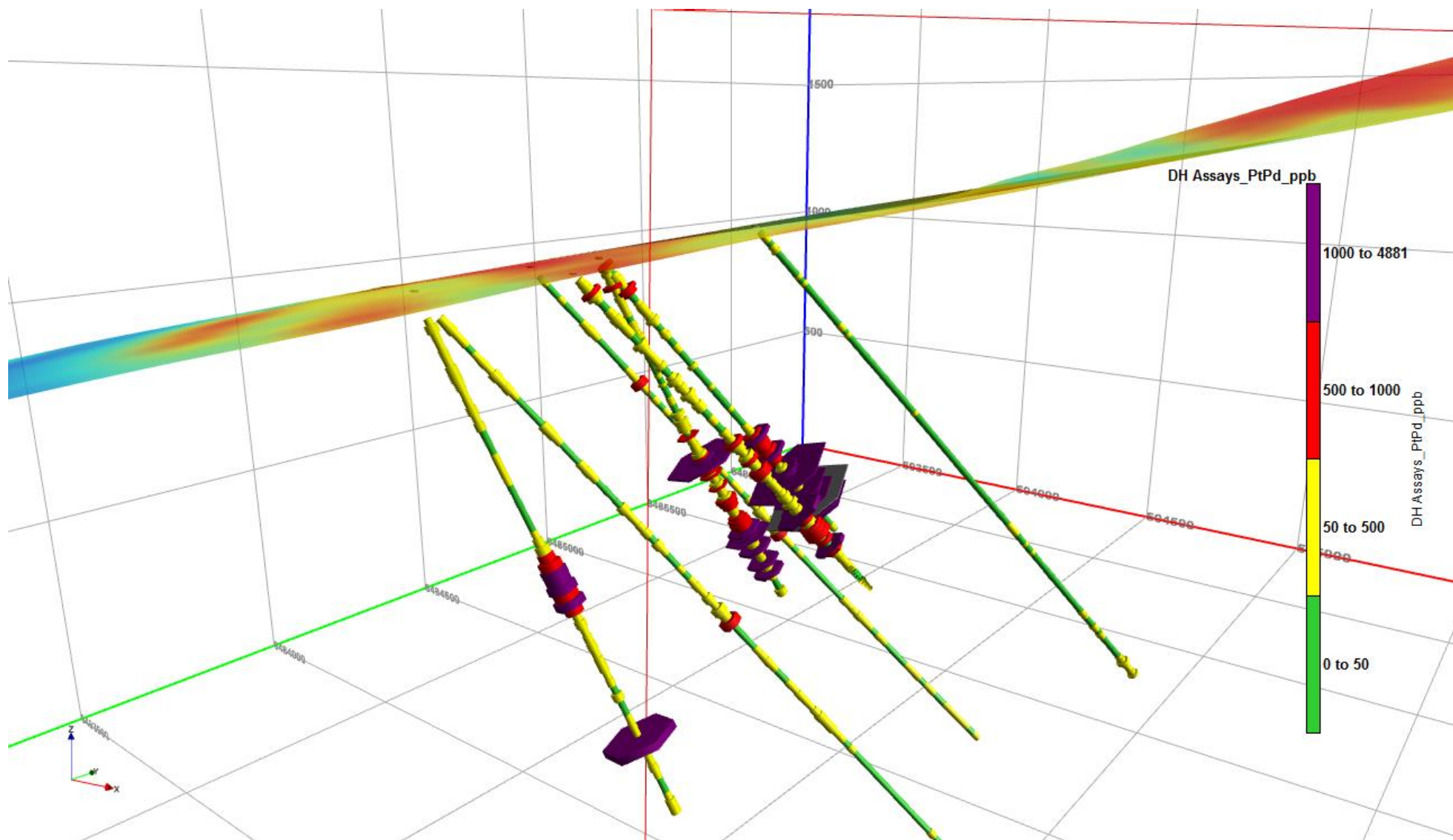
Ground Mag Survey over Attic Zone



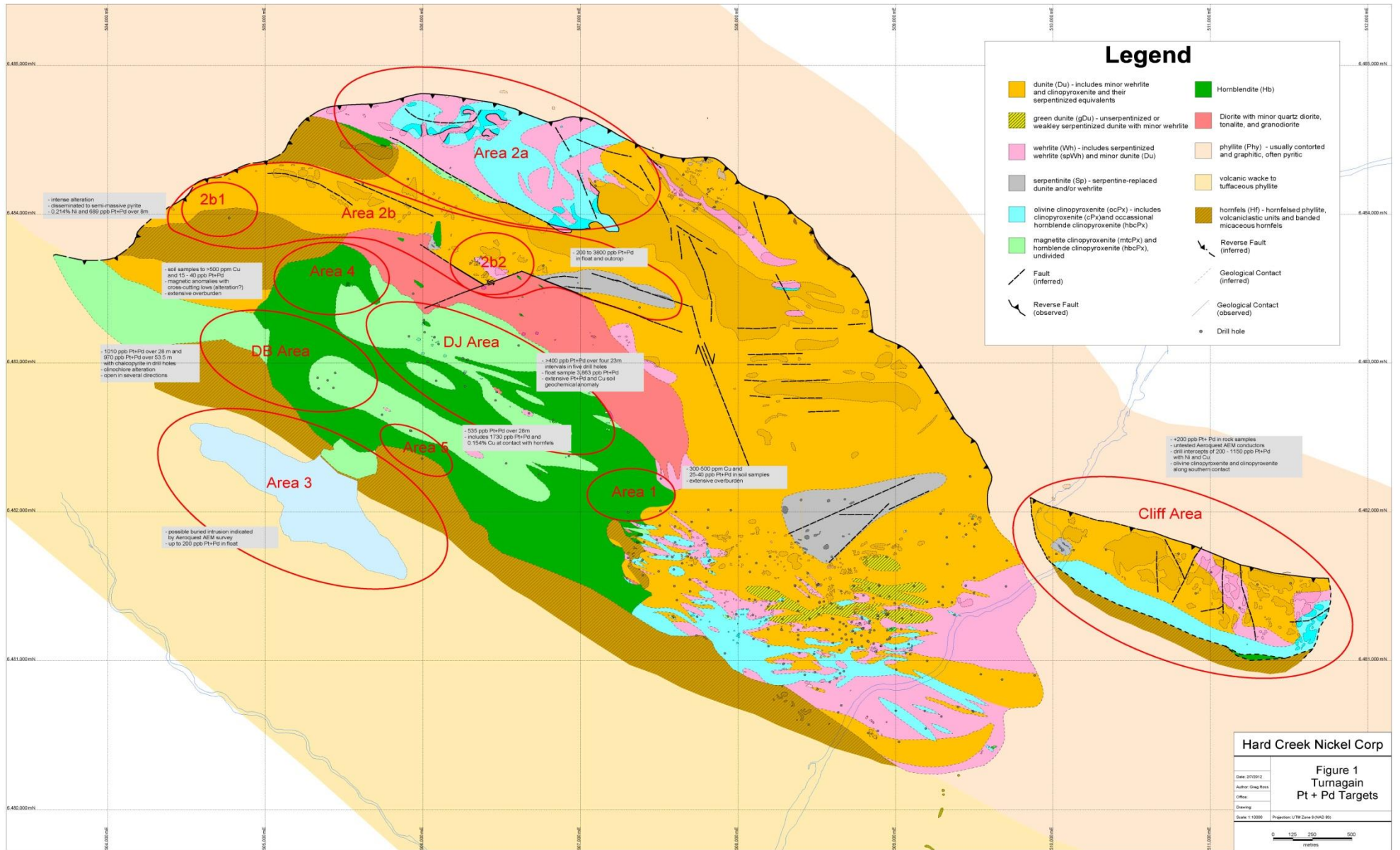
DB Zone Drill Holes: Pt + Pd



DB Zone Drill Holes: Pt + Pd



Pt/Pd Target Areas



AeroMag Survey

